

# Socio-economic Profile for Northern Ontario

Prepared for:  
FedNor/Industry Canada



Statistics Canada  
Central Region  
June 2015



Statistics  
Canada

Statistique  
Canada

Canada

# TABLE OF CONTENTS

Introduction	4
Geography Note	5
Executive Summary	6-8
<b>DEMOGRAPHIC PROFILE</b>	
Population Change	9
Population by Age Groups	9
Migration	10-21
Census Families	22
Private Households	22-23
Census Family Status	23
<b>ETHNOCULTURAL PROFILE</b>	
Aboriginal Identity	24
Visible Minority Groups	24
Ethnic Origin	25
Mother Tongue	26
Language Spoken Most Often at Home	27
First Official Language Spoken	27
Place of Birth	28
Generation Status	29
<b>EDUCATION PROFILE</b>	
Highest Level of Schooling	30
Major Field of Study	31

# TABLE OF CONTENTS CONT'D

## LABOUR PROFILE

Labour Force Activity	32
Class of Worker	33
Labour Force Population	33
Place of Work	34
Labour Force by Industry	34
Labour Force by Occupation	35

## INCOME PROFILE

Income of Individuals	36
Income of Economic Families	37
Prevalence of Low Income	38
Income of Households	39
Median Employment Income of Individuals	40
Employment Income as a Percentage of Total Income	41
Self-employment Income as a Percentage of Employment Income	42
Economic Dependency Ratio: Social Assistance	43
Economic Dependency Ratio: Employment Insurance	44

## INDUSTRY PROFILE

Location Counts, Total Business Locations	45
Location Counts, Small Business Locations	45
Location Counts, Medium Business Locations	46
Location Counts, Large Business Locations	46

## APPENDICES

Appendix A - Census	47-48
Appendix B - National Household Survey	49-52
Appendix C - Small Business and Administrative Data (SAAD)	53
Appendix D - Canadian Business Patterns	54

# INTRODUCTION

Presented within this document are statistical tables and charts on the demographics, economic activities and social characteristics of the area serviced by FedNor in Ontario. The data was prepared for FedNor/Industry Canada by Statistics Canada to assist FedNor in their economic development activities.

Three sources were used to construct the Socio-economic Profile. Data from the 2011 Census of Population and 2011 National Household Survey provides information on a variety of socio-economic topics including demographics, labour, and income while data from the 2001 and 2006 Censuses of Population are included to provide historical comparisons where appropriate. Additional details are provided by the inclusion of data on migration, and income from the Small Area and Administrative Data Division. Data adapted from the Canadian Business Patterns publication provides counts of active business locations by industry and employee size range. The most recent statistics available from each source during profile construction are presented.

Appendices included at the end of the profile provide information on the concepts and variables presented in this document. For additional information, please consult the Statistics Canada website at [www.statcan.gc.ca](http://www.statcan.gc.ca).

# Northern Ontario

GNR = 32.0 %

For this report, all data from the 2011 Census, National Household Survey, Taxfiler data and Canadian Business Patterns has been produced based upon an aggregation of census divisions as specified by FedNor.

For more information on the geographic terms used, please see Statistics Canada Illustrated Glossary at:

<http://www.statcan.gc.ca/pub/92-195-x/92-195-x2011001-eng.htm>

List of Census Divisions:

1. Muskoka District Municipality
2. Nipissing District
3. Parry Sound District
4. Manitoulin District
5. Sudbury District
6. Greater Sudbury Census Division
7. Timiskaming District
8. Cochrane District
9. Algoma District
10. Thunder Bay District
11. Rainy River District
12. Kenora District

# Executive Summary

## Demography

The population of Northern Ontario decreased by 10,628 people to 833,225 between 2006 and 2011. This represents an overall change of -1.3% during this time period. Children aged 0-14 decreased by 10.0% between 2006 and 2011, while the senior population aged 65 and over increased by 8.8%. The working age population (aged 25-64) comprised 54.3% of the total population in 2011.

With reference to migration, of the twelve Census Divisions in Northern Ontario, nine experienced a net out-migration between 2006-2007 and 2010-2011. The remaining three Census Divisions: Manitoulin District, Parry Sound District, and Muskoka District Municipality, all experienced a net in-migration during the same time period.

The 2011 Census counted 245,395 census families in private households in Northern Ontario, a decrease from 247,960 in 2006. In 2011, lone-parent families accounted for 16.5% of all census families in the area, compared to 16.7% for Ontario.

## Ethno-cultural

In 2011, 76.9% of respondents reported English, 15.7% reported French and 7.4% reported a non-official language as their mother tongue among those providing a single response in Northern Ontario.

In Northern Ontario, English was reported as the language spoken most often at home by 87.1% of respondents, while French was reported by 9.2% and non-official languages were reported by 2.2% of respondents.

The Aboriginal Identity population comprised 12.4% of the total population of Northern Ontario, which is higher than 2.4% reported for Ontario as a whole.

Within the area of Northern Ontario 1.9% of the population was a member of a visible minority group in 2011.

6.2% of the population of Northern Ontario are immigrants. 0.4% of the population are recent immigrants, and the most common place of birth reported for this group was Asia.

# Executive Summary Continued

## Education

In Northern Ontario in 2011, 50.3% of the population aged 15 years and over reported having a postsecondary certificate, diploma or degree. 45.7% reported having a college, CEGEP or other non-university certificate or diploma as their highest certificate, diploma or degree, while 22.4% have an apprenticeship or trade certificate or diploma and 27% reported having a university certificate, diploma or degree at bachelor level or above. In comparison, the proportions for Ontario were 36.2% for a college, CEGEP, or other non-university diploma or certificate, 13.5% for an apprenticeship or trades certificate or diploma and 42.8% for a university certificate, diploma or degree at bachelor level or above.

Among the population 15 years and over with post-secondary qualifications in the area, the two most common fields of study for males were Architecture, engineering, and related technologies (84,265); and Business, management and public administration (18,445). For females, the two most common fields of study were Health and related fields (50,730); and Business, management and public administration (43,230).

## Labour

According to the 2011 National Household Survey, the labour force participation rate for the population 15 years and over was 60.5% for Northern Ontario as compared to 65.5% for Ontario overall. The employment rate for Northern Ontario was 54.9% and the unemployment rate was 9.2%, compared to the employment rate of 60.1% and unemployment rate of 8.3% for Ontario. Among the population 15 years of age and over in the labour force in Northern Ontario, 8.4% were self-employed. This is lower than the proportion of 10.6% in the whole of the province of Ontario.

In 2011, “Health care and social assistance” and “Retail Trade” were the most commonly reported industries by those in the labour force in Northern Ontario. In Ontario, the most commonly reported industries were “Retail Trade” and “Manufacturing”.

The most commonly reported occupational groups in Northern Ontario were “Sales and service occupations” and “Trades, transport and equipment operators and related occupations”.

## Income

According to the National Household Survey, in 2010 the median before-tax income for males in Northern Ontario was \$37,291, which was higher than the provincial median of \$36,971. Within the area of Northern Ontario, the median before-tax income for females was \$24,008, which was lower than the median income of \$25,412 for Ontario.

# Executive Summary Continued

## Income continued

In Northern Ontario, the median before-tax household income for all private households in 2010 was \$57,940, compared to \$66,358 for Ontario. The median after-tax household income in the area was \$51,982 in 2010 compared to \$58,717 in Ontario.

The prevalence of low income, measured using the after-tax low income measure, among males in private households in Northern Ontario was 12.4% in 2010 which is lower than the rate of 13.2% in Ontario. The number of males in low income (48,150) was lower than the number of females (57,680) and represented a lower percentage of the population living in low income within the area. In Ontario the prevalence of low income, measured using the after-tax low income measure, among females in private households was 14.5% in 2010 which is comparable to the rate of 14.5% in Northern Ontario.

Self-employment Income as a percentage of Employment Income changed from 5.9% in 2005 to 4.7% in 2010. For Ontario, the rate went from 7.6% in 2005 to 7.0% in 2010.

In Northern Ontario, the “Economic Dependency Ratio: Social Assistance” went from 2.3 in 2005 to 2.5 in 2010 while the provincial rate for Ontario went from 1.3 to 1.5. The “Economic Dependency Ratio: Employment Insurance” increased from 2.2 in 2005 to 3.1 in 2010 in Northern Ontario. In comparison, the Ontario rate went from 1.4 in 2005 to 2.0 in 2010.

## Industry

In Northern Ontario the most common industry to which business locations were classified in 2012 was Construction, accounting for 6,386 of the 47,905 total locations. In Ontario it was Professional, Scientific and Technical Services.

In 2012 there were 25,735 small sized business locations in Northern Ontario. In this area, the top three industries for this category of business location were: Retail Trade (4,285), Construction (3,425), and Other Services (except public administration) (2,609). In comparison, the top three industries in Ontario were: Retail Trade (50,630), Professional, scientific and technical services (50,371) and Other Services (except public administration) (41,460).

There were 478 medium sized business locations in Northern Ontario in 2012. The top industries for this location category were: Health Care and Social Assistance (103), Retail Trade (89), Public Administration (51). In Ontario, the top three industries were: Manufacturing (1,367), Retail Trade (1,278), and Health Care and Social Assistance (825).

There were 58 large sized business locations in Northern Ontario in 2012. In this area the top industries for this location category were: Educational Services (23), Manufacturing (10), and Health Care and Social Assistance (10). In Ontario, the top three industries in this category were: Health Care and Social Assistance (137), Manufacturing (136), and Public Administration (125).

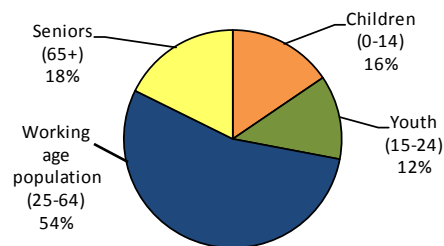


## Population by Age Group and Population Change - Northern Ontario

	2001	2006	2011	% Change 2001-2006	% Change 2006-2011
<b>Total</b>	839,549	843,853	<b>833,225</b>	0.5	-1.3
<b>Children (0-14)</b>	159,295	143,475	<b>129,145</b>	-9.9	-10.0
<b>Youth (15-24)</b>	108,655	109,230	<b>104,045</b>	0.5	-4.7
<b>Working age population (25-64)</b>	448,780	455,520	<b>452,605</b>	1.5	-0.6
<b>Seniors (65+)</b>	122,775	135,580	<b>147,445</b>	10.4	8.8

## Population by Age Group, 2011

Northern Ontario



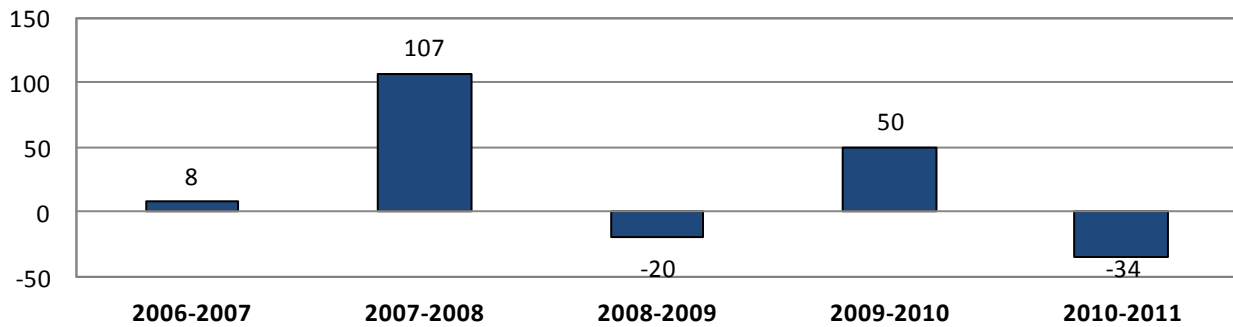
## Population by Age Group, 2011 - Northern Ontario

	Total		Male		Female	
	Number	%	Number	%	Number	%
<b>Total - Age</b>	833,225	100.0	410,375	100.0	422,845	100.0
<b>0-4</b>	41,265	5.0	21,065	5.1	20,200	4.8
<b>5-9</b>	41,220	4.9	21,030	5.1	20,190	4.8
<b>10-14</b>	46,660	5.6	24,015	5.9	22,645	5.4
<b>15-19</b>	54,035	6.5	27,725	6.8	26,310	6.2
<b>20-24</b>	50,010	6.0	25,445	6.2	24,565	5.8
<b>25-29</b>	45,215	5.4	22,490	5.5	22,725	5.4
<b>30-34</b>	44,000	5.3	21,530	5.2	22,465	5.3
<b>35-39</b>	46,675	5.6	22,965	5.6	23,705	5.6
<b>40-44</b>	52,320	6.3	25,690	6.3	26,630	6.3
<b>45-49</b>	67,140	8.1	33,015	8.0	34,120	8.1
<b>50-54</b>	71,905	8.6	35,475	8.6	36,430	8.6
<b>55-59</b>	65,520	7.9	32,520	7.9	33,000	7.8
<b>60-64</b>	59,830	7.2	30,020	7.3	29,810	7.0
<b>65-69</b>	44,840	5.4	22,165	5.4	22,675	5.4
<b>70-74</b>	35,835	4.3	17,150	4.2	18,685	4.4
<b>75-80</b>	28,520	3.4	13,365	3.3	15,150	3.6
<b>80-84</b>	20,770	2.5	9,050	2.2	11,715	2.8
<b>85+</b>	17,480	2.1	5,650	1.4	11,830	2.8
<b>Median age</b>	44.6	N/A	43.7	N/A	45.3	N/A

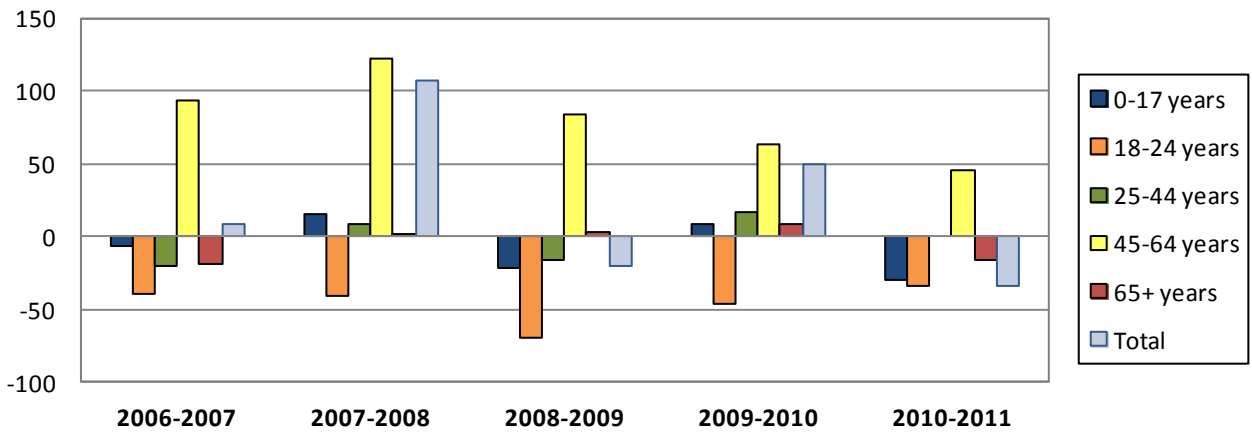
Source: Statistics Canada, special tabulations, unpublished data, 2001, 2006, and 2011 Censuses of Population

Migrants - Manitoulin District			
	In-Migrants	Out-Migrants	Net-Migrants
2006-2007	613	605	8
2007-2008	637	530	107
2008-2009	535	555	-20
2009-2010	589	539	50
2010-2011	480	514	-34
2006-2011	2,854	2,743	111

**Net-Migrants**  
Manitoulin District



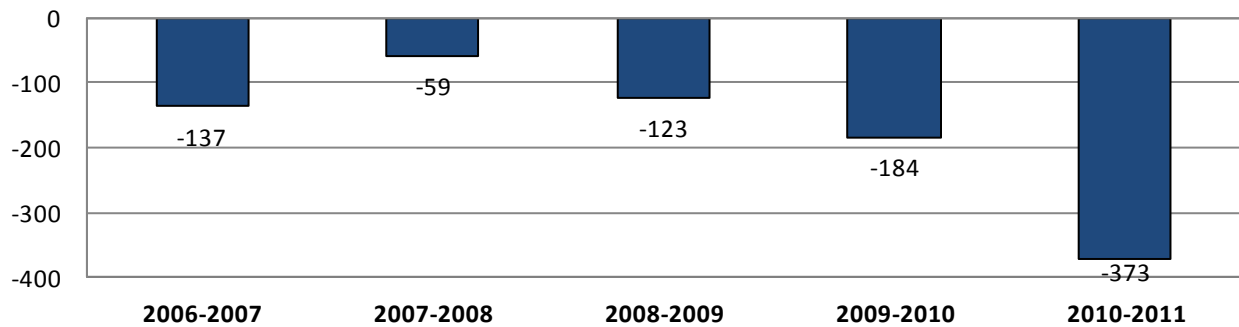
**Net-Migrants by Age Group**  
Manitoulin District



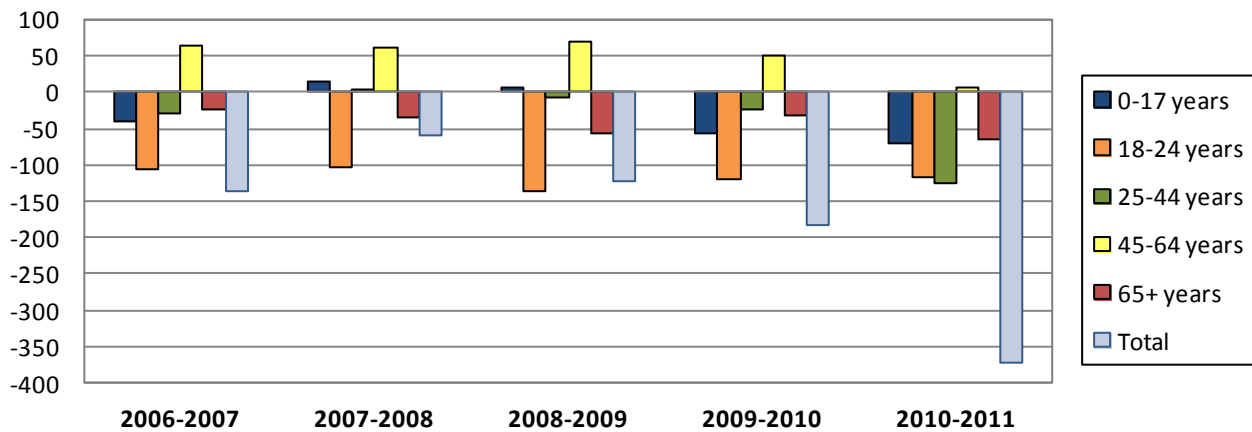
Source: Statistics Canada, Income Statistics Division, Migration Estimates by Census Division, 91C0025

Migrants - Sudbury District			
	In-Migrants	Out-Migrants	Net-Migrants
2006-2007	1,307	1,444	-137
2007-2008	1,321	1,380	-59
2008-2009	1,194	1,317	-123
2009-2010	1,076	1,260	-184
2010-2011	977	1,350	-373
2006-2011	5,875	6,751	-876

### Net-Migrants Sudbury District



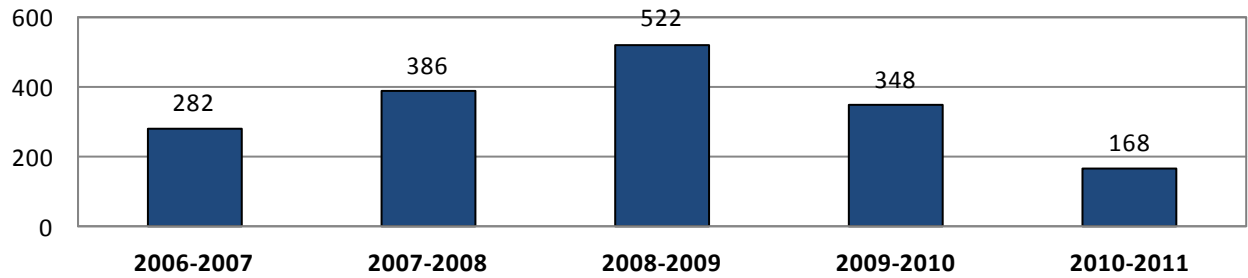
### Net-Migrants by Age Group Sudbury District



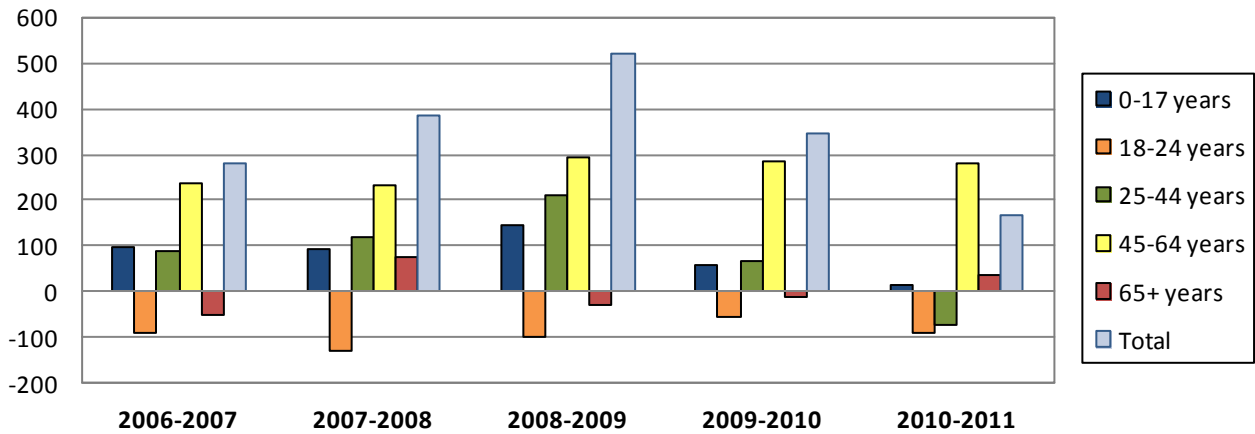
Source: Statistics Canada, Income Statistics Division, Migration Estimates by Census Division, 91C0025

Migrants - Muskoka District Municipality			
	In-Migrants	Out-Migrants	Net-Migrants
2006-2007	2,531	2,249	282
2007-2008	2,747	2,361	386
2008-2009	2,753	2,231	522
2009-2010	2,760	2,412	348
2010-2011	2,426	2,258	168
2006-2011	13,217	11,511	1,706

**Net-Migrants**  
Muskoka District Municipality



**Net-Migrants by Age Group**  
Muskoka District Municipality



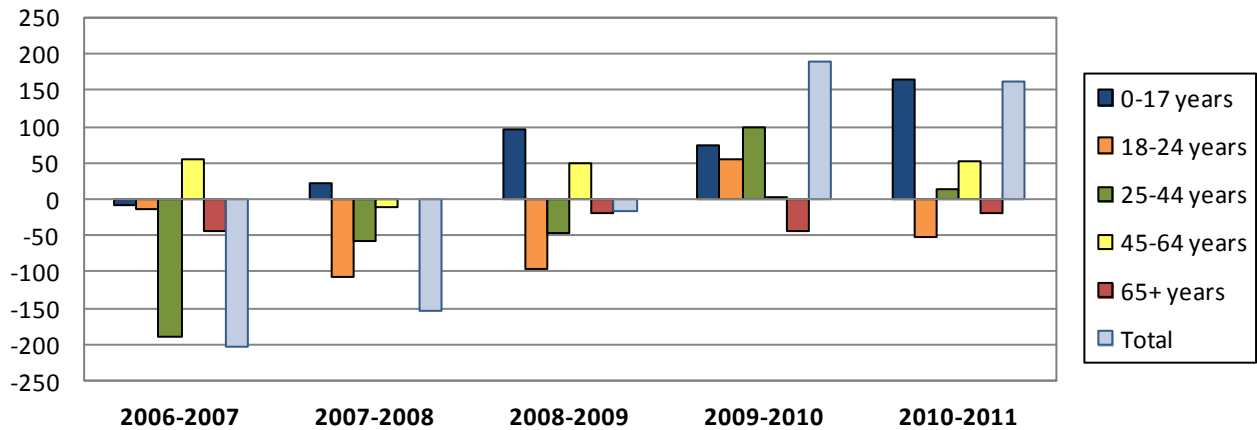
Source: Statistics Canada, Income Statistics Division, Migration Estimates by Census Division, 91C0025

Migrants - Nipissing District			
	In-Migrants	Out-Migrants	Net-Migrants
2006-2007	3,500	3,704	-204
2007-2008	3,763	3,917	-154
2008-2009	3,344	3,361	-17
2009-2010	3,451	3,263	188
2010-2011	3,484	3,322	162
2006-2011	17,542	17,567	-25

**Net-Migrants**  
Nipissing District



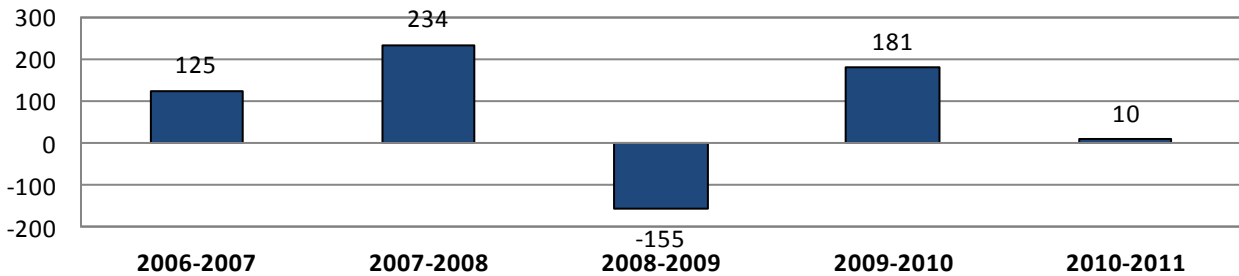
**Net-Migrants by Age Group**  
Nipissing District



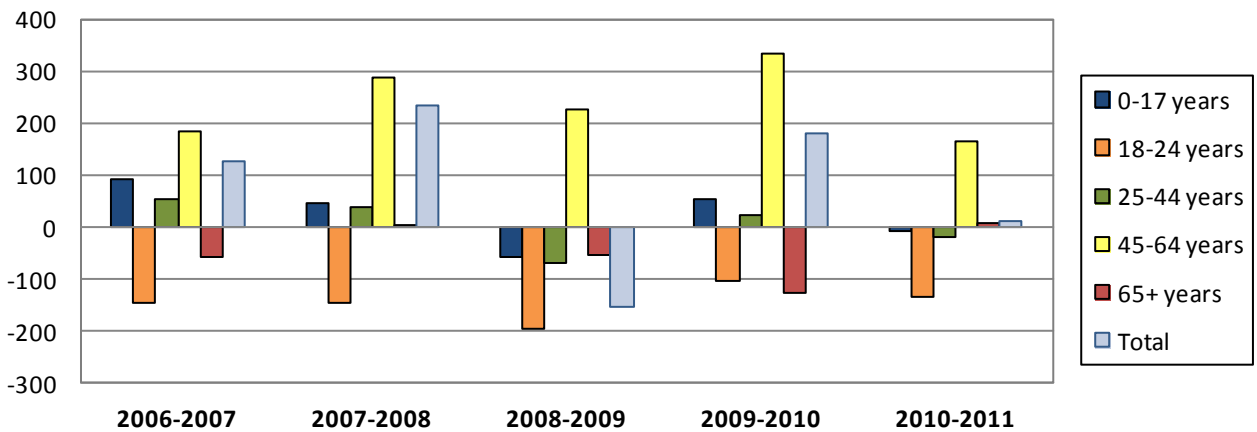
Source: Statistics Canada, Income Statistics Division, Migration Estimates by Census Division, 91C0025

Migrants - Parry Sound District			
	In-Migrants	Out-Migrants	Net-Migrants
2006-2007	2,171	2,046	125
2007-2008	2,278	2,044	234
2008-2009	1,992	2,147	-155
2009-2010	2,258	2,077	181
2010-2011	1,985	1,975	10
2006-2011	10,684	10,289	395

**Net-Migrants**  
Parry Sound District

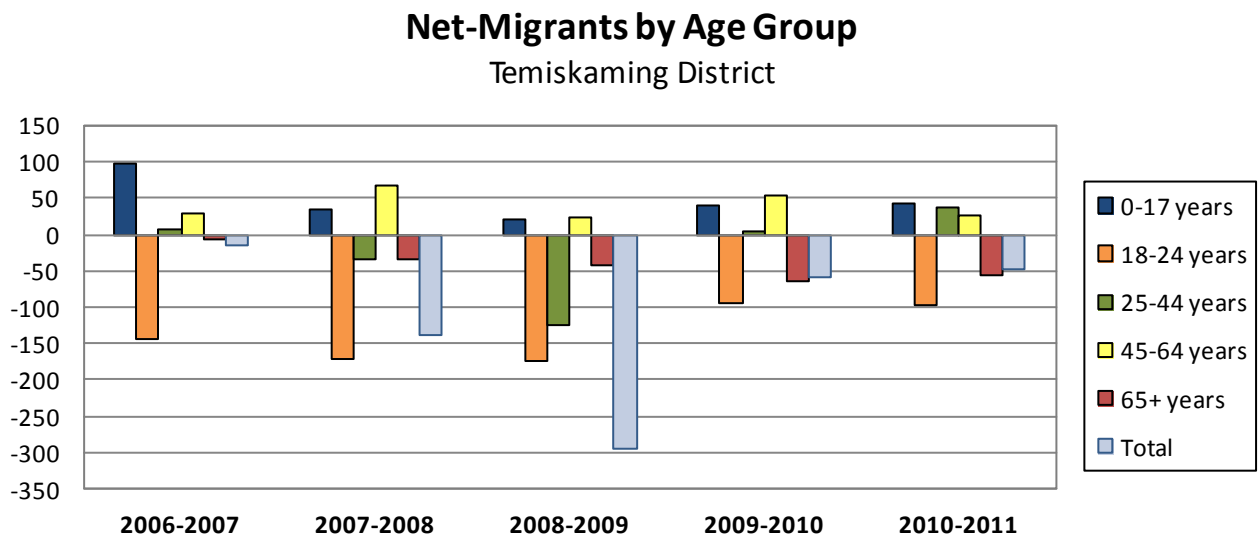
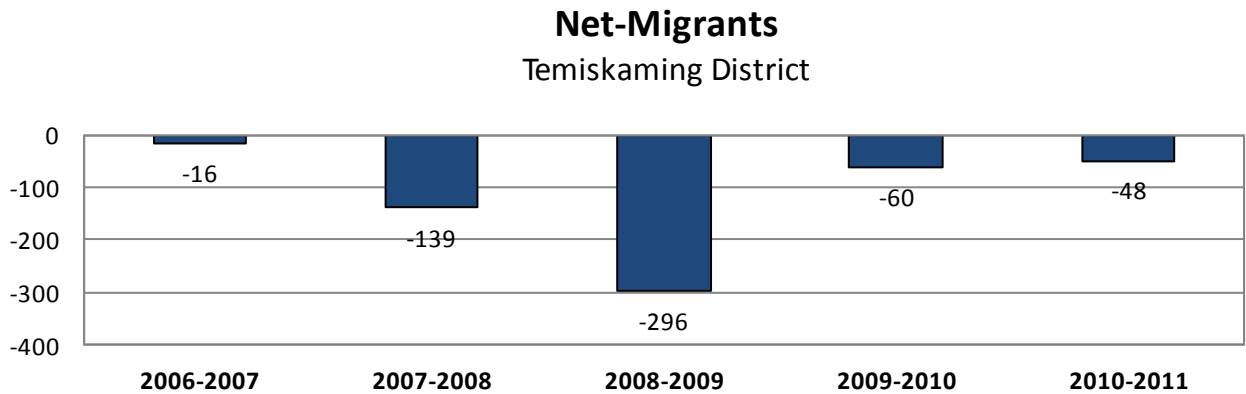


**Net-Migrants by Age Group**  
Parry Sound District



Source: Statistics Canada, Income Statistics Division, Migration Estimates by Census Division, 91C0025

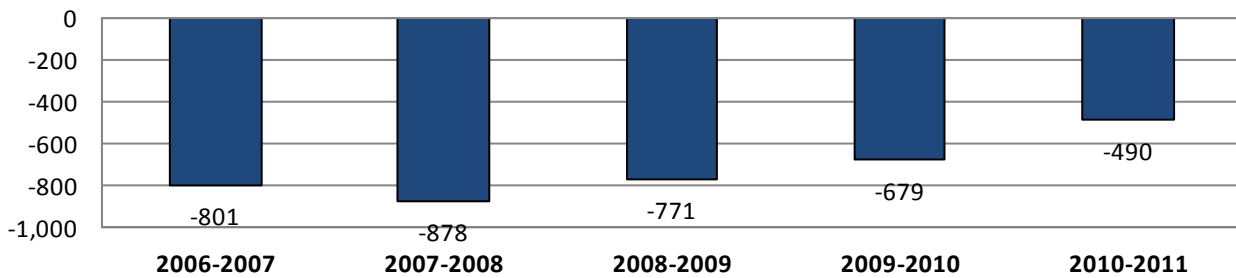
Migrants - Temiskaming District			
	In-Migrants	Out-Migrants	Net-Migrants
2006-2007	88	1,272	-16
2007-2008	72	1,310	-139
2008-2009	56	1,287	-296
2009-2010	65	1,148	-60
2010-2011	83	1,140	-48
2006-2011	364	6,157	-559



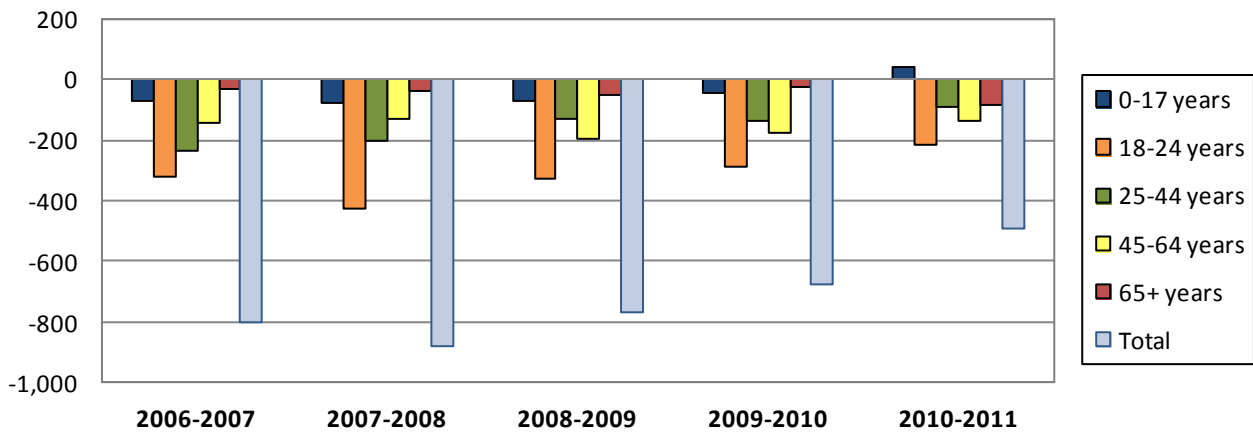
Source: Statistics Canada, Income Statistics Division, Migration Estimates by Census Division, 91C0025

Migrants - Cochrane District			
	In-Migrants	Out-Migrants	Net-Migrants
2006-2007	2,176	2,977	-801
2007-2008	2,118	2,996	-878
2008-2009	1,962	134	-771
2009-2010	1,946	128	-679
2010-2011	2,004	167	-490
2006-2011	10,206	709	-3,619

### Net-Migrants Cochrane District



### Net-Migrants by Age Group Cochrane District

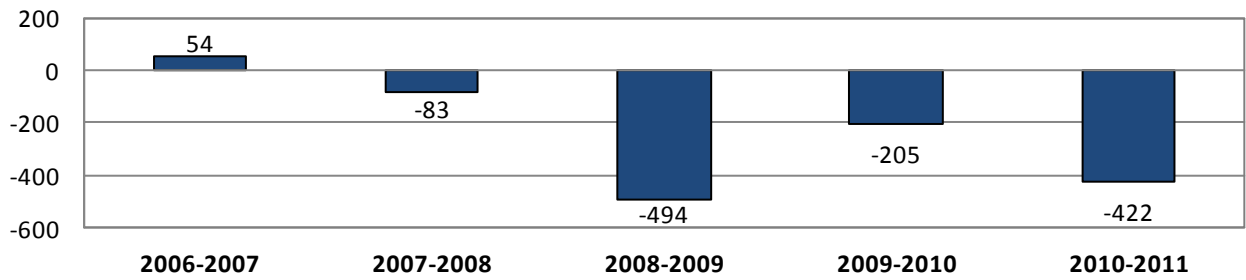


Source: Statistics Canada, Income Statistics Division, Migration Estimates by Census Division, 91C0025

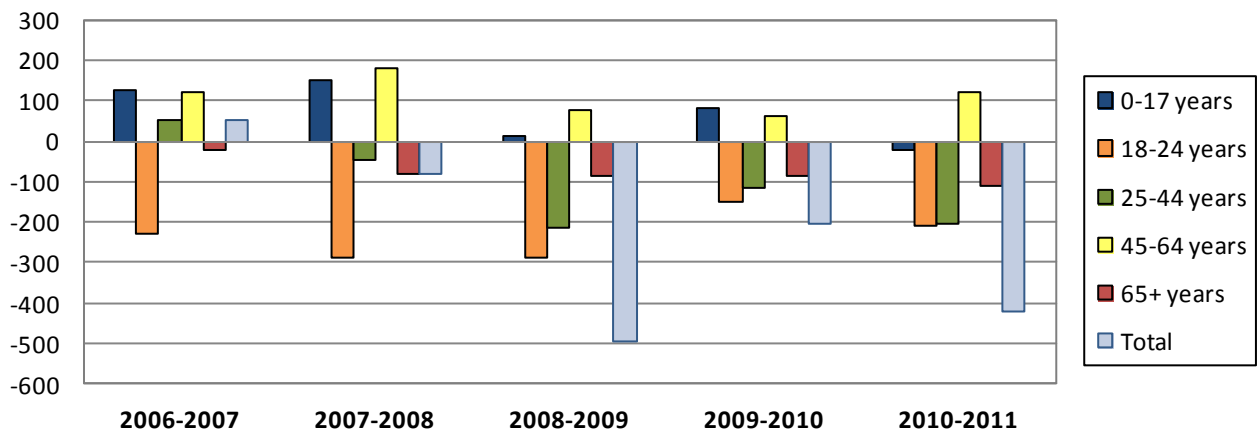


Migrants - Algoma District			
	In-Migrants	Out-Migrants	Net-Migrants
2006-2007	3,220	3,166	54
2007-2008	2,979	3,062	-83
2008-2009	2,647	3,141	-494
2009-2010	2,676	2,881	-205
2010-2011	2,438	2,860	-422
2006-2011	13,960	15,110	-1,150

### Net-Migrants Algoma District



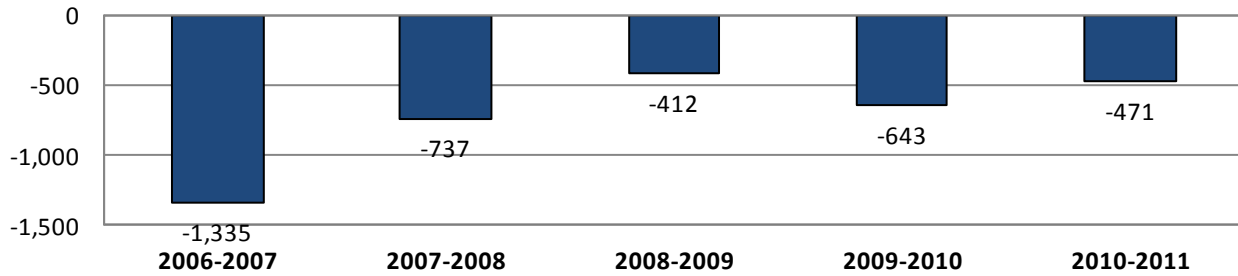
### Net-Migrants by Age Group Algoma District



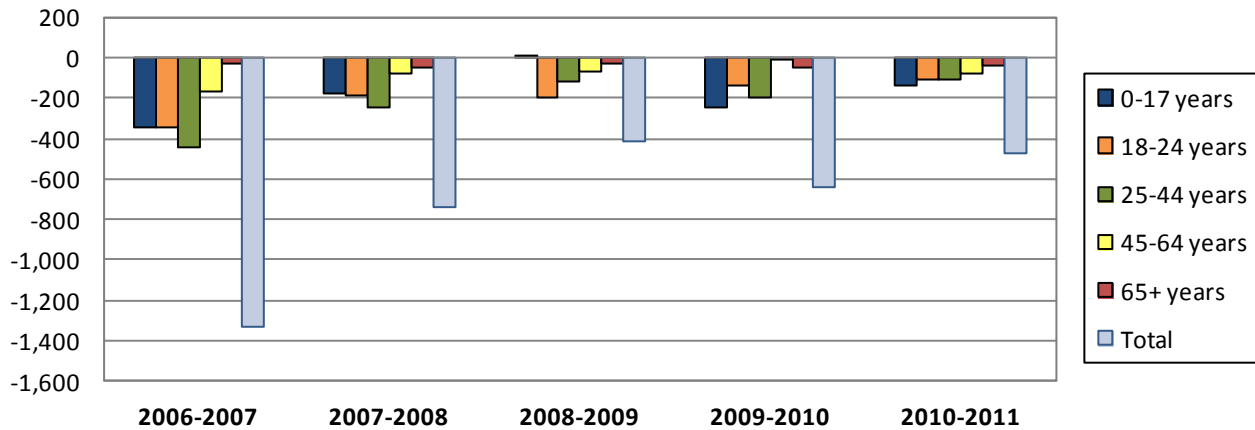
Source: Statistics Canada, Income Statistics Division, Migration Estimates by Census Division, 91C0025

Migrants - Kenora District			
	In-Migrants	Out-Migrants	Net-Migrants
2006-2007	1,691	3,026	-1,335
2007-2008	1,920	2,657	-737
2008-2009	1,951	2,363	-412
2009-2010	1,795	2,438	-643
2010-2011	1,756	2,227	-471
2006-2011	9,113	12,711	-3,598

### Net-Migrants Kenora District



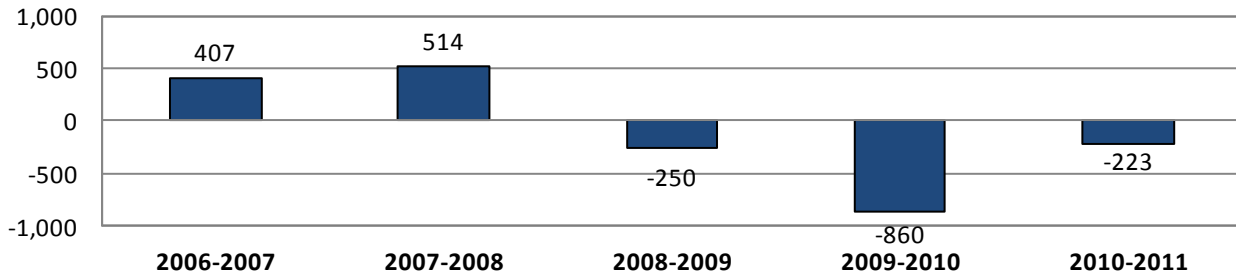
### Net-Migrants by Age Group Kenora District



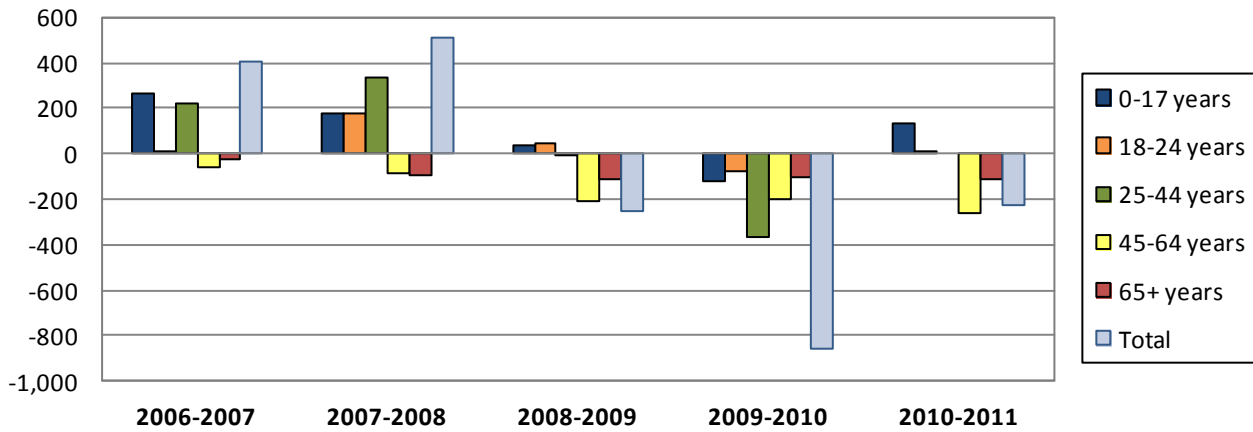
Source: Statistics Canada, Income Statistics Division, Migration Estimates by Census Division, 91C0025

Migrants - Greater Sudbury District			
	In-Migrants	Out-Migrants	Net-Migrants
2006-2007	5,106	4,699	407
2007-2008	5,308	4,794	514
2008-2009	4,458	4,708	-250
2009-2010	4,245	5,105	-860
2010-2011	4,354	4,577	-223
2006-2011	23,471	23,883	-412

**Net-Migrants**  
Greater Sudbury District



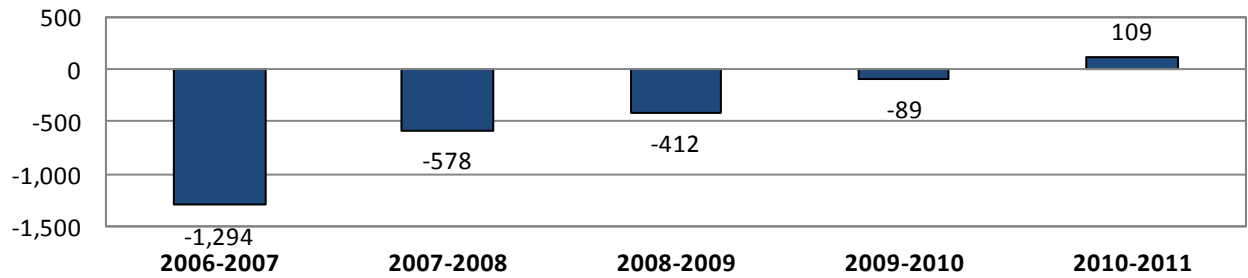
**Net-Migrants by Age Group**  
Greater Sudbury District



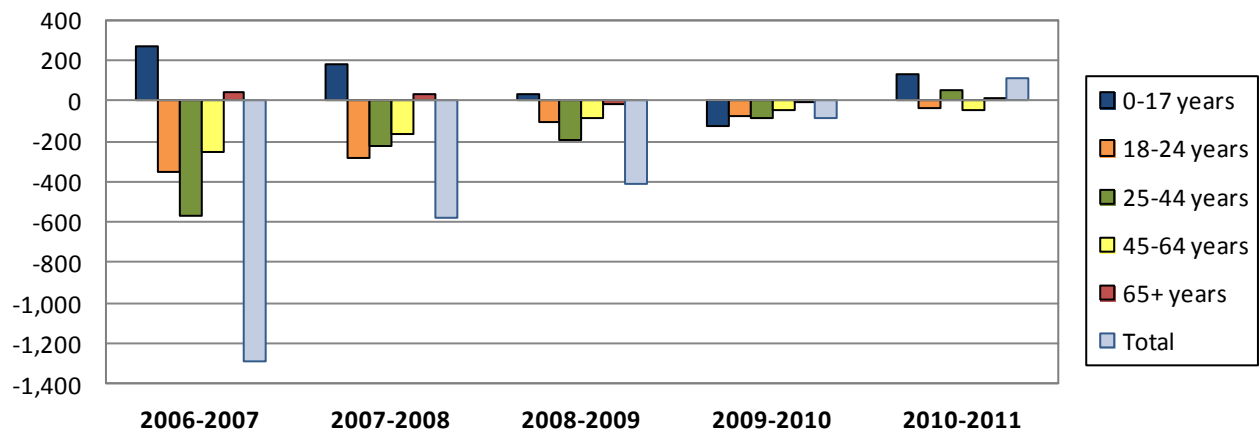
Source: Statistics Canada, Income Statistics Division, Migration Estimates by Census Division, 91C0025

Migrants - Thunder Bay District			
	In-Migrants	Out-Migrants	Net-Migrants
2006-2007	3,836	5,130	-1,294
2007-2008	3,920	4,498	-578
2008-2009	3,554	3,966	-412
2009-2010	3,534	3,623	-89
2010-2011	3,362	3,253	109
2006-2011	18,206	20,470	-2,264

**Net-Migrants**  
Thunder Bay District



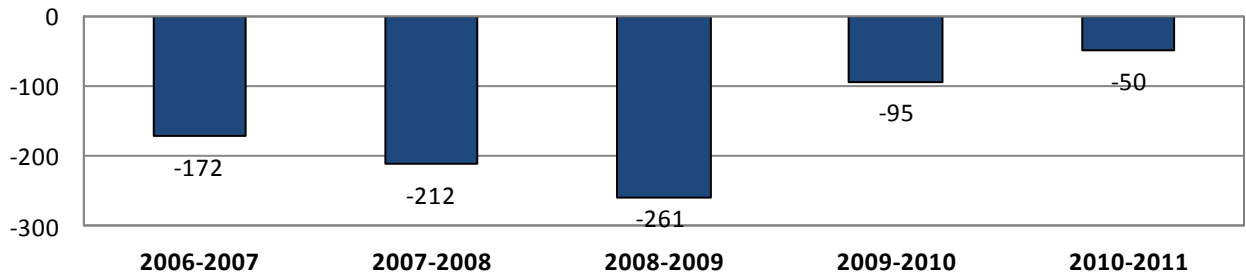
**Net-Migrants by Age Group**  
Thunder Bay District



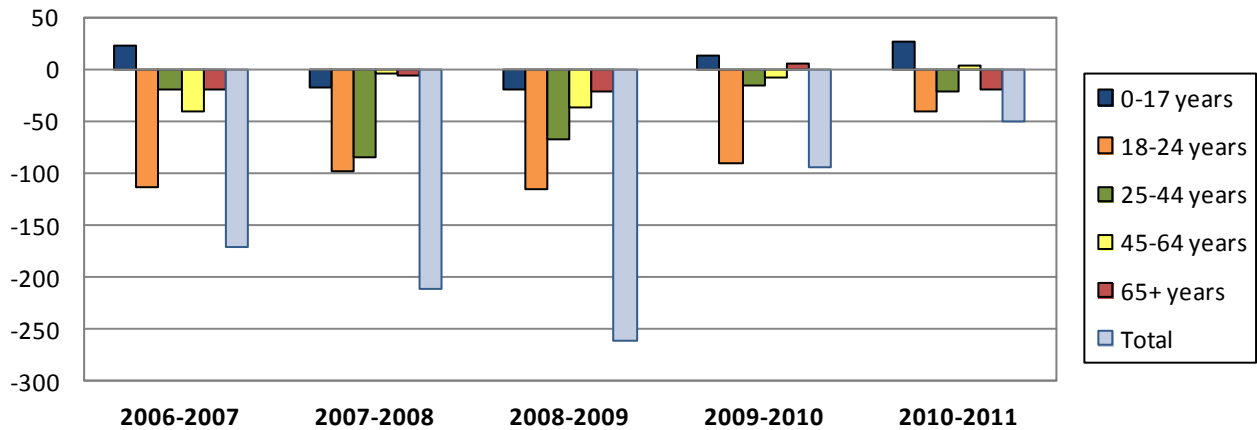
Source: Statistics Canada, Income Statistics Division, Migration Estimates by Census Division, 91C0025

Migrants - Rainy River District			
	In-Migrants	Out-Migrants	Net-Migrants
2006-2007	535	707	-172
2007-2008	532	744	-212
2008-2009	469	730	-261
2009-2010	532	627	-95
2010-2011	457	507	-50
2006-2011	2,525	3,315	-790

**Net-Migrants**  
Rainy River District



**Net-Migrants by Age Group**  
Rainy River District

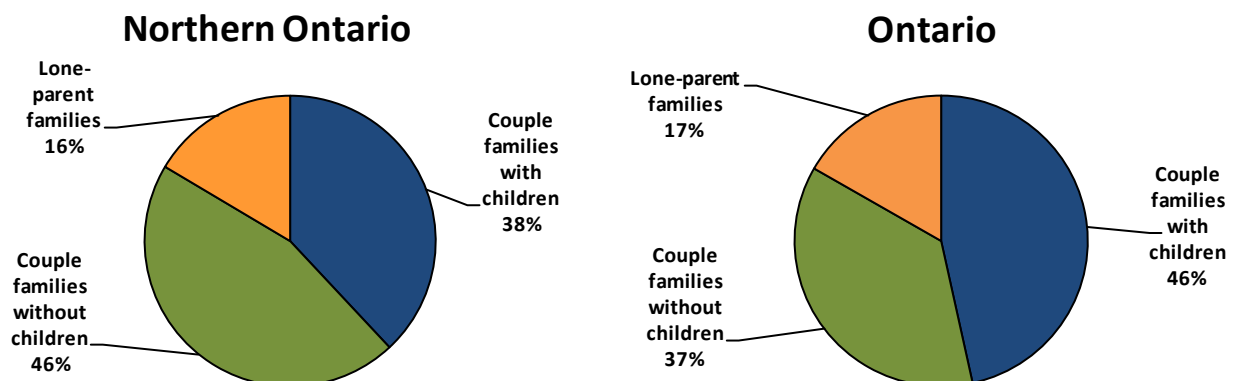


Source: Statistics Canada, Income Statistics Division, Migration Estimates by Census Division, 91C0025

Census Family by Family Structure - Northern Ontario

	2001		2006		2011	
	Number	%	Number	%	Number	%
Total number of census families	244,360	100.0	247,960	100.0	245,395	100.0
Couple families with children	109,435	44.8	102,325	41.3	93,355	38.0
Couple families without children	97,300	39.8	106,225	42.8	111,665	45.5
Lone-parent families	37,630	15.4	39,415	15.9	40,390	16.5

Census Families by Family Structure, 2011



Private Households by Household Size, 2011 - Northern Ontario

	Number	%
Total	351,160	100.0
1 person	99,885	28.4
2 persons	133,280	38.0
3 persons	52,245	14.9
4 persons	44,305	12.6
5 persons	14,905	4.2
6 or more persons	6,540	1.9
Average number of persons in private households	2.3	N/A

Source: Statistics Canada, special tabulations, unpublished data, 2001, 2006, and 2011 Censuses of Population

## Private Households by Household Type, 2011 - Northern Ontario

	Number	%
<b>Total</b>	351,160	100.0
<b>One-family households</b>	223,925	63.8
<b>Other family households</b>	16,720	4.8
<b>Non-family households</b>	110,510	31.5

## Total Children in Census Families in Private Households, 2011

	Northern Ontario		Ontario	
	Number	%	Number	%
<b>Total</b>	229,355	100.0	4,083,925	100.0
<b>Under 6 years</b>	48,675	21.2	839,960	20.6
<b>6 to 14 years</b>	78,180	34.1	1,323,750	32.4
<b>15 to 17 years</b>	30,535	13.3	496,005	12.1
<b>18 to 24 years</b>	47,310	20.6	888,980	21.8
<b>25 years and over</b>	24,655	10.7	535,230	13.1
<b>Average number of children at home per census family</b>	0.9		1.1	
<b>Average number of persons per census family</b>	2.8		3.0	

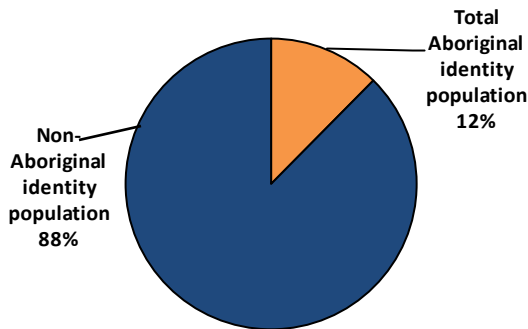
Source: Statistics Canada, special tabulation, unpublished data, 2011 Census of Population

**Total Population by Aboriginal Identity, 2011**

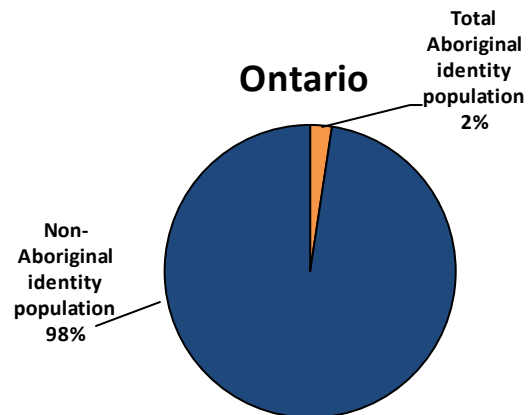
	Northern Ontario		Ontario	
	Number	%	Number	%
Total population	814,720	100.0	12,651,790	100.0
Total Aboriginal identity population	101,010	12.4	301,430	2.4
Non-Aboriginal identity population	713,715	87.6	12,350,360	97.6

**Aboriginal Identity, 2011**

**Northern Ontario**



**Ontario**



**Total Population by Visible Minority Group, 2011**

	Northern Ontario		Ontario	
	Number	%	Number	%
Total population by visible minority groups	814,720	100.0	12,651,795	100.0
Total visible minority population	15,585	1.9	3,279,565	25.9
Not a visible minority	799,135	98.1	9,372,225	74.1

Source: Statistics Canada, special tabulations, unpublished data, 2011 National Household Survey



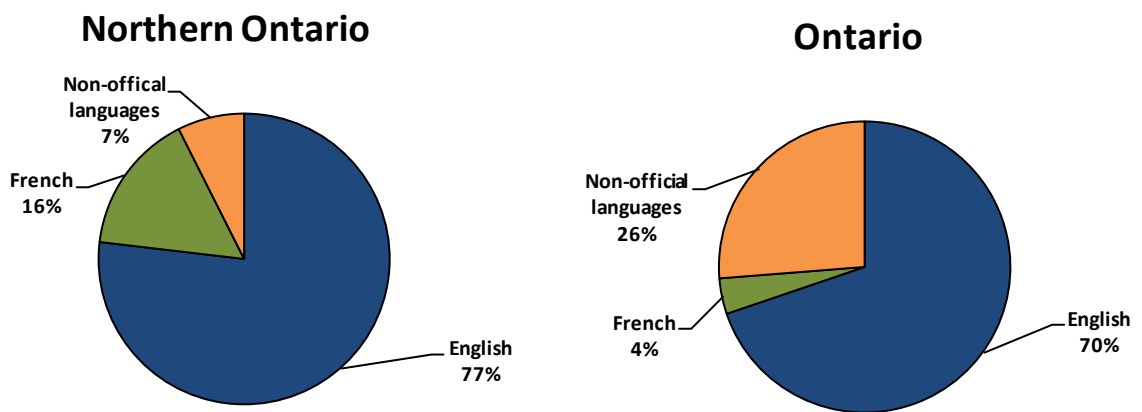
Top 10 Ethnic Origins, Total Responses, 2011

	Northern Ontario	Ontario
<b>Total population</b>	814,720	12,651,790
<b>Canadian</b>	284,440	2,946,095
<b>English</b>	226,815	2,925,660
<b>French</b>	225,550	1,362,320
<b>Irish</b>	163,055	2,069,110
<b>Scottish</b>	160,160	2,080,545
<b>First Nations (North American Indian)</b>	88,685	345,875
<b>German</b>	84,825	1,154,550
<b>Italian</b>	60,730	883,990
<b>Ukrainian</b>	43,530	342,005
<b>Finnish</b>	34,215	74,505

Source: Statistics Canada, special tabulations, unpublished data, 2011 National Household Survey

Mother Tongue, Single Response				
2001				
	Northern Ontario		Ontario	
	Number	%	Number	%
<b>Total</b>	817,985	100.0	11,122,935	100.0
<b>English</b>	605,690	74.0	7,965,225	71.6
<b>French</b>	139,510	17.1	485,630	4.4
<b>Non-offical languages</b>	72,785	8.9	2,672,085	24.0
2006				
	Northern Ontario		Ontario	
	Number	%	Number	%
<b>Total</b>	824,735	100.0	11,853,565	100.0
<b>English</b>	614,430	74.5	8,230,705	69.4
<b>French</b>	133,410	16.2	488,815	4.1
<b>Non-offical languages</b>	76,895	9.3	3,134,045	26.4
2011				
	Northern Ontario		Ontario	
	Number	%	Number	%
<b>Total</b>	811,555	100.0	12,434,775	100.0
<b>English</b>	623,765	76.9	8,677,040	69.8
<b>French</b>	127,600	15.7	493,295	4.0
<b>Non-offical languages</b>	60,185	7.4	3,264,440	26.3

Mother Tongue - Single Response, 2011



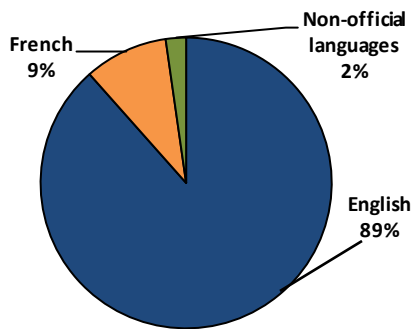
Source: Statistics Canada, special tabulations, unpublished data, 2001, 2006, and 2011 Censuses of Population

**Languages Spoken Most Often at Home, Single Response, 2011**

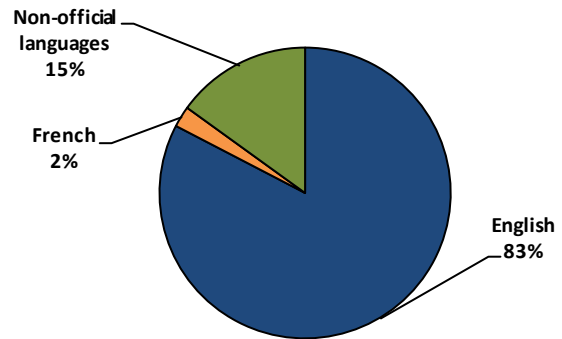
	Northern Ontario		Ontario	
	Number	%	Number	%
<b>Total</b>	810,350	100.0	12,156,790	100.0
<b>English</b>	716,745	88.4	10,044,810	82.6
<b>French</b>	75,310	9.3	284,115	2.3
<b>Non-official languages</b>	18,285	2.3	1,827,870	15.0

**Languages Spoken Most Often at Home – Single Response, 2011**

**Northern Ontario**



**Ontario**



**First Official Language Spoken, 2011**

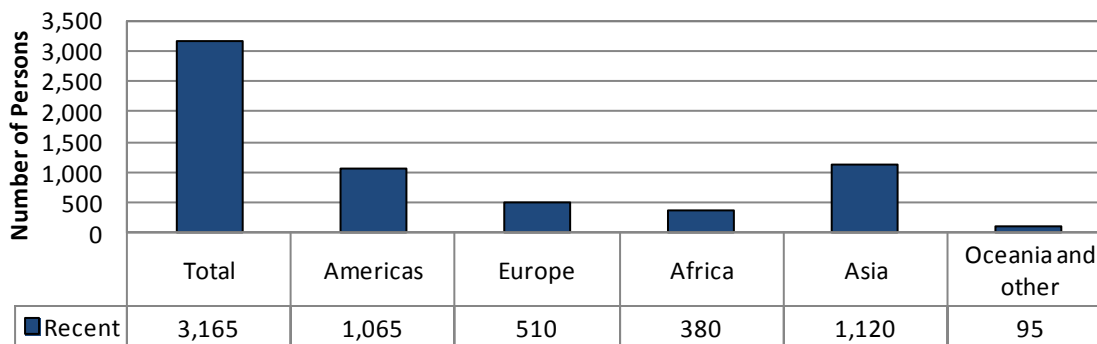
	Northern Ontario		Ontario	
	Number	%	Number	%
<b>Total population</b>	822,615	100.0	12,722,065	100.0
<b>English</b>	693,585	84.3	11,844,580	93.1
<b>French</b>	124,910	15.2	500,270	3.9
<b>English and French</b>	2,175	0.3	84,230	0.7
<b>Neither English nor French</b>	1,945	0.2	292,980	2.3

Source: Statistics Canada, special tabulations, unpublished data, 2011 National Household Survey

**Place of Birth of Total and Recent Immigrants in Private Households, 2011**

		Northern Ontario		Ontario	
		Number	%	Number	%
Total	Total	50,255	100.0	3,611,365	100.0
	Recent	3,165	100.0	501,060	100.0
Americas	Total	8,615	17.1	580,045	16.1
	Recent	1,065	33.6	82,225	16.4
Europe	Total	34,630	68.9	1,206,005	33.4
	Recent	510	16.1	59,945	12.0
Africa	Total	1,265	2.5	195,900	5.4
	Recent	380	12.0	40,950	8.2
Asia	Total	5,380	10.7	1,617,325	44.8
	Recent	1,120	35.4	316,080	63.1
Oceania and other	Total	360	0.7	12,085	0.3
	Recent	95	3.0	1,860	0.4

**Place of Birth of Recent Immigrants in Private Households, 2011**  
Northern Ontario



Source: Statistics Canada, special tabulations, unpublished data, 2011 National Household Survey

<b>Generation Status</b>				
<b>2001 Census</b>				
	<b>Northern Ontario</b>		<b>Ontario</b>	
	<b>Number</b>	<b>%</b>	<b>Number</b>	<b>%</b>
<b>Total population 15 years and over</b>	669,680	100.0	9,048,035	100.0
<b>1st generation</b>	59,670	8.9	2,951,230	32.6
<b>2nd generation</b>	106,200	15.9	1,808,580	20.0
<b>3rd generation and over</b>	503,805	75.2	4,288,230	47.4
<b>2006 Census</b>				
	<b>Northern Ontario</b>		<b>Ontario</b>	
	<b>Number</b>	<b>%</b>	<b>Number</b>	<b>%</b>
<b>Total population 15 years and over</b>	689,800	100.0	9,819,420	100.0
<b>1st generation</b>	58,805	8.5	3,340,210	34.0
<b>2nd generation</b>	102,225	14.8	1,912,460	19.5
<b>3rd generation and over</b>	528,775	76.7	4,566,750	46.5
<b>2011 National Household Survey</b>				
	<b>Northern Ontario</b>		<b>Ontario</b>	
	<b>Number</b>	<b>%</b>	<b>Number</b>	<b>%</b>
<b>Total population</b>	814,725	100.0	12,651,795	100.0
<b>1st generation</b>	53,950	6.6	3,779,630	29.9
<b>2nd generation</b>	107,395	13.2	2,849,290	22.5
<b>3rd generation and over</b>	653,380	80.2	6,022,870	47.6

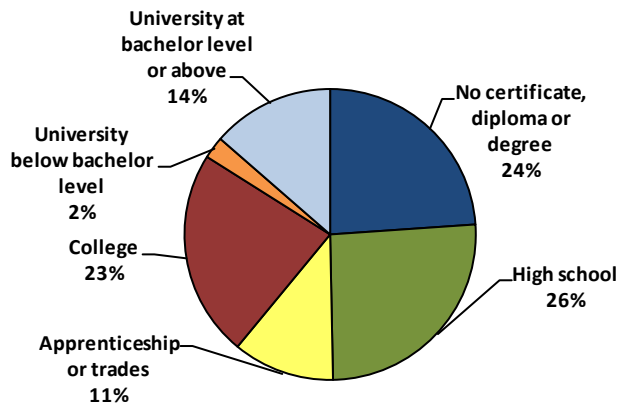
Source: Statistics Canada, special tabulations, unpublished data, 2001 and 2006 Censuses of Population, 2011 National Household Survey

**Total Population 15 Years and Over By Highest Certificate, Diploma, or Degree, 2011**

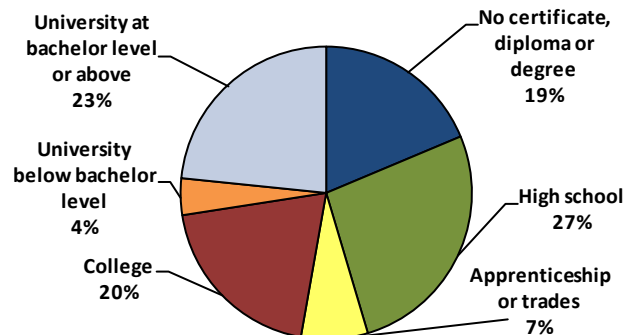
	Northern Ontario		Ontario	
	Number	%	Number	%
Total population	686,775	100.0	10,473,665	100.0
No certificate, diploma or degree	164,240	23.9	1,954,520	18.7
High school diploma or equivalent	177,150	25.8	2,801,805	26.8
Postsecondary certificate, diploma or degree	345,390	50.3	5,717,340	54.6
Apprenticeship or trades certificate or diploma	77,470	22.4	771,140	13.5
College, CEGEP or other non-university certificate or diploma	157,820	45.7	2,070,875	36.2
University certificate or diploma below bachelor level	16,830	4.9	427,145	7.5
University certificate, diploma or degree at bachelor level or above	93,265	27.0	2,448,175	42.8
Bachelor's degree	60,075	64.4	1,515,075	61.9
University certificate, diploma or degree above bachelor level	33,195	35.6	933,100	38.1

**Population 15 Years and Over by Highest Certificate, Diploma or Degree, 2011**

**Northern Ontario**



**Ontario**



Source: Statistics Canada, special tabulations, unpublished data, 2011 National Household Survey

**Major Field of Study for Population 15 Years and Over with  
Post Secondary Qualifications, 2011**

		Northern Ontario		Ontario	
		Number	%	Number	%
<b>Total population with post secondary qualifications - CIP 2011</b>	Male	171,570	100.0	2,770,625	100.0
	Female	173,815	100.0	2,946,715	100.0
<b>Education</b>	Male	8,390	4.9	93,405	3.4
	Female	22,115	12.7	294,210	10.0
<b>Visual and performing arts, and communications technologies</b>	Male	3,510	2.0	104,405	3.8
	Female	3,535	2.0	117,740	4.0
<b>Humanities</b>	Male	5,465	3.2	133,215	4.8
	Female	7,385	4.2	214,975	7.3
<b>Social and behavioural sciences and law</b>	Male	8,735	5.1	233,645	8.4
	Female	21,600	12.4	448,690	15.2
<b>Business, management and public administration</b>	Male	18,445	10.8	494,395	17.8
	Female	43,230	24.9	728,010	24.7
<b>Physical and life sciences and technologies</b>	Male	5,175	3.0	116,050	4.2
	Female	3,870	2.2	113,225	3.8
<b>Mathematics, computer and information sciences</b>	Male	3,855	2.2	167,780	6.1
	Female	2,965	1.7	99,845	3.4
<b>Architecture, engineering, and related technologies</b>	Male	84,265	49.1	1,046,005	37.8
	Female	4,325	2.5	105,365	3.6
<b>Agriculture, natural resources and conservation</b>	Male	8,010	4.7	68,510	2.5
	Female	2,345	1.3	35,305	1.2
<b>Health and related fields</b>	Male	9,680	5.6	151,235	5.5
	Female	50,730	29.2	640,390	21.7
<b>Personal, protective and transportation services</b>	Male	16,030	9.3	161,745	5.8
	Female	11,655	6.7	147,970	5.0
<b>Other fields of study</b>	Male	0	0.0	230	0.0
	Female	75	0.0	980	0.0

Source: Statistics Canada, special tabulations, unpublished data, 2011 National Household Survey

### Labour Force Activity for the Population 15 Years and Over

2006 Census						
	Northern Ontario			Ontario		
	Total	Male	Female	Total	Male	Female
<b>Total population 15 years and over</b>	689,800	336,765	353,035	9,819,420	4,744,710	5,074,710
<b>In the labour force</b>	423,715	221,305	202,410	6,587,575	3,437,670	3,149,905
Employed	389,485	202,515	186,975	6,164,245	3,230,050	2,934,195
Unemployed	34,230	18,790	15,440	423,335	207,620	215,710
<b>Not in the labour force</b>	266,085	115,460	150,625	3,231,840	1,307,035	1,924,805
<b>Participation rate (%)</b>	61.4	65.7	57.3	67.1	72.5	62.1
<b>Employment rate (%)</b>	56.5	60.1	53.0	62.8	68.1	57.8
<b>Unemployment rate (%)</b>	8.1	8.5	7.6	6.4	6.0	6.8

2011 National Household Survey						
	Northern Ontario			Ontario		
	Total	Male	Female	Total	Male	Female
<b>Total population 15 years and over</b>	686,780	336,805	349,975	10,473,665	5,064,720	5,408,950
<b>In the labour force</b>	415,425	213,860	201,565	6,864,985	3,542,030	3,322,960
Employed	377,050	191,720	185,325	6,297,000	3,249,165	3,047,835
Unemployed	38,375	22,135	16,240	567,985	292,860	275,120
<b>Not in the labour force</b>	271,355	122,945	148,410	3,608,685	1,522,690	2,085,990
<b>Participation rate (%)</b>	60.5	63.5	57.6	65.5	69.9	61.4
<b>Employment rate (%)</b>	54.9	56.9	53.0	60.1	64.2	56.3
<b>Unemployment rate (%)</b>	9.2	10.4	8.1	8.3	8.3	8.3

Note: Refer to Appendix A and B for information about Census and NHS

### Class of Worker for the Population 15 Years and Over, 2011

	Northern Ontario		Ontario	
	Number	%	Number	%
<b>All classes of worker</b>	406,360	100.0	6,680,245	100.0
<b>Employees</b>	372,065	91.6	5,973,825	89.4
<b>Self-employed</b>	34,295	8.4	706,425	10.6

Source: Statistics Canada, special tabulations, unpublished data, 2006 Census of Population, 2011 National Household Survey



<b>Total Labour Force Population Aged 15 Years and Over by Full-time or Part-time Weeks Worked, 2010 - Northern Ontario</b>		
	<b>Total</b>	
	<b>Number</b>	<b>%</b>
<b>Total</b>	415,425	100.0
<b>Did not work</b>	21,325	5.1
<b>Worked</b>	394,100	94.9
Worked full-time	307,580	78.0
Worked part-time	86,515	22.0
<b>Male</b>		
	<b>Male</b>	
	<b>Number</b>	<b>%</b>
<b>Total</b>	213,860	100.0
<b>Did not work</b>	10,975	5.1
<b>Worked</b>	202,890	94.9
Worked full-time	173,135	85.3
Worked part-time	29,755	14.7
<b>Female</b>		
	<b>Female</b>	
	<b>Number</b>	<b>%</b>
<b>Total</b>	201,565	100.0
<b>Did not work</b>	10,355	5.1
<b>Worked</b>	191,210	94.9
Worked full-time	134,445	70.3
Worked part-time	56,770	29.7

Source: Statistics Canada, special tabulations, unpublished data, 2011 National Household Survey

## Place of Work Status for the Employed Labour Force 15 Years and Over, 2011

	Northern Ontario		Ontario	
	Number	%	Number	%
<b>Males</b>	191,720	100.0	3,249,165	100.0
Worked at usual place	147,240	76.8	2,524,555	77.7
Worked at home	8,890	4.6	216,905	6.7
Worked outside Canada	440	0.2	21,150	0.7
No fixed workplace address	35,150	18.3	486,560	15.0
<b>Females</b>	185,330	100.0	3,047,835	100.0
Worked at usual place	164,915	89.0	2,646,420	86.8
Worked at home	9,160	4.9	206,895	6.8
Worked outside Canada	270	0.1	10,240	0.3
No fixed workplace address	10,985	5.9	184,280	6.0

## Top 10 Industries for the Labour Force 15 Years and Over, 2011

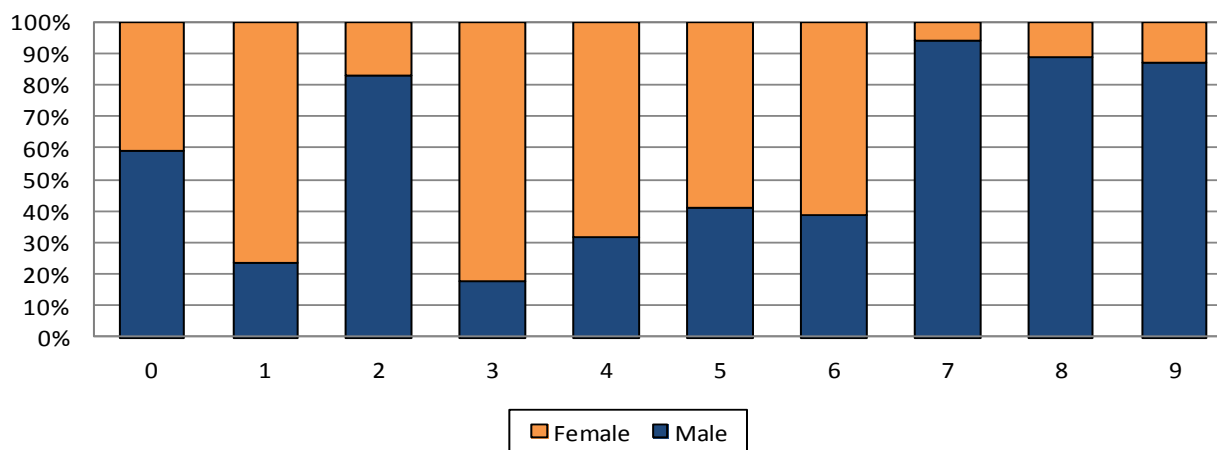
	Northern Ontario		Ontario	
	Number	%	Number	%
<b>All industries - NAICS 2007</b>	406,365	100.0	6,680,245	100.0
62 Health care and social assistance	58,300	14.3	692,130	10.4
44-45 Retail trade	52,160	12.8	751,205	11.2
91 Public administration	37,605	9.3	458,665	6.9
61 Educational services	33,745	8.3	499,690	7.5
23 Construction	32,410	8.0	417,895	6.3
72 Accommodation and food services	29,325	7.2	144,060	2.2
31-33 Manufacturing	24,430	6.0	697,565	10.4
48-49 Transportation and warehousing	20,075	4.9	307,405	4.6
81 Other services (except public administration)	18,105	4.5	296,345	4.4
21 Mining, quarrying, and oil and gas extraction	18,020	4.4	29,990	0.4
All other industries	82,185	20.2	2,385,295	35.7

Source: Statistics Canada, special tabulations, unpublished data, 2011 National Household Survey

Occupation for the Labour Force 15 Years and Over, 2011				
	Northern Ontario		Ontario	
	Number	%	Number	%
All occupations - NOC 2011	406,360	100.0	6,680,245	100.0
6 Sales and service occupations	97,655	24.0	1,550,260	23.2
7 Trades, transport and equipment operators and related occupations	73,325	18.0	868,515	13.0
1 Business, finance and administration occupations	58,350	14.4	1,138,325	17.0
4 Occupations in education, law and social, community and government services	54,375	13.4	801,465	12.0
0 Management occupations	36,460	9.0	770,575	11.5
3 Health occupations	29,750	7.3	392,695	5.9
2 Natural and applied sciences and related occupations	20,605	5.1	494,500	7.4
8 Natural resources, agriculture and related production occupations	15,165	3.7	106,810	1.6
9 Occupations in manufacturing and utilities	13,155	3.2	350,680	5.2
5 Occupations in art, culture, recreation and sport	7,505	1.8	206,420	3.1

### Occupation by Sex, 2011

Northern Ontario



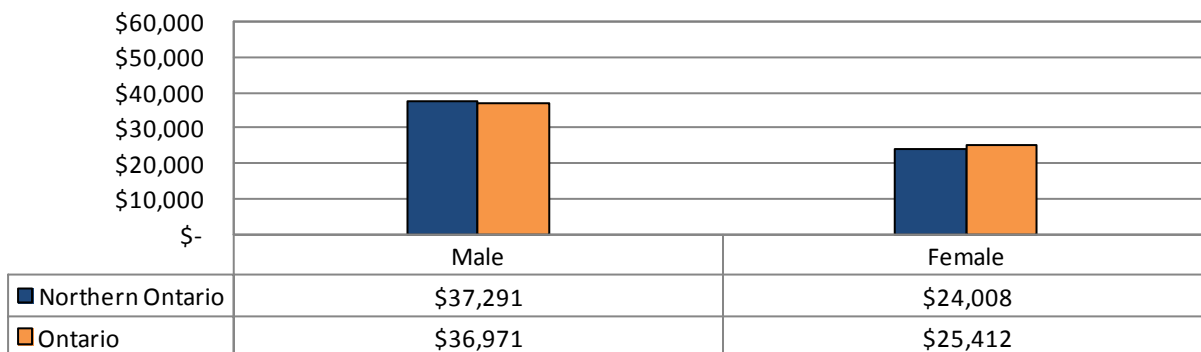
Please see table above for the corresponding occupational group names

Source: Statistics Canada, special tabulations, unpublished data, 2011 National Household Survey

### Income Distribution (Before-tax Total Income) for Individuals 15 Years and Over, 2010 - Northern Ontario

	Male		Female	
	Number	%	Number	%
<b>Population 15 years and over</b>	<b>336,805</b>	<b>100.0</b>	<b>349,975</b>	<b>100.0</b>
Without income	12,400	3.7	16,955	4.9
With income	324,400	96.3	333,015	95.2
Under \$5,000	27,675	8.5	29,725	8.9
\$5,000 to \$9,999	17,385	5.4	31,425	9.4
\$10,000 to \$14,999	23,335	7.2	39,230	11.8
\$15,000 to \$19,999	21,770	6.7	38,980	11.7
\$20,000 to \$29,999	41,780	12.9	57,940	17.4
\$30,000 to \$39,999	41,155	12.7	42,785	12.8
\$40,000 to \$49,999	38,590	11.9	32,025	9.6
\$50,000 to \$59,999	30,655	9.4	20,005	6.0
\$60,000 to \$79,999	39,805	12.3	21,560	6.5
\$80,000 to \$99,999	21,110	6.5	13,245	4.0
\$100,000 and over	21,150	6.5	6,105	1.8
\$100,000 to \$124,999	11,510	3.6	3,715	1.1
\$125,000 and over	9,640	3.0	2,390	0.7
<b>Median income \$</b>	<b>37,291</b>	<b>N/A</b>	<b>24,008</b>	<b>N/A</b>
<b>Average income \$</b>	<b>44,778</b>	<b>N/A</b>	<b>31,264</b>	<b>N/A</b>
<b>Median after-tax income \$</b>	<b>33,774</b>	<b>N/A</b>	<b>22,734</b>	<b>N/A</b>
<b>Average after-tax income \$</b>	<b>37,702</b>	<b>N/A</b>	<b>27,489</b>	<b>N/A</b>

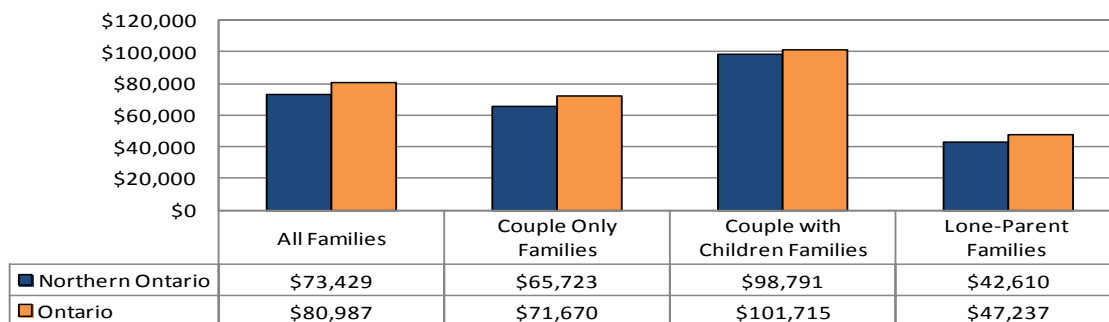
### Median Income Distribution (Before-tax Total) for Males and Females 15 Years and Over (\$), 2010



Source: Statistics Canada, special tabulations, unpublished data, 2011 National Household Survey

**Economic Family Income Distribution, 2010**

All Families		
	Northern Ontario	Ontario
Total economic families	242,935	3,528,375
Median family income \$	73,429	80,987
Average family income \$	85,475	100,152
Median after-tax family income \$	65,132	71,128
Average after-tax family income \$	72,987	83,322
Couple Only Families		
	Northern Ontario	Ontario
Total economic families	105,910	1,197,250
Median family income \$	65,723	71,670
Average family income \$	77,081	89,678
Median after-tax family income \$	58,666	63,402
Average after-tax family income \$	65,893	74,551
Couple with Children Families		
	Northern Ontario	Ontario
Total economic families	94,815	1,689,180
Median family income \$	98,791	101,715
Average family income \$	108,442	121,285
Median after-tax family income \$	85,105	87,820
Average after-tax family income \$	91,479	99,843
Lone Parent Families		
	Northern Ontario	Ontario
Total economic families	35,150	520,715
Median family income \$	42,610	47,237
Average family income \$	50,515	58,622
Median after-tax family income \$	40,703	44,398
Average after-tax family income \$	45,552	51,624

**Median Income Distribution (Before-tax)  
by Economic Family Type (\$), 2010**

Source: Statistics Canada, special tabulations, unpublished data, 2011 National Household Survey

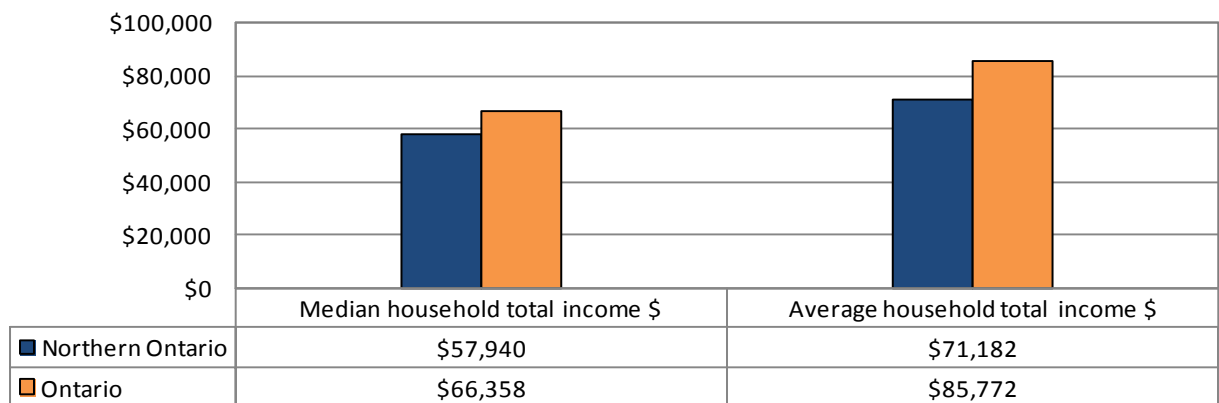
<b>Prevalence of Low Income, 2010 - Northern Ontario</b>				
<b>Population in private households for income status</b>				
	<b>Male</b>		<b>Female</b>	
	<b>Number</b>	<b>%</b>	<b>Number</b>	<b>%</b>
<b>Total</b>	386,915	100.0	396,785	100.0
<b>Less than 18 years</b>	77,645	20.1	72,385	18.2
Less than 6 years	22,805	29.4	21,770	30.1
<b>18 to 64 years</b>	245,580	63.5	251,835	63.5
<b>65 years and over</b>	63,680	16.5	72,565	18.3
<b>In low income in 2010 based on after-tax low-income measure (LIM-AT)</b>				
	<b>Male</b>		<b>Female</b>	
	<b>Number</b>	<b>%</b>	<b>Number</b>	<b>%</b>
<b>Total</b>	48,150	100.0	57,680	100.0
<b>Less than 18 years</b>	13,495	28.0	12,850	22.3
Less than 6 years	4,725	35.0	4,415	34.4
<b>18 to 64 years</b>	31,275	65.0	36,855	63.9
<b>65 years and over</b>	3,380	7.0	7,980	13.8
<b>Prevalence of low income in 2010 based on after-tax low income measure %</b>				
	<b>Male</b>		<b>Female</b>	
	<b>Number</b>	<b>%</b>	<b>Number</b>	<b>%</b>
<b>Total</b>		12.4		14.5
<b>Less than 18 years</b>		17.4		17.8
Less than 6 years		20.7		20.3
<b>18 to 64 years</b>		12.7		14.6
<b>65 years and over</b>		5.3		11.0

Source: Statistics Canada, special tabulations, unpublished data, 2011 National Household Survey.

### Household Income Distribution (Before-tax Total Income) for All Private Households, 2010

	Northern Ontario		Ontario	
	Number	%	Number	%
<b>Total number of households</b>	<b>350,330</b>	<b>100.0</b>	<b>4,886,655</b>	<b>100.0</b>
Under \$5,000	7,345	2.1	123,780	2.5
\$5,000 to \$9,999	5,930	1.7	78,000	1.6
\$10,000 to \$14,999	13,425	3.8	143,390	2.9
\$15,000 to \$19,999	19,750	5.6	211,140	4.3
\$20,000 to \$29,999	35,225	10.1	405,725	8.3
\$30,000 to \$39,999	34,815	9.9	425,410	8.7
\$40,000 to \$49,999	33,805	9.6	425,720	8.7
\$50,000 to \$59,999	31,070	8.9	398,700	8.2
\$60,000 to \$79,999	50,785	14.5	680,850	13.9
\$80,000 to \$99,999	38,295	10.9	552,660	11.3
\$100,000 to \$124,999	32,655	9.3	497,970	10.2
\$125,000 to \$149,999	20,100	5.7	331,460	6.8
\$150,000 and over	27,145	7.7	611,840	12.5
<b>Median household total income \$</b>	<b>57,940</b>	<b>N/A</b>	<b>66,358</b>	<b>N/A</b>
<b>Average household total income \$</b>	<b>71,182</b>	<b>N/A</b>	<b>85,772</b>	<b>N/A</b>
<b>Median after-tax household income \$</b>	<b>51,982</b>	<b>N/A</b>	<b>58,717</b>	<b>N/A</b>
<b>Average after-tax household income \$</b>	<b>61,026</b>	<b>N/A</b>	<b>71,523</b>	<b>N/A</b>

### Household Income Distribution (Before-tax ) for All Private Households (\$), 2010



Source: Statistics Canada, special tabulations, unpublished data, 2011 National Household Survey.

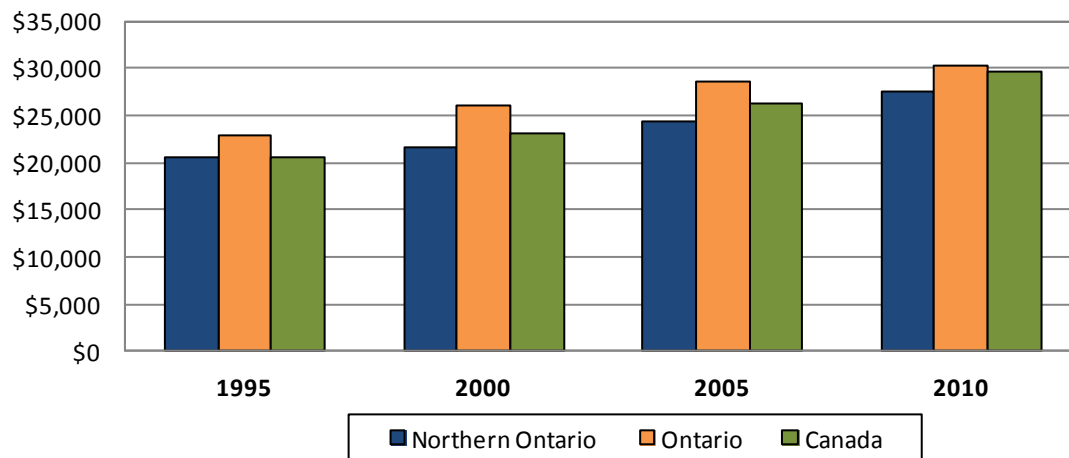
**Median Employment Income for Individuals (\$)**

	1995	2000	2005	2010
<b>Northern Ontario</b>	20,630	21,570	24,450	27,600
<b>Ontario</b>	23,000	26,000	28,600	30,390
<b>Canada</b>	20,600	23,200	26,300	29,730

**Median Employment Income for Individuals, Index (1995=100)**

	1995	2000	2005	2010
<b>Northern Ontario</b>	100.0	104.6	104.6	133.8
<b>Ontario</b>	100.0	113.0	124.3	132.1
<b>Canada</b>	100.0	112.6	127.7	144.3

**Median Employment Income for Individuals**



Source: Statistics Canada, Income Statistics Division, Labour Profiles, 71C0018

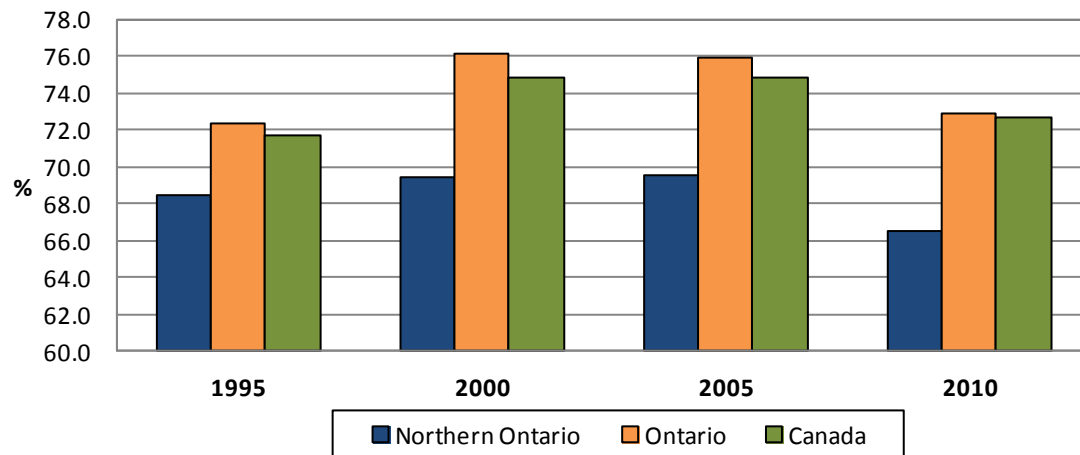


**Employment Income as a Percentage of Total Income (%)**

	1995	2000	2005	2010
Northern Ontario	68.5	69.4	69.6	66.5
Ontario	72.3	76.1	75.9	72.8
Canada	71.7	74.8	74.9	72.7

**Employment Income as a Percentage of Total Income, Index (1995=100)**

	1995	2000	2005	2010
Northern Ontario	100.0	101.4	101.6	97.1
Ontario	100.0	105.2	105.0	100.7
Canada	100.0	104.3	104.4	101.4

**Employment Income as a Percentage of Total Income**

Source: Statistics Canada, Income Statistics Division, Labour Profiles, 71C0018

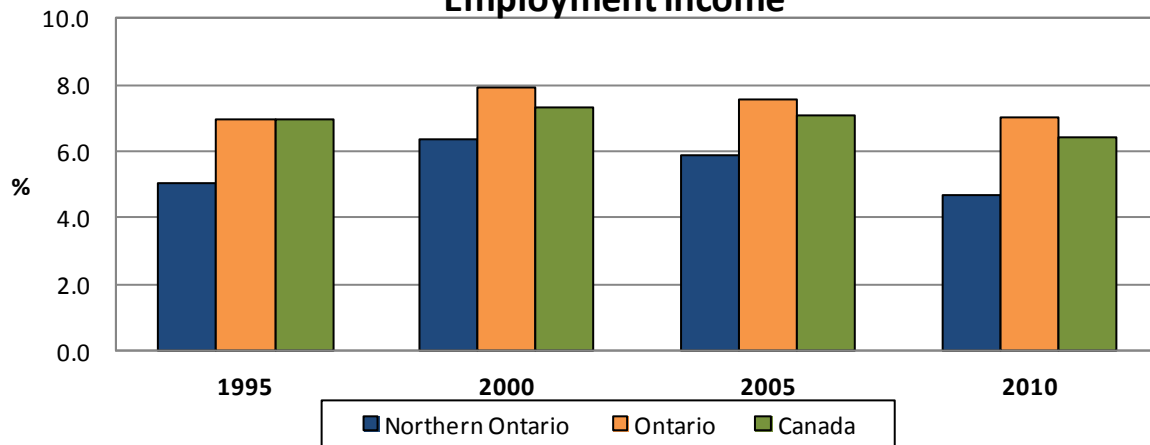
**Self Employment Income as a Percentage of Employment Income (%)**

	1995	2000	2005	2010
Northern Ontario	5.1	6.3	5.9	4.7
Ontario	7.0	7.9	7.6	7.0
Canada	6.9	7.3	7.1	6.4

**Self Employment Income as a Percentage of Employment Income, Index (1995=100)**

	1995	2000	2005	2010
Northern Ontario	100.0	125.1	116.0	92.0
Ontario	100.0	113.4	108.6	100.4
Canada	100.0	105.3	101.6	92.1

**Self Employment Income as a Percentage of Employment Income**



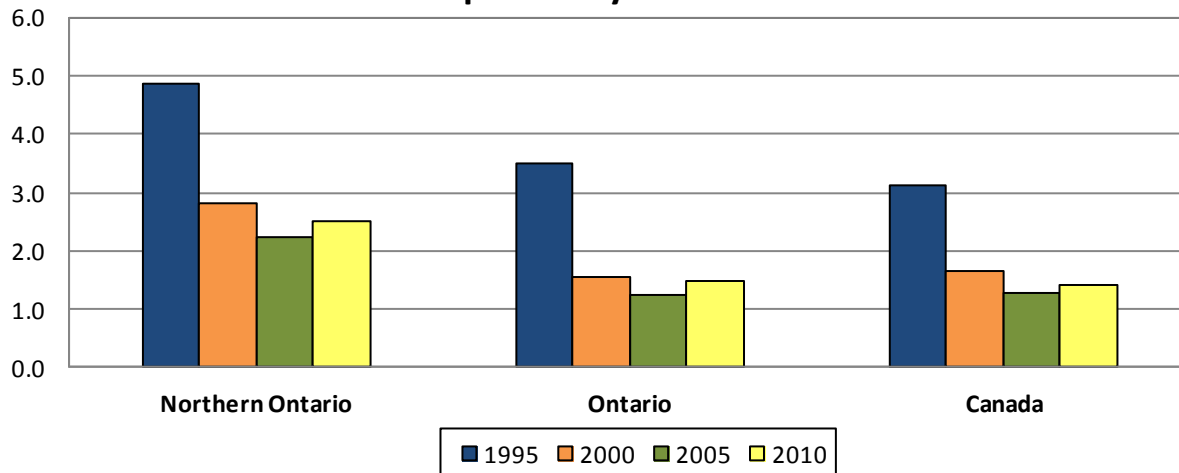
**Number and Economic Dependency Ratio: Social Assistance**

	Northern Ontario		Ontario		Canada	
	Number	EDR	Number	EDR	Number	EDR
<b>1995</b>	76,760	4.9	752,460	3.5	1,961,310	3.1
<b>2000</b>	53,800	2.8	512,270	1.5	1,532,450	1.7
<b>2005</b>	46,730	2.3	495,640	1.3	1,356,750	1.3
<b>2010</b>	51,720	2.5	606,390	1.5	1,508,550	1.4

**Economic Dependency Ratio: Social Assistance, Index (1995=100)**

	1995	2000	2005	2010
<b>Northern Ontario</b>	100.0	58.1	46.2	51.3
<b>Ontario</b>	100.0	44.1	35.8	43.0
<b>Canada</b>	100.0	53.4	40.6	44.7

**Economic Dependency Ratio: Social Assistance**



The *Economic Dependency Ratio: Social Assistance* is the amount of social assistance dollars received as benefits in a given area per \$100 of employment income for the same area.

Source: Statistics Canada, Income Statistics Division, Economic Dependency Profiles, 13C0017

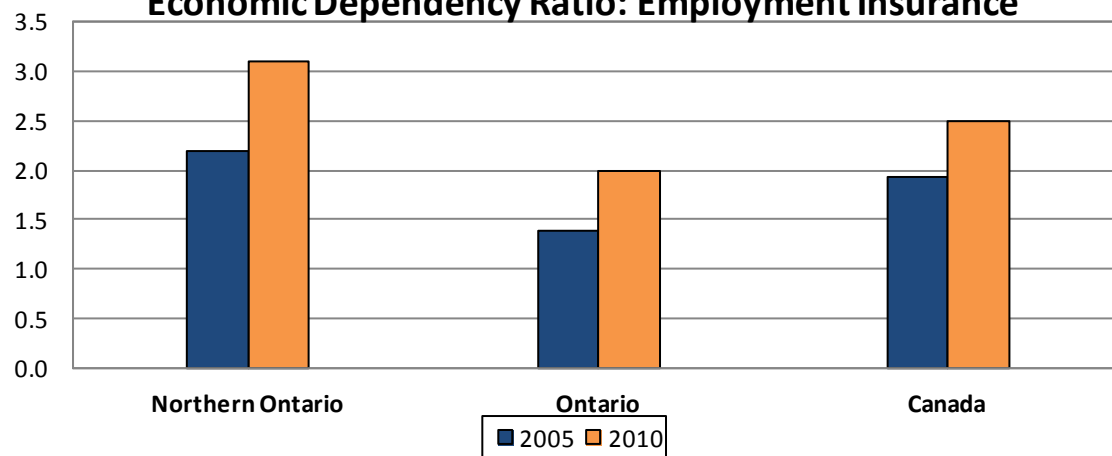
### Number and Economic Dependency Ratio: Employment Insurance

	2005		2010	
	Number	EDR	Number	EDR
Northern Ontario	63,700	2.2	77,050	3.1
Ontario	678,240	1.4	898,600	2.0
Canada	2,296,870	1.9	2,800,000	2.5

### Economic Dependency Ratio: Employment Insurance, Index (2005=100)

	2005	2010
Northern Ontario	100.0	140.9
Ontario	100.0	144.9
Canada	100.0	129.5

### Economic Dependency Ratio: Employment Insurance



The *Economic Dependency Ratio: Employment Insurance* is the amount of employment insurance dollars received as benefits in a given area per \$100 of employment income for the same area.

Source: Statistics Canada, Income Statistics Division, Economic Dependency Profiles, 13C0017

## Location Counts for Total Business Locations, December 2012 - Top 10 Industries

Industries - NAICS 2012	Northern Ontario		Ontario	
	Number	%	Number	%
<b>Total</b>	47,905	100.0	910,821	100.0
<b>23 - Construction</b>	6,368	13.3	101,804	11.2
<b>44-45 - Retail trade</b>	5,988	12.5	82,631	9.1
<b>53 - Real estate and rental and leasing</b>	5,188	10.8	105,961	11.6
<b>81 - Other services (except public administration)</b>	4,114	8.6	68,758	7.5
<b>54 - Professional, scientific and technical services</b>	3,795	7.9	136,505	15.0
<b>72 - Accommodation and food services</b>	3,398	7.1	35,882	3.9
<b>62 - Health care and social assistance</b>	3,300	6.9	50,298	5.5
<b>52 - Finance and insurance</b>	2,469	5.2	55,262	6.1
<b>48-49 - Transportation and warehousing</b>	2,425	5.1	48,443	5.3
<b>11 - Agriculture, forestry, fishing and hunting</b>	2,171	4.5	37,800	4.2
<b>All other industries</b>	8,689	18.1	187,477	20.6

## Location Counts for Small Business Locations, December 2012 - Top 10 Industries

Industries - NAICS 2012	Northern Ontario		Ontario	
	Number	%	Number	%
<b>Total</b>	25,735	100.0	388,780	100.0
<b>44-45 - Retail trade</b>	4,285	16.7	50,630	13.0
<b>23 - Construction</b>	3,425	13.3	40,713	10.5
<b>81 - Other services (except public administration)</b>	2,609	10.1	41,460	10.7
<b>62 - Health care and social assistance</b>	2,537	9.9	35,092	9.0
<b>72 - Accommodation and food services</b>	2,332	9.1	25,874	6.7
<b>54 - Professional, scientific and technical services</b>	1,719	6.7	50,371	13.0
<b>53 - Real estate and rental and leasing</b>	1,239	4.8	19,735	5.1
<b>48-49 - Transportation and warehousing</b>	1,133	4.4	17,497	4.5
<b>41 - Wholesale trade</b>	1,105	4.3	22,509	5.8
<b>52 - Finance and insurance</b>	979	3.8	16,459	4.2
<b>All other industries</b>	4,372	17.0	68,440	17.6

"Small" business locations include all active locations with 1-99 employees.

Source: Statistics Canada, Business Register Division, Business Register Tabulations, 61C0024

## Location Counts for Medium Business Locations, December 2012 - Top 10 Industries

Industries - NAICS 2012	Northern Ontario		Ontario	
	Number	%	Number	%
<b>Total</b>	478	100.0	8,050	100.0
<b>62 - Health care and social assistance</b>	103	21.5	825	10.2
<b>44-45 - Retail trade</b>	89	18.6	1,278	15.9
<b>91 - Public administration</b>	51	10.7	296	3.7
<b>48-49 - Transportation and warehousing</b>	34	7.1	355	4.4
<b>31-33 - Manufacturing</b>	30	6.3	1,367	17.0
<b>23 - Construction</b>	25	5.2	359	4.5
<b>21 - Mining, quarrying, and oil and gas extraction</b>	24	5.0	30	0.4
<b>56 - Administrative and support, waste management and remediation services</b>	22	4.6	672	8.3
<b>72 - Accommodation and food services</b>	22	4.6	441	5.5
<b>81 - Other services (except public administration)</b>	16	3.3	205	2.5
<b>All other industries</b>	62	13.0	2,222	27.6

The "Medium" business locations include all active locations with 100-499 employees.

## Location Counts for Large Business Locations, December 2012 - Top 10 Industries

Industries - NAICS 2012	Northern Ontario		Ontario	
	Number	%	Number	%
<b>Total</b>	58	100.0	1,040	100.0
<b>61 - Educational services</b>	23	39.7	116	11.2
<b>31-33 - Manufacturing</b>	10	17.2	136	13.1
<b>62 - Health care and social assistance</b>	10	17.2	137	13.2
<b>91 - Public administration</b>	4	6.9	125	12.0
<b>21 - Mining, quarrying, and oil and gas extraction</b>	3	5.2	6	0.6
<b>56 - Administrative and support, waste management and remediation services</b>	3	5.2	74	7.1
<b>11 - Agriculture, forestry, fishing and hunting</b>	2	3.4	5	0.5
<b>23 - Construction</b>	1	1.7	30	2.9
<b>48-49 - Transportation and warehousing</b>	1	1.7	36	3.5
<b>55 - Management of companies and enterprises</b>	1	1.7	87	8.4
<b>All other industries</b>	0	0.0	288	27.7

The "Large" business locations include all active locations with 500+ employees.

Source: Statistics Canada, Business Register Division, Business Register Tabulations, 61C0024

# APPENDIX A

## Census

The census is Canada's largest and most comprehensive data source. The Census of Population collects demographic and linguistic information on every man, woman and child living in Canada. The last census took place in May 2011.

The census is the main source of data available in a standardized format for small areas. It provides nationally comparable data that can be cross-classified to show details. It is also the main body of comprehensive statistical data at the subprovincial level on Canada's population.

The Census of Population is taken to meet statutory requirements. For example, population counts are used to realign the boundaries of federal electoral districts, to calculate transfer payments between levels of government, and to support a variety of programs.

The data are needed by both the public and private sectors to support decision-making in many areas. For example:

- to plan community services such as schools, day care, police services and fire protection
- to forecast consumer demand
- to conduct market research studies.

For 2011, Statistics Canada did not use a mandatory long-form questionnaire as part of the census. Information previously collected by the mandatory long-form census questionnaire was collected as part of the new voluntary National Household Survey (NHS).

The 2011 Census questionnaire consisted of the same eight questions that appeared on the 2006 Census short-form questionnaire, with the addition of two questions on language.

Please visit the following link for more information about the Census of Population:

<http://www12.statcan.gc.ca/census-recensement/2011/ref/index-eng.cfm>

## **Census Glossary**

### **Age:**

Refers to the age at last birthday as of the census reference date, May 11, 2011.

### **Census Family:**

Refers to a married couple (with or without children of either and/or both spouses), a common-law couple (with or without children of either and/or both partners) or a lone parent of any marital status, with at least one child. A couple may be of opposite sex or same sex.

### **Census Family Structure:**

Refers to the classification of census families into married couples (with or without children of either and/or both spouses), common-law couples (with or without children of either and/or both partners), and lone-parent families by sex of parent.

### **First Official Language Spoken:**

This variable was derived within the framework of the application of the *Official Languages Act*. This derivation method is described in the regulations concerning the use of official languages for the provision of public services. It takes into account, first, the knowledge of the two official languages, second, the mother tongue, and third, the home language.

### **Generation Status:**

Generation status refers to whether or not the person or the person's parents were born in Canada. It identifies persons as being first generation, second generation or third generation or more.

1<sup>st</sup> Generation: Persons born outside Canada.

2<sup>nd</sup> Generation: Persons born inside Canada with at least one parent born outside Canada.

3<sup>rd</sup> or more Generation: Persons born inside Canada with both parents born inside Canada.

### **Labour Force Activity (2006):**

Refers to the labour market activity of the population 15 years of age and over in the week (Sunday to Saturday) prior to Census Day (May 16, 2006). Respondents were classified as Employed, Unemployed, or Not in the labour force.

### **Home Language:**

Refers to the language spoken most often or on a regular basis at home by the individual on May 10, 2011.

### **Mother Tongue:**

Refers to the first language learned at home in childhood and still understood by the individual on May 10, 2011.



## APPENDIX B

### National Household Survey

The 2011 National Household Survey (NHS) provides information about the demographic, social and economic characteristics of Canadians and the dwellings in which they live. The objective of the NHS is to provide data for small geographic areas and small population groups.

Between May and August 2011, Statistics Canada conducted the National Household Survey (NHS) for the first time. This voluntary, self-administered survey was introduced as a replacement for the long census questionnaire, more widely known as Census Form 2B.

Please visit the following link for more information about the National Household Survey:

<http://www12.statcan.gc.ca/nhs-enm/2011/ref/index-eng.cfm>

#### Global Non-Response Rate

The global non-response rate (GNR) is an indicator of data quality which combines complete non-response and partial non-response to the survey. A smaller GNR indicates a lower risk of non-response bias, i.e., a lower risk of lack of accuracy. Global non-response rates are determined for each of the NHS geographic areas.

## **National Household Survey Glossary**

### **Aboriginal Identity:**

Refers to those persons who reported identifying with at least one Aboriginal group, that is, North American Indian, Métis or Inuit, and/or those who reported being a Treaty Indian or a Registered Indian, as defined by the *Indian Act* of Canada, and/or those who reported they were members of an Indian band or First Nation.

### **Class of Worker:**

Class of worker refers to whether an employed person is an employee or is self-employed. The self-employed include persons with or without a business, as well as unpaid family workers.

### **Economic Family:**

Refers to a group of two or more persons who live in the same dwelling and are related to each other by blood, marriage, common-law, adoption or a foster relationship. A couple may be of opposite or same sex.

### **Economic Family Total Income:**

The total income of an economic family is the sum of the total incomes of all members of that family.

### **Ethnic Origin:**

Refers to the ethnic or cultural origins of the respondent's ancestors. An ancestor is usually more distant than a grandparent.

### **Full-time or part-time weeks worked in 2010:**

Refers to persons who worked for pay or in self-employment in 2010. These persons were asked to report whether the weeks they worked in 2010 were full-time weeks (30 hours or more per week) or not, on the basis of all jobs held.

### **Generation Status:**

Generation status refers to whether or not the person or the person's parents were born in Canada. It identifies persons as being first generation, second generation or third generation or more.

1<sup>st</sup> Generation: Persons born outside Canada.

2<sup>nd</sup> Generation: Persons born inside Canada with at least one parent born outside Canada.

3<sup>rd</sup> or more Generation: Persons born inside Canada with both parents born inside Canada.

### **Highest Certificate, Diploma or Degree:**

Information indicating the person's most advanced certificate, diploma or degree. This is a derived variable obtained from the educational qualifications questions, which asked for all certificates, diplomas and degrees to be reported. The general hierarchy used in deriving this variable (high school graduation, trades, college, university) is loosely tied to the 'in-class' duration of the various types of education.

**Household:**

Refers to a person or a group of persons (other than foreign residents) who occupy the same dwelling and do not have a usual place of residence elsewhere in Canada. It may consist of a family group (census family) with or without other persons, of two or more families sharing a dwelling, of a group of unrelated persons, or of one person living alone.

**Household Total Income:**

The total income of a household is the sum of the total incomes of all members of that household.

**Household Size:**

Number of persons occupying a private dwelling.

**Household Type:**

Refers to the basic division of private households into family and non-family households. Family household refers to a household that contains at least one census family, that is, a married couple with or without children, or a couple living common-law with or without children, or a lone parent living with one or more children (lone-parent family).

One-family household refers to a single census family (with or without other persons) that occupies a private dwelling. Multiple-family household refers to a household in which two or more census families (with or without additional persons) occupy the same private dwelling. Non-family household refers to either one person living alone in a private dwelling or to a group of two or more people who share a private dwelling, but who do not constitute a census family.

**Industry (based on the North American Industry Classification System [NAICS] 2007):**

Refers to the general nature of the business carried out in the establishment where the person worked.

**Labour Force:**

Refers to persons who, during the week of Sunday, May 1 to Saturday, May 7, 2011, were either employed or unemployed.

Labour force = Employed + Unemployed

Early enumeration was conducted in remote, isolated parts of the provinces and territories in February, March and April 2011. When enumeration has taken place before May 2011, the reference date used is the date on which the household was enumerated.

**Labour Force Status:**

Refers to whether a person aged 15 years and over living in a private household was employed, unemployed or not in the labour force during the week of Sunday, May 1 to Saturday, May 7, 2011.

Early enumeration was conducted in remote, isolated parts of the provinces and territories in February, March and April 2011. When enumeration has taken place before May 2011, the reference date used is the date on which the household was enumerated.

**Major Field of Study:**

Main subject area of the person's highest postsecondary certificate, diploma or degree classified according to the Classification of Instructional Programs (CIP) Canada 2011.

**Occupation (based on the National Occupational Classification [NOC] 2011):**

Refers to the kind of work performed by persons during the week of Sunday, May 1 to Saturday, May 7, 2011, as determined by their kind of work and the description of the main activities in their job.

**Place of Birth:**

Refers to the province or territory where the respondent was born, for respondents who were born in Canada, or to the country where the respondent was born, for respondents born outside Canada.

**Place of Work Status:**

Classification of respondents 15 years of age and over in private households who worked at some time since January 1, 2010 according to whether they worked at home, worked outside Canada, had no fixed workplace address, or worked at a specific address (usual place of work).

**Prevalence of Low Income:**

Proportion or percentage of persons, economic families, persons not in an economic family aged 15 years or over or households in low income according to one of the low-income lines.

Income status can be measured in several different ways in household surveys. For the standard products of the National Household Survey, the line chosen is a relative measure: the after-tax low-income measure (LIM-AT).

For this measure, the income used is after-tax income of households. There are no regional variations to account for prices or cost of living differences: all applicable households in Canada face the same line adjusted for household size. This line is set at half the median of adjusted household after-tax income. To account for potential economies of scale, the income of households with more than one member is divided by the square root of the size of the household.

All household members are considered to share the household income and are attributed the same income status.

**Recent Immigrants:**

Recent immigrants are immigrants who landed in Canada between January 1, 2006 and May 10, 2011.

**Total Income:**

Total of income from all sources, including employment income, income from government programs, pension income, investment income and any other money income.

**Visible Minority Group:**

Refers to the visible minority group to which the respondent belongs. The Employment Equity Act defines visible minorities as 'persons, other than Aboriginal peoples, who are non-Caucasian in race or non-white in colour'.

# APPENDIX C

## Small Area and Administrative Data (SAAD)

From the income tax forms submitted each year by Canadians, the Annual Estimates for Census Families and Individuals (T1 Family File) produces a wealth of economic and demographic information for use by both the private and public sectors. Close to 26 million records were processed in 2011 to provide the most detailed and accurate data possible. In fact, the information represents nearly 95% of the Canadian population.

Glossary:

### **Economic Dependency Ratio (EDR):**

For a given area, the EDR is the ratio of transfer dollars to every \$100 of total employment income. For example, where a table shows an EDR of 12.1, it means that \$12.10 was received in transfer payments for every \$100 of employment income for that area.

### **Employment Income:**

Employment income includes wages and salaries, commissions from employment, training allowances, tips and gratuities, self-employment income (net income from business, profession, farming, fishing and commissions) and Indian employment income (new in 1999).

### **Employment Insurance (EI) *Previously Unemployment Insurance (UI)***

Comprises all types of benefits paid to individuals under this program, regardless of reason, including regular benefits for unemployment, fishing, job creation, maternity, parental/adoption, retirement, self-employment, sickness, training and work sharing.

### **Median:**

Is the middle number in a group of numbers. Where a median income, for example, is given as \$26,000, it means that exactly half of the incomes reported are greater than or equal to \$26,000, and that the other half are less than or equal to the median amount. Median incomes in the data tables are rounded to the nearest hundred dollars and starting with 2007 to the nearest ten dollars. Zero values are not included in the calculation of medians for individuals, but are included in the calculation of medians for families.

### **Self-Employment Income:**

Is the net income from business, a profession, commissions, farming and fishing.

### **Social Assistance**

Includes payments made in the year on the basis of a means, needs or income test (whether made by an organized charity or under a government program). The value is reported on line 145 of the personal income tax return.

Please visit the following link for more information about this data set and definitions:

<http://www.statcan.ca/bsolc/english/bsolc?catno=17-507-X>

# APPENDIX D

## Canadian Business Patterns

Canadian Business Patterns provides accurate and complete counts of active locations by employment size range by industry classification. These counts can be used to study economic activity and market potential in the CFDC.

The top 10 NAICS categories are provided. Data is provided for the total active statistical locations as well as small, medium and large active statistical locations. Counts are also provided for locations where the number of employees is indeterminate.

### *Statistical Location*

The location is an operating entity, specifically a production entity which:

- (a) Conducts economic activity at or from a single physical location or group of locations;
- (b) Resides within the smallest standardized geographical area;
- (c) Is able to provide employment data at a minimum.

Please visit the following link for more information about this data source:

[http://www23.statcan.gc.ca/imdb/p2SV.pl?Function=getSurvey&SDDS=1105&Item\\_Id=51930&lang=en](http://www23.statcan.gc.ca/imdb/p2SV.pl?Function=getSurvey&SDDS=1105&Item_Id=51930&lang=en)