

**Socio-economic Profile for
Northeastern Region
Community Futures Development Corporation**

**Prepared for:
FedNor/Industry Canada**



**Statistics Canada
Central Region
June 2015**



**Statistics
Canada** **Statistique
Canada**

Canada

TABLE OF CONTENTS

Introduction	4
Geography Note	5
List of Community Futures Development Corporations	6
Executive Summary	7-9
DEMOGRAPHIC PROFILE	
Population Change	10
Population by Age Groups	10
Migration	11-20
Census Families	21
Private Households	21-22
Census Family Status	22
ETHNOCULTURAL PROFILE	
Aboriginal Identity	23
Visible Minority Groups	23
Ethnic Origin	24
Mother Tongue	25
Language Spoken Most Often at Home	26
First Official Language Spoken	26
Place of Birth	27
Generation Status	28
EDUCATION PROFILE	
Highest Level of Schooling	29
Major Field of Study	30

TABLE OF CONTENTS CONT'D

LABOUR PROFILE

Labour Force Activity	31
Class of Worker	31
Labour Force Population	32
Place of Work	33
Labour Force by Industry	33
Labour Force by Occupation	34

INCOME PROFILE

Income of Individuals	35
Income of Economic Families	36
Prevalence of Low Income	37
Income of Households	38
Median Employment Income of Individuals	39
Employment Income as a Percentage of Total Income	40
Self-employment Income as a Percentage of Employment Income	41
Economic Dependency Ratio: Social Assistance	42
Economic Dependency Ratio: Employment Insurance	43

INDUSTRY PROFILE

Location Counts, Total Business Locations	44
Location Counts, Small Business Locations	44
Location Counts, Medium Business Locations	45
Location Counts, Large Business Locations	45

APPENDICES

Appendix A - Census	46-47
Appendix B - National Household Survey	48-51
Appendix C - Small Business and Administrative Data (SAAD)	52
Appendix D - Canadian Business Patterns	53

INTRODUCTION

Presented within this document are statistical tables and charts on the demographics, economic activities and social characteristics of the area serviced by a Community Futures Development Corporation (CFDC) in Ontario. The data was prepared for FedNor/Industry Canada by Statistics Canada to assist CFDCs in their economic development activities.

Three sources were used to construct the Socio-economic Profile. Data from the 2011 Census of Population and 2011 National Household Survey provides information on a variety of socio-economic topics including demographics, labour, and income while data from the 2001 and 2006 Censuses of Population are included to provide historical comparisons where appropriate. Additional details are provided by the inclusion of data on migration, and income from the Small Area and Administrative Data Division. Data adapted from the Canadian Business Patterns publication provides counts of active business locations by industry and employee size range. For each data source, smaller units are combined to approximate the geographic extent serviced by the Community Futures Development Corporation (CFDC). The most recent statistics available from each source during profile construction are presented.

Appendices included at the end of the profile provide information on the concepts and variables presented in this document. For additional information, please consult the Statistics Canada website at www.statcan.gc.ca.

Northeastern Region Community Futures Development Corporation

GNR = 34.8 %

The boundaries used for this project is based in part upon information supplied to Statistics Canada by FedNor in 2004 for the production of data for the 2001 Census cycle. Adjustments have been made to the boundaries to account for changes in the Statistics Canada's geographic base for the 2006 and 2011 Census years.

For 2011, Census data has been produced based upon aggregations of Statistics Canada's block-face representative points. All data is produced and provided within Statistics Canada's data quality and confidentiality standards.

Taxfiler data used in this report is based upon aggregations of postal codes falling within each geographic region. For consistency, data for current and historical years are based upon the 2011 Postal Code Conversion File containing postal codes up to June 2013.

POSTAL CODE VALIDATION DISCLAIMER:

Statistics Canada makes no representation or warranty as to, or validation of, the accuracy of any Postal Code^{OM} data submitted to Statistics Canada.

The Canadian Business Patterns data contained in this report is based upon aggregations of Census Subdivisions falling completely or partially within the CFDC area.

For more information on the geographic terms used here please see Statistics Canada Illustrated Glossary at:

<http://www.statcan.gc.ca/pub/92-195-x/92-195-x2011001-eng.htm>

List of Community Futures Development Corporations (CFDC's)

1. Community Development Corporation of Sault Ste. Marie and Area
2. East Algoma Community Futures Development Corporation
3. Economic Partners – Sudbury East/West Nipissing Inc
4. Kirkland and District Community Development Corporation
5. Muskoka Development Corporation
6. NECO Community Futures Development Corporation
7. Nord-Aski Regional Economic Development Corporation
8. North Claybelt Community Futures Development Corporation
9. Parry Sound Community Business and Development Centre Inc
10. South Temiskaming Community Futures Development Corporation
11. Superior East Community Futures Development Corporation
12. The Venture Centre
13. Wakenagun Community Futures Development Corporation
14. Waubetek Business Development Corporation
15. Lacloche Manitoulin Business Assistance Corporation

Executive Summary

Demography

The population of the area serviced by the Northeastern Region Community Futures Development Corporation (hereafter referred to as the Northeastern Region) increased by 18,400 people to 461,760 between 2006 and 2011. This represents an overall change of 4.2% during this time period. Children aged 0-14 decreased by 4.5% between 2006 and 2011, while the senior population aged 65 and over increased by 18.2%. The working age population (aged 25-64) comprised 54.1% of the total population in 2011.

With reference to migration, of the ten Census Divisions in the Northeastern Region seven experienced a net out-migration between 2006-2007 and 2010-2011. The remaining three Census Divisions; Manitoulin District, Parry Sound District, and Muskoka District Municipality, all experienced a net in-migration during the same time period.

The 2011 Census counted 138,070 census families in private households in the area serviced by Northeastern Region, an increase from 133,980 in 2006. In 2011, lone-parent families accounted for 15.5% of all census families in the Northeastern Region area, compared to 16.7% for Ontario.

Ethno-cultural

In 2011, 76.7% of respondents reported English, 17.6% reported French and 5.8% reported a non-official language as their mother tongue among those providing a single response in the area serviced by the Northeastern Region.

In the Northeastern Region area, English was reported as the language spoken most often at home by 87.1% of respondents, while French was reported by 11.1% and non-official languages were reported by 1.8% of respondents.

The Aboriginal Identity population comprised 11.1% of the total population of the area serviced by the Northeastern Region, which is higher than 2.4% reported for Ontario as a whole.

Within the Northeastern Region area, 1.5% of the population was a member of a visible minority group in 2011.

5.6% of the population of the area serviced by the Northeastern Region are immigrants. 0.3% of the population are recent immigrants, and the most common place of birth reported for this group was Americas.

Executive Summary Cont'd

Education

In area serviced by the Northeastern Region, 49.1% of the population aged 15 years and over reported having a postsecondary certificate, diploma or degree. 46.3% reported having a college, CEGEP or other non-university certificate or diploma as their highest certificate, diploma or degree, while 23.6% have an apprenticeship or trade certificate or diploma and 25.1% reported having a university certificate, diploma or degree at bachelor level or above. In comparison, the proportions for Ontario were 36.2% for a college, CEGEP, or other non-university diploma or certificate, 13.5% for an apprenticeship or trades certificate or diploma and 42.8% for a university certificate, diploma or degree at bachelor level or above.

Among the population 15 years and over with post-secondary qualifications in the area serviced by the Northeastern Region, the two most common fields of study for males were Architecture, engineering, and related technologies (46,490); and Business, management and public administration (10,195). For females, the two most common fields of study were Health and related fields (27,680); and Business, management and public administration (22,690).

Labour

According to the 2011 National Household Survey, the labour force participation rate for the population 15 years and over was 58.8% for the area serviced by the Northeastern Region as compared to 65.5% for Ontario. The employment rate for the area was 53.1% and the unemployment rate was 9.8%, compared to the employment rate of 60.1% and unemployment rate of 8.3% for Ontario. Among the population 15 years of age and over in the labour force in the Northeastern Region area, 9.7% were self-employed. This is comparable to the proportion of 10.6% in the province of Ontario.

In 2011, "Health care and social assistance" and "Retail Trade" were the most commonly reported industries by those in the labour force in the area serviced by the Northeastern Region. In Ontario, the most commonly reported industries were "Retail Trade" and "Manufacturing".

In the area serviced by the Northeastern Region, the most commonly reported occupational groups were "Sales and service occupations" and "Trades, transport and equipment operators and related occupations".

Income

According to the National Household Survey, in 2010 the median before-tax income for males in the area serviced by the Northeastern Region was \$35,677, which was lower than the provincial median of \$36,971. Within the Northeastern Region area, the median before-tax income for females was \$23,006 which was lower than the median income of \$25,412 for Ontario.

Executive Summary Cont'd

Income continued

The median before-tax household income for all private households in 2010 was \$55,590 for the area serviced by the Northeastern Region compared to \$66,358 for Ontario. The median after-tax household income in the Northeastern Region area was \$50,220 in 2010 compared to \$58,717 in Ontario.

The prevalence of low income, measured using the after-tax low income measure, among males in private households in the area serviced by the Northeastern Region was 12.6% in 2010 which is lower than the rate of 13.2% in Ontario. The number of males in low income (27,275) was lower than the number of females (33,190) and represented a lower percentage of the population living in low income within the area serviced by the CFDC. In Ontario the prevalence of low income, measured using the after-tax low income measure, among females in private households was 14.5% in 2010 which is lower than the rate of 15.1% in the Northeastern Region.

Self-employment Income as a percentage of Employment Income changed from 6.2% in 2005 to 5.1% in 2010. For Ontario, the rate went from 7.6% in 2005 to 7.0% in 2010.

In the Northeastern Region area, the "Economic Dependency Ratio: Social Assistance" went from 2.6 in 2005 to 2.8 in 2010 while the Ontario rate went from 1.3 to 1.5. The "Economic Dependency Ratio: Employment Insurance" increased from 2.3 in 2005 to 3.4 in 2010 in the Northeastern Region. In comparison, the Ontario rate went from 1.4 in 2005 to 2.0 in 2010.

Industry

In the area serviced by the Northeastern Region, the most common industry to which business locations were classified in 2012 was Construction, accounting for 4,208 of the 28,585 total locations. In Ontario it was Professional, Scientific and Technical Services.

In 2012 there were 27,909 small sized business locations in the area serviced by the Northeastern Region. In this CFDC area, the top three industries for this category of business location were: Construction (4,161), Retail Trade (3,498), and Real Estate and Rental and Leasing (2,991). In comparison, the top three industries in Ontario were: Professional, Scientific and Technical Services (135,414), Real Estate and Rental and Leasing (105,577) and Construction (100,774).

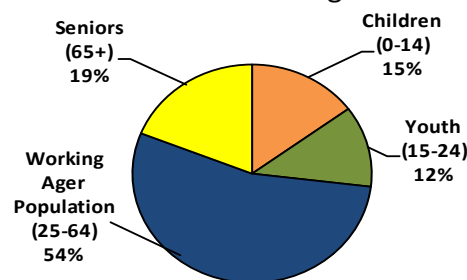
There were 566 medium sized business locations in the area serviced by the Northeastern Region in 2012. In this CFDC area, the top industries for this location category were: Retail Trade (109), Health Care and Social Assistance (89), and Accommodation and Food Services (70). In Ontario, the top three industries were: Retail Trade (2,747), Manufacturing (2,347) and Accommodation and Food Services (2,113).

There were 110 large sized business locations in the area serviced by the Northeastern Region in 2012. In this CFDC area, the top industries for this location category were: Health Care and Social Assistance (23), Educational Services (16), and Manufacturing (14). In Ontario, the top three industries in this category were: Manufacturing (645), Health Care and Social Assistance (423), and Retail Trade (355).

Population by Age Group and Population Change - Northeastern Region

	2001	2006	2011	% Change 2001-2006	% Change 2006-2011
Total	443,690	443,360	461,760	-0.1	4.2
Children (0-14)	83,605	72,330	69,045	-13.5	-4.5
Youth (15-24)	56,210	55,820	55,160	-0.7	-1.2
Working age population (25-64)	238,030	240,900	249,735	1.2	3.7
Seniors (65+)	65,820	74,295	87,795	12.9	18.2

Population by Age Group, 2011
Northeastern Region



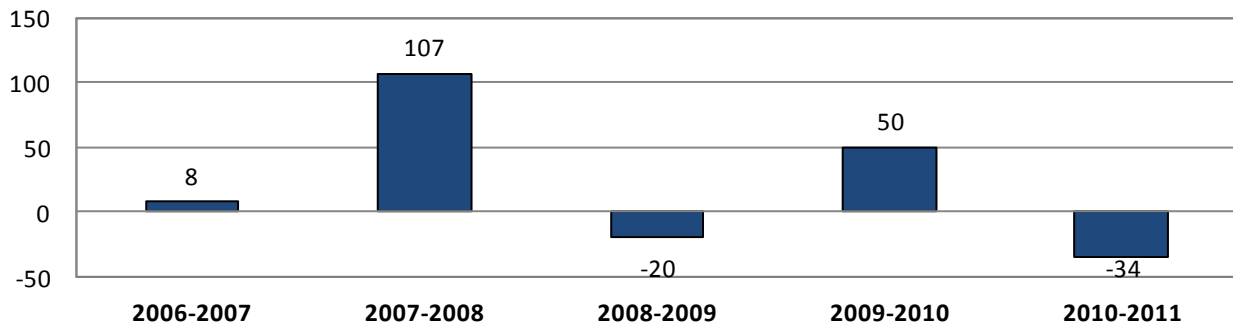
Population by Age Group, 2011 - Northeastern Region

	Total		Male		Female	
	Number	%	Number	%	Number	%
Total - Age	461,760	100.0	227,895	100.0	233,860	100.0
0-4	21,915	4.7	11,195	4.9	10,720	4.6
5-9	21,920	4.7	11,100	4.9	10,830	4.6
10-14	25,210	5.5	13,065	5.7	12,145	5.2
15-19	29,100	6.3	14,985	6.6	14,115	6.0
20-24	26,060	5.6	13,430	5.9	12,630	5.4
25-29	23,590	5.1	11,740	5.2	11,840	5.1
30-34	22,935	5.0	11,210	4.9	11,725	5.0
35-39	24,435	5.3	12,020	5.3	12,405	5.3
40-44	28,040	6.1	13,760	6.0	14,280	6.1
45-49	37,235	8.1	18,235	8.0	19,005	8.1
50-54	40,715	8.8	20,140	8.8	20,570	8.8
55-59	37,630	8.1	18,725	8.2	18,910	8.1
60-64	35,155	7.6	17,565	7.7	17,590	7.5
65-69	27,215	5.9	13,535	5.9	13,680	5.8
70-74	21,700	4.7	10,515	4.6	11,190	4.8
75-80	17,035	3.7	8,210	3.6	8,830	3.8
80-84	12,090	2.6	5,330	2.3	6,765	2.9
85+	9,755	2.1	3,125	1.4	6,635	2.8
Median age	46.2	N/A	45.4	N/A	46.8	N/A

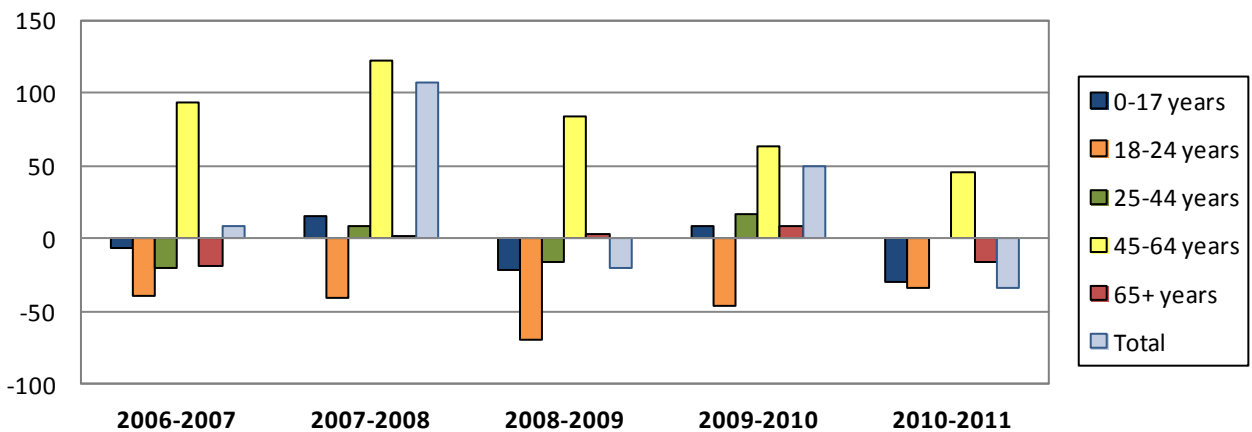
Source: Statistics Canada, special tabulations, unpublished data, 2001, 2006, and 2011 Censuses of Population

Migrants - Manitoulin District			
	In-Migrants	Out-Migrants	Net-Migrants
2006-2007	613	605	8
2007-2008	637	530	107
2008-2009	535	555	-20
2009-2010	589	539	50
2010-2011	480	514	-34
2006-2011	2,854	2,743	111

Net-Migrants
Manitoulin District



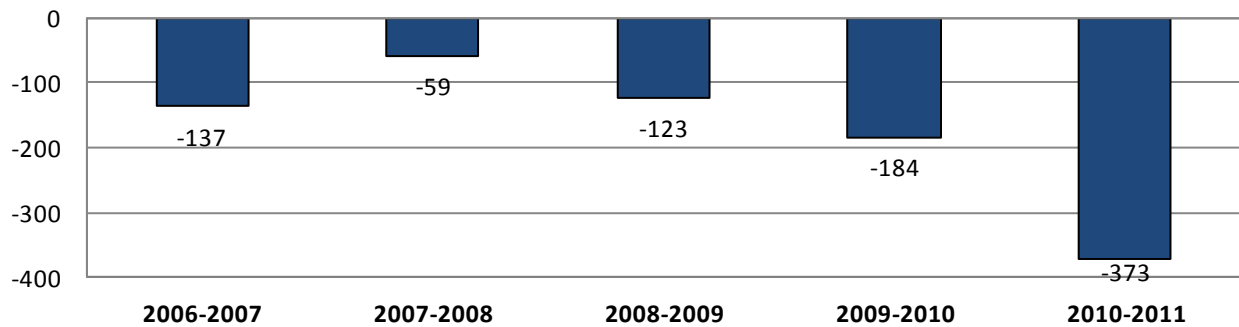
Net-Migrants by Age Group
Manitoulin District



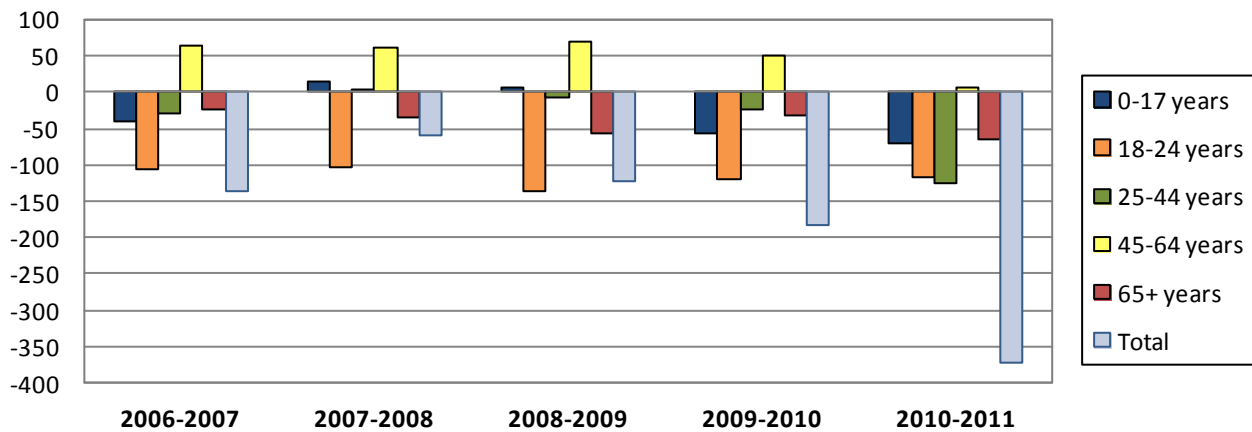
Source: Statistics Canada, Income Statistics Division, Migration Estimates by Census Division, 91C0025

Migrants - Sudbury District			
	In-Migrants	Out-Migrants	Net-Migrants
2006-2007	1,307	1,444	-137
2007-2008	1,321	1,380	-59
2008-2009	1,194	1,317	-123
2009-2010	1,076	1,260	-184
2010-2011	977	1,350	-373
2006-2011	5,875	6,751	-876

Net-Migrants
Sudbury District



Net-Migrants by Age Group
Sudbury District



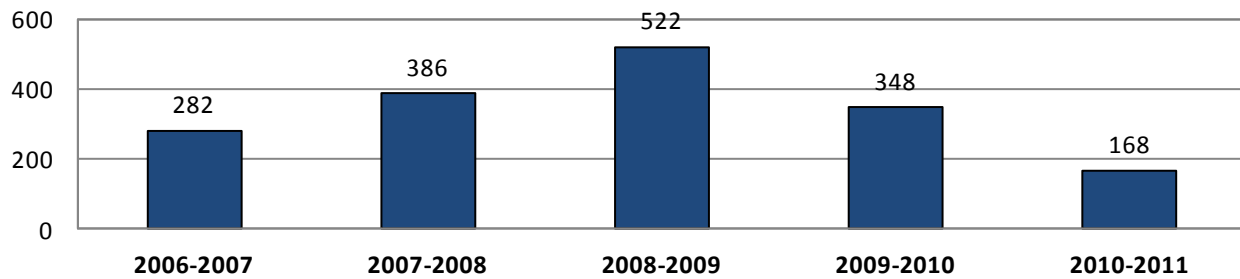
Source: Statistics Canada, Income Statistics Division, Migration Estimates by Census Division, 91C0025

Migrants - Muskoka District Municipality

	In-Migrants	Out-Migrants	Net-Migrants
2006-2007	2,531	2,249	282
2007-2008	2,747	2,361	386
2008-2009	2,753	2,231	522
2009-2010	2,760	2,412	348
2010-2011	2,426	2,258	168
2006-2011	13,217	11,511	1,706

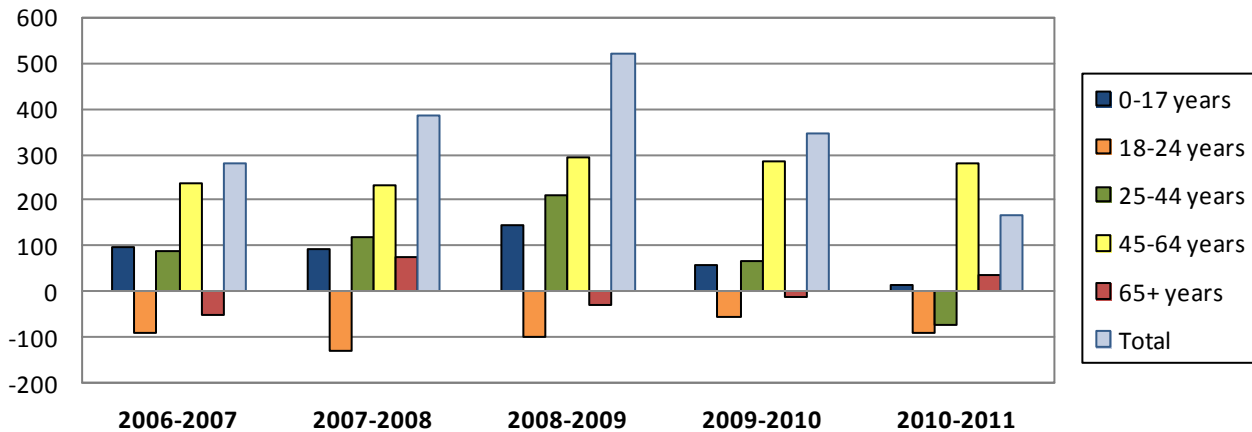
Net-Migrants

Muskoka District Municipality



Net-Migrants by Age Group

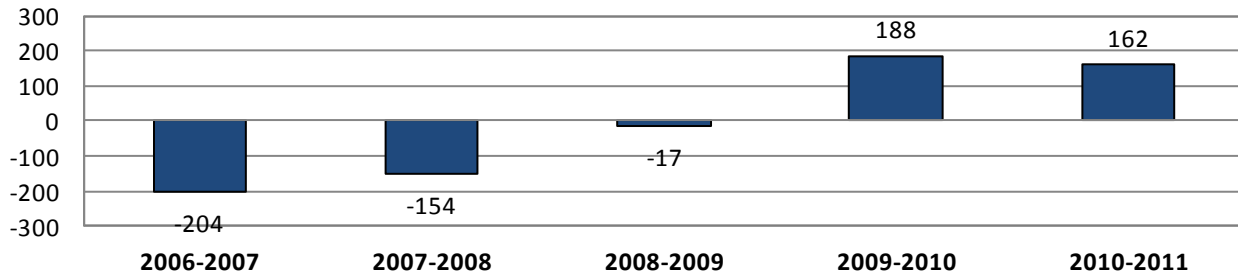
Muskoka District Municipality



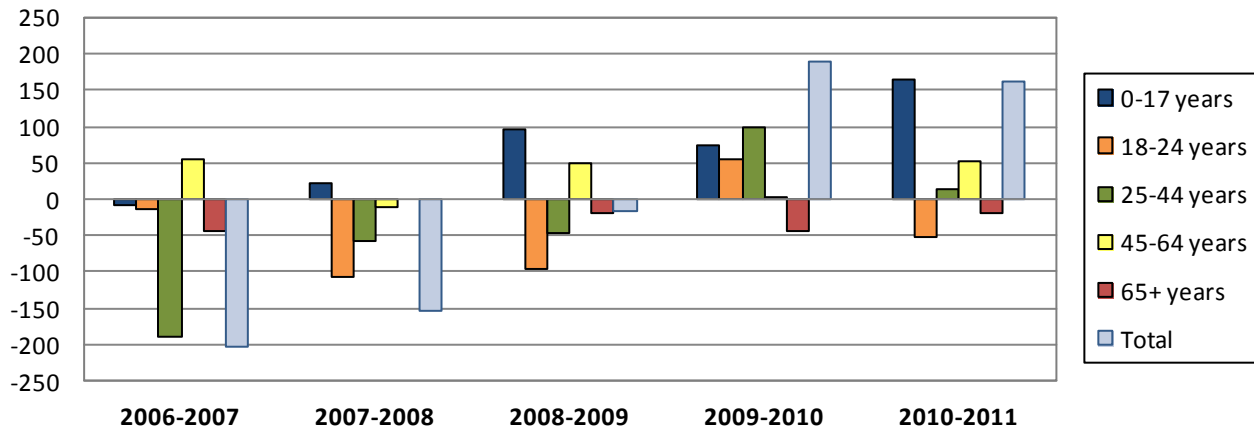
Source: Statistics Canada, Income Statistics Division, Migration Estimates by Census Division, 91C0025

Migrants - Nipissing District			
	In-Migrants	Out-Migrants	Net-Migrants
2006-2007	3,500	3,704	-204
2007-2008	3,763	3,917	-154
2008-2009	3,344	3,361	-17
2009-2010	3,451	3,263	188
2010-2011	3,484	3,322	162
2006-2011	17,542	17,567	-25

Net-Migrants
Nipissing District



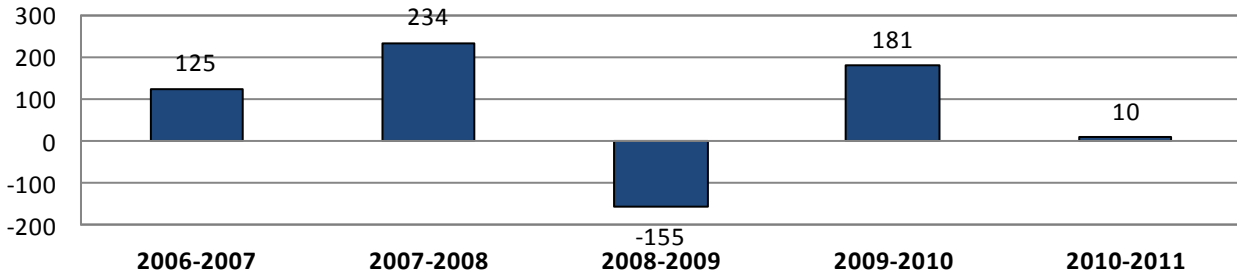
Net-Migrants by Age Group
Nipissing District



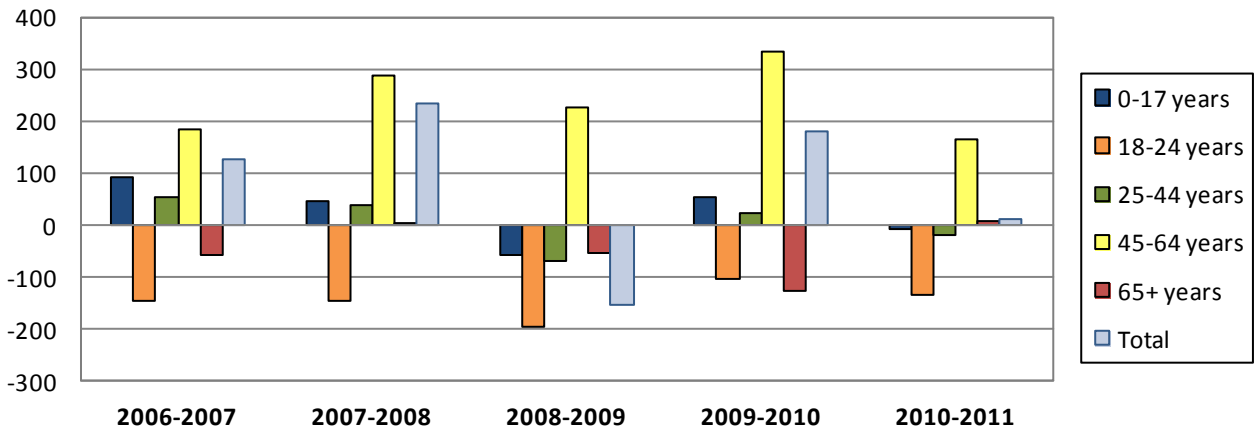
Source: Statistics Canada, Income Statistics Division, Migration Estimates by Census Division, 91C0025

Migrants - Parry Sound District			
	In-Migrants	Out-Migrants	Net-Migrants
2006-2007	2,171	2,046	125
2007-2008	2,278	2,044	234
2008-2009	1,992	2,147	-155
2009-2010	2,258	2,077	181
2010-2011	1,985	1,975	10
2006-2011	10,684	10,289	395

Net-Migrants
Parry Sound District



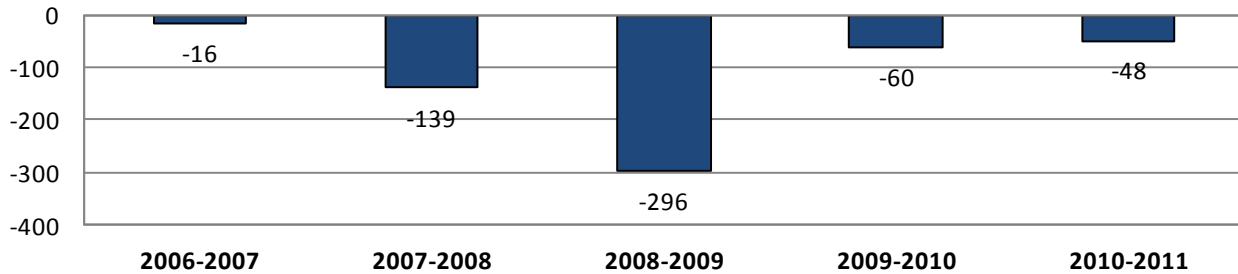
Net-Migrants by Age Group
Parry Sound District



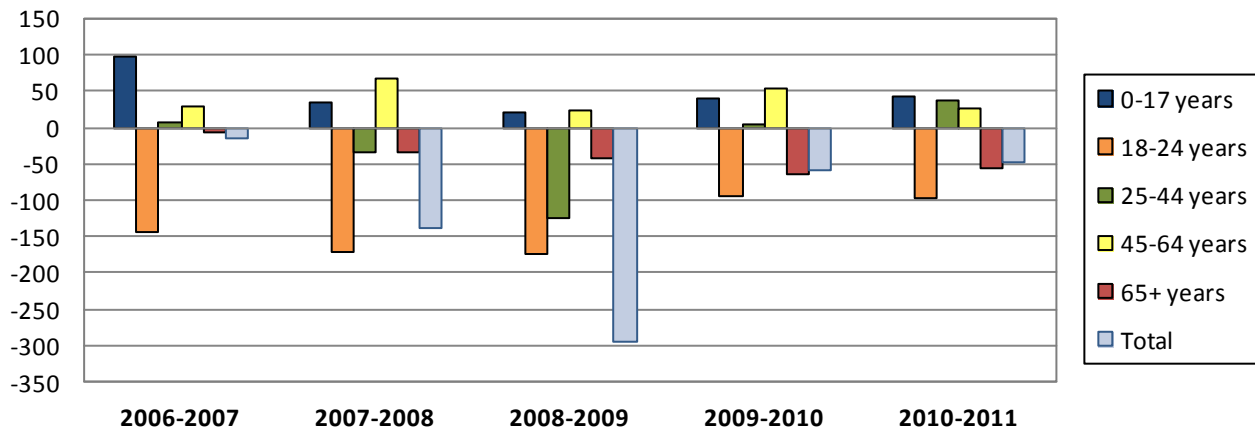
Source: Statistics Canada, Income Statistics Division, Migration Estimates by Census Division, 91C0025

Migrants - Temiskaming District			
	In-Migrants	Out-Migrants	Net-Migrants
2006-2007	88	1,272	-16
2007-2008	72	1,310	-139
2008-2009	56	1,287	-296
2009-2010	65	1,148	-60
2010-2011	83	1,140	-48
2006-2011	364	6,157	-559

Net-Migrants
Temiskaming District



Net-Migrants by Age Group
Temiskaming District

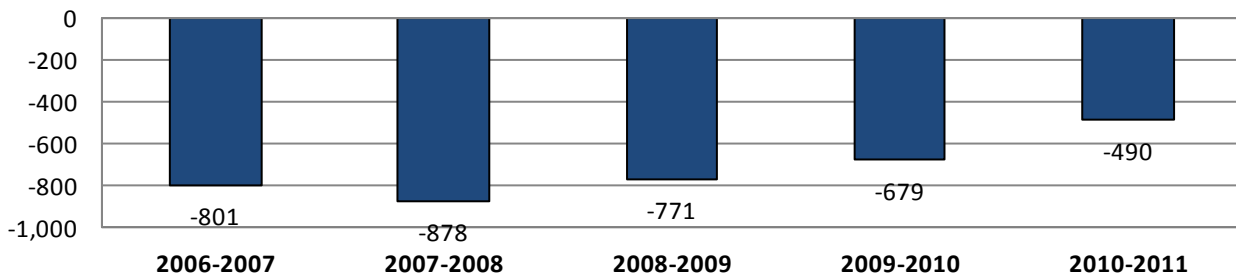


Source: Statistics Canada, Income Statistics Division, Migration Estimates by Census Division, 91C0025

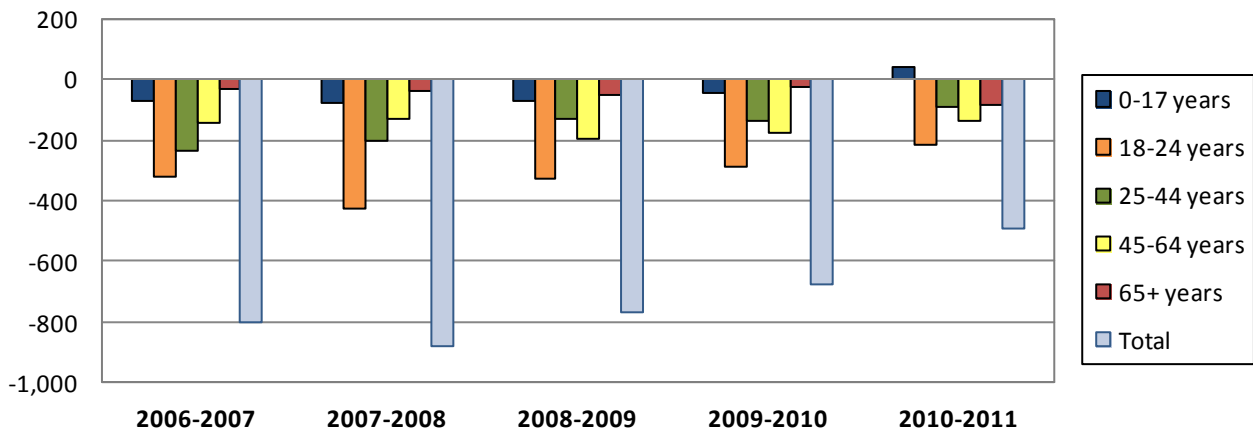
Migrants - Cochrane District

	In-Migrants	Out-Migrants	Net-Migrants
2006-2007	2,176	2,977	-801
2007-2008	2,118	2,996	-878
2008-2009	1,962	134	-771
2009-2010	1,946	128	-679
2010-2011	2,004	167	-490
2006-2011	10,206	709	-3,619

Net-Migrants
Cochrane District



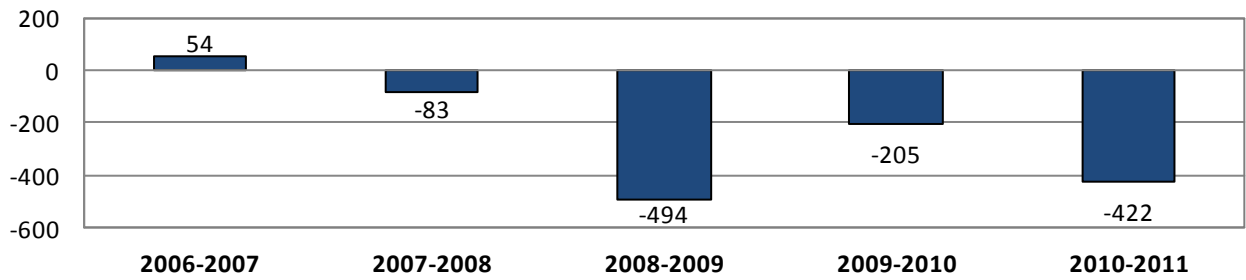
Net-Migrants by Age Group
Cochrane District



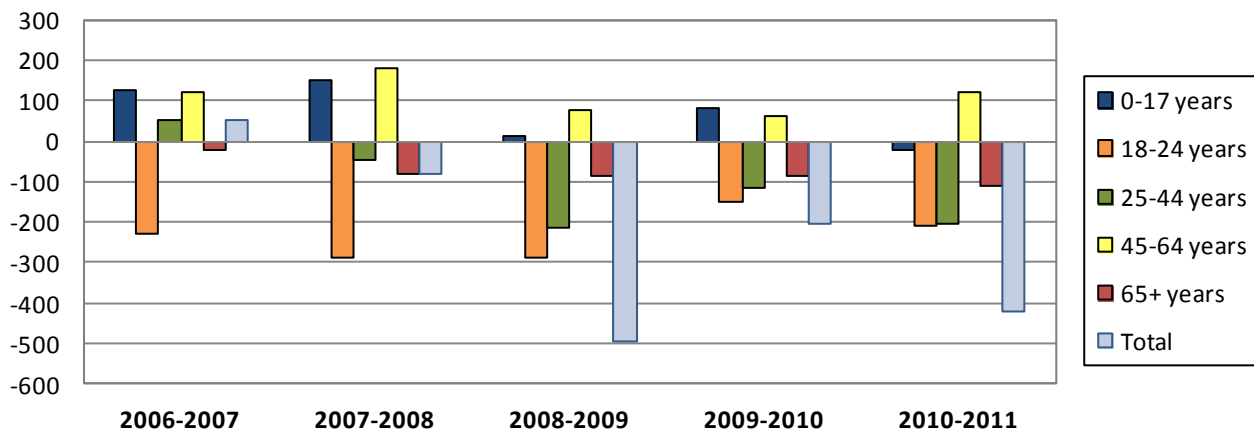
Source: Statistics Canada, Income Statistics Division, Migration Estimates by Census Division, 91C0025

Migrants - Algoma District			
	In-Migrants	Out-Migrants	Net-Migrants
2006-2007	3,220	3,166	54
2007-2008	2,979	3,062	-83
2008-2009	2,647	3,141	-494
2009-2010	2,676	2,881	-205
2010-2011	2,438	2,860	-422
2006-2011	13,960	15,110	-1,150

Net-Migrants
Algoma District



Net-Migrants by Age Group
Algoma District

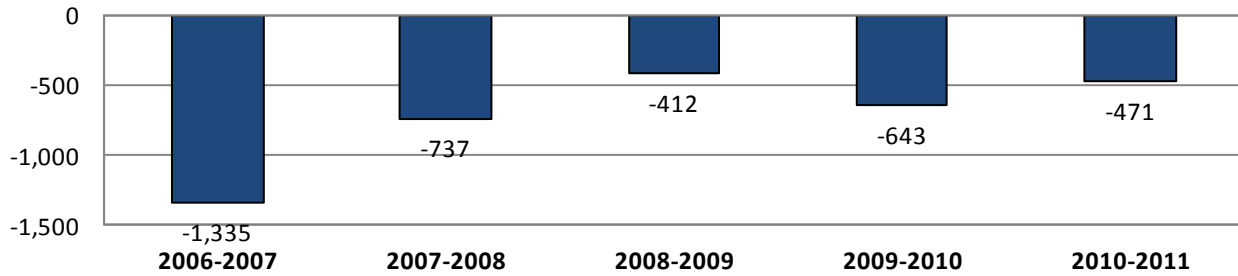


Source: Statistics Canada, Income Statistics Division, Migration Estimates by Census Division, 91C0025

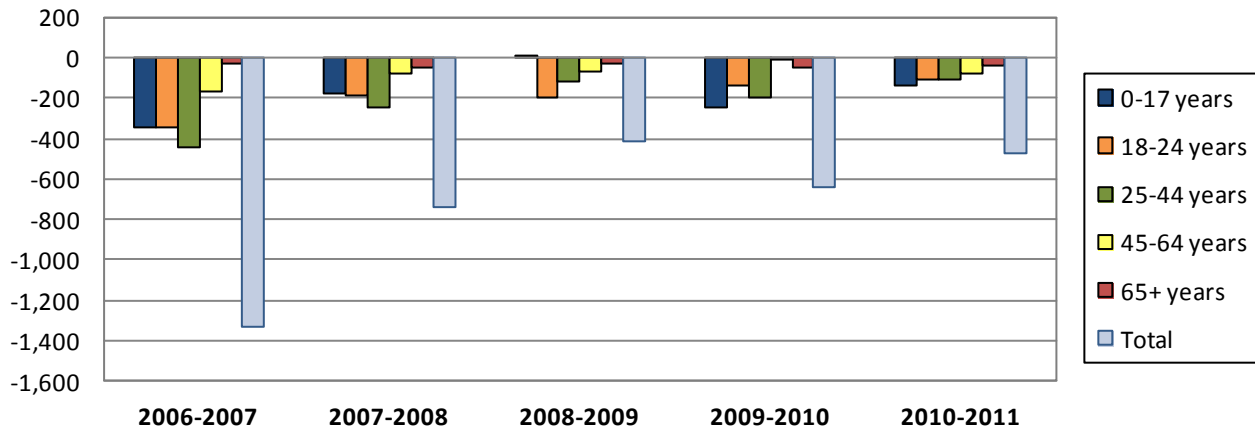
Migrants - Kenora District

	In-Migrants	Out-Migrants	Net-Migrants
2006-2007	1,691	3,026	-1,335
2007-2008	1,920	2,657	-737
2008-2009	1,951	2,363	-412
2009-2010	1,795	2,438	-643
2010-2011	1,756	2,227	-471
2006-2011	9,113	12,711	-3,598

Net-Migrants
Kenora District



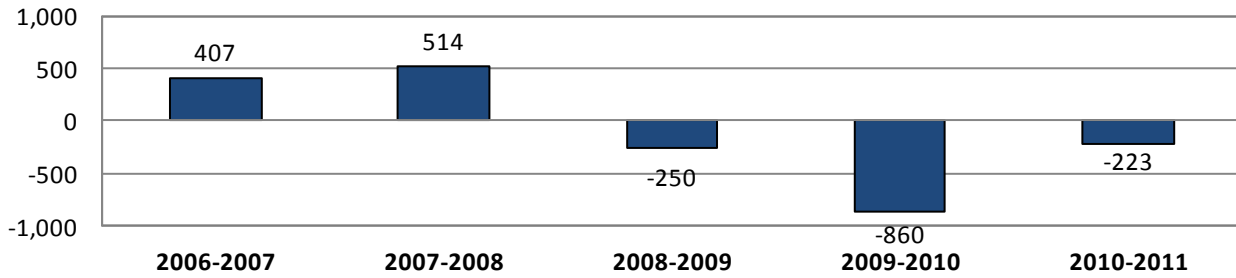
Net-Migrants by Age Group
Kenora District



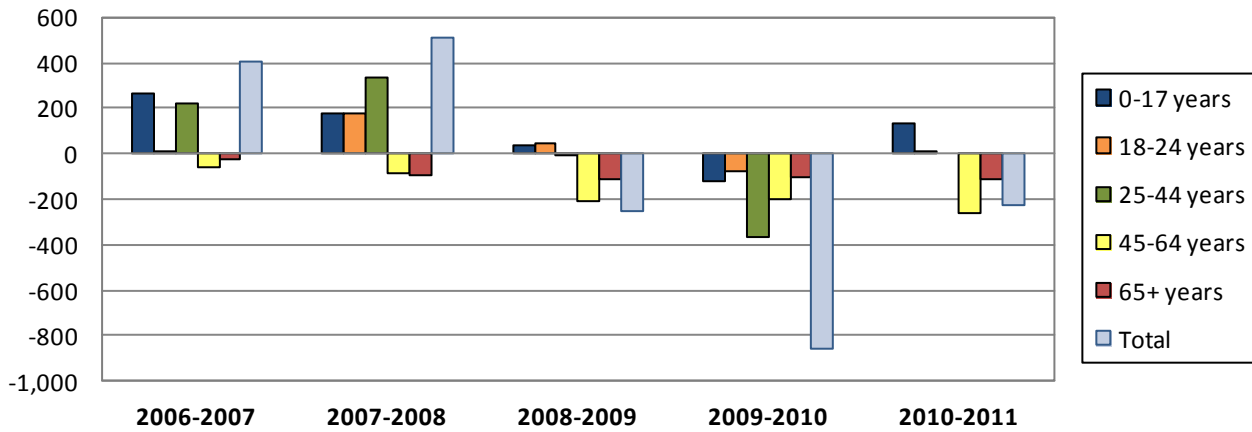
Source: Statistics Canada, Income Statistics Division, Migration Estimates by Census Division, 91C0025

Migrants - Greater Sudbury District			
	In-Migrants	Out-Migrants	Net-Migrants
2006-2007	5,106	4,699	407
2007-2008	5,308	4,794	514
2008-2009	4,458	4,708	-250
2009-2010	4,245	5,105	-860
2010-2011	4,354	4,577	-223
2006-2011	23,471	23,883	-412

Net-Migrants
Greater Sudbury District



Net-Migrants by Age Group
Greater Sudbury District

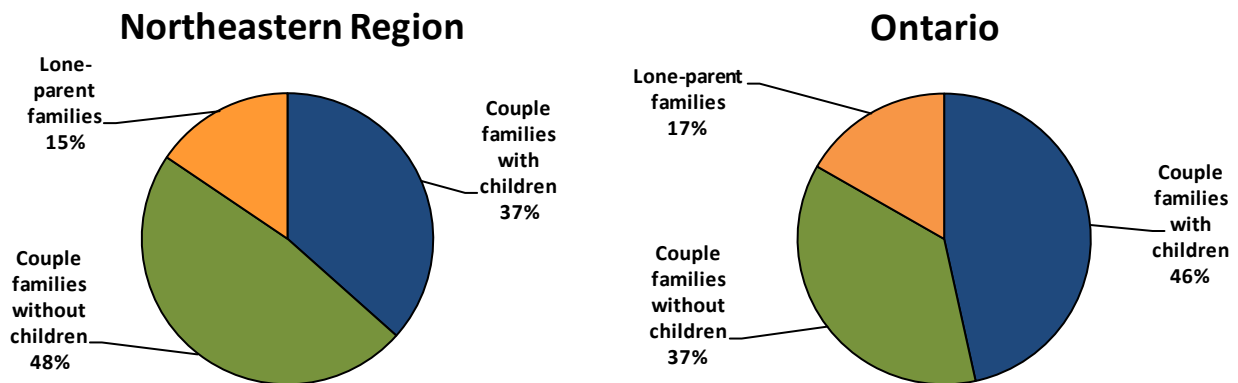


Source: Statistics Canada, Income Statistics Division, Migration Estimates by Census Division, 91C0025

Census Family by Family Structure - Northeastern Region

	2001		2006		2011	
	Number	%	Number	%	Number	%
Total number of census families	132,535	100.0	133,980	100.0	138,070	100.0
Couple families with children	57,810	43.6	52,875	39.5	50,505	36.6
Couple families without children	55,445	41.8	61,500	45.9	66,105	47.9
Lone-parent families	19,275	14.5	19,595	14.6	21,460	15.5

Census Families by Family Structure, 2011



Private Households by Household Size, 2011 - Northeastern Region

	Number	%
Total	196,080	100.0
1 person	54,955	28.0
2 persons	77,405	39.5
3 persons	28,515	14.5
4 persons	23,845	12.2
5 persons	8,000	4.1
6 or more persons	3,355	1.7
Average number of persons in private households	2.3	N/A

Source: Statistics Canada, special tabulations, unpublished data, 2001, 2006, and 2011 Censuses of Population

Private Households by Household Type, 2011 - Northeastern Region

	Number	%
Total	196,075	100.0
One-family households	126,380	64.5
Other family households	9,155	4.7
Non-family households	60,545	30.9

Total Children in Census Families in Private Households, 2011

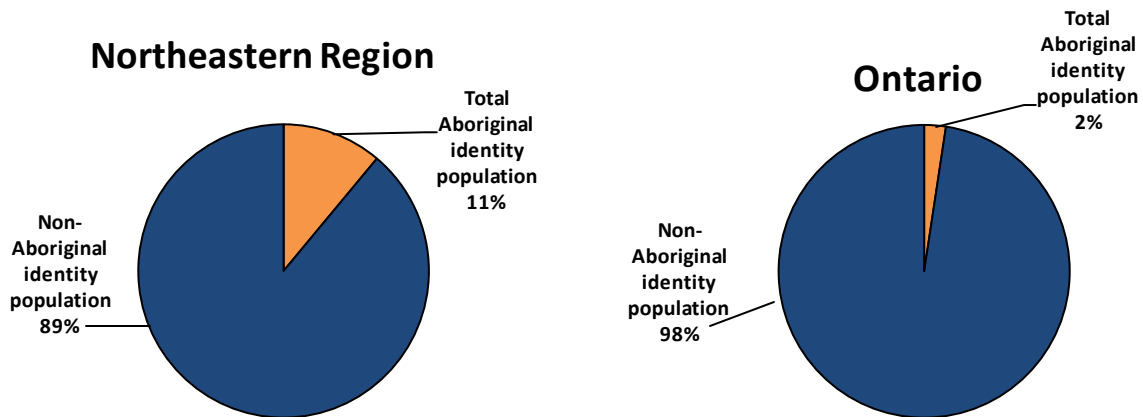
	Northeastern Region	Ontario
Total	122,900	4,083,925
Under 6 years	26,010	839,960
6 to 14 years	42,175	1,323,750
15 to 17 years	16,600	496,005
18 to 24 years	25,020	888,980
25 years and over	13,095	535,230
Average number of children at home per census family	0.9	1.1
Average number of persons per census family	2.7	3.0

Source: Statistics Canada, special tabulation, unpublished data, 2011 Census of Population

Total Population by Aboriginal Identity, 2011

	Northeastern Region		Ontario	
	Number	%	Number	%
Total population	451,335	100.0	12,651,790	100.0
Total Aboriginal identity population	49,885	11.1	301,430	2.4
Non-Aboriginal identity population	401,455	88.9	12,350,360	97.6

Aboriginal Identity, 2011



Total Population by Visible Minority Group, 2011

	Northeastern Region		Ontario	
	Number	%	Number	%
Total population by visible minority groups	451,335	100.0	12,651,795	100.0
Total visible minority population	6,755	1.5	3,279,565	25.9
Not a visible minority	444,585	98.5	9,372,225	74.1

Source: Statistics Canada, special tabulations, unpublished data, 2011 National Household Survey

Top 10 Ethnic Origins, Total Responses, 2011

	Northeastern Region	Ontario
Total population	451,340	12,651,795
Canadian	171,960	2,946,095
English	135,725	2,925,660
French	127,930	1,362,320
Irish	95,765	2,069,110
Scottish	93,010	2,080,545
German	47,210	1,154,550
First Nations (North American Indian)	45,180	345,875
Italian	29,220	883,990
Dutch	15,150	508,595
Métis	14,760	97,040

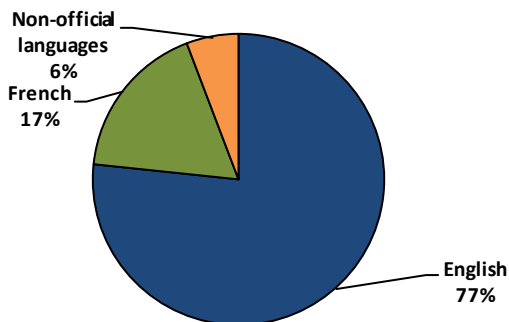
Source: Statistics Canada, special tabulations, unpublished data, 2011 National Household Survey

Mother Tongue, Single Response

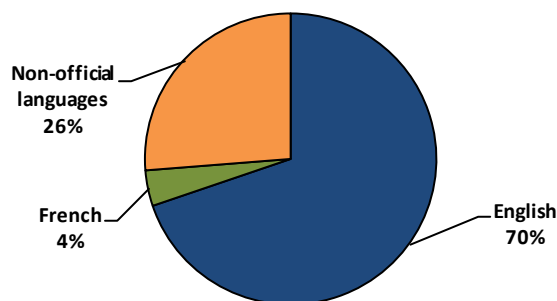
2001				
	Northeastern Region		Ontario	
	Number	%	Number	%
Total	437,375	100.0	11,122,935	100.0
English	321,725	73.6	7,965,225	71.6
French	87,635	20.0	485,630	4.4
Non-official languages	28,015	6.4	2,672,085	24.0
2006				
	Northeastern Region		Ontario	
	Number	%	Number	%
Total	438,740	100.0	11,853,565	100.0
English	326,040	74.3	8,230,705	69.4
French	82,780	18.9	488,815	4.1
Non-official languages	29,920	6.8	3,134,045	26.4
2011				
	Northeastern Region		Ontario	
	Number	%	Number	%
Total	449,460	100.0	12,434,775	100.0
English	344,565	76.7	8,677,040	69.8
French	78,920	17.6	493,295	4.0
Non-official languages	25,975	5.8	3,264,440	26.3

Mother Tongue - Single Response, 2011

Northeastern Region



Ontario

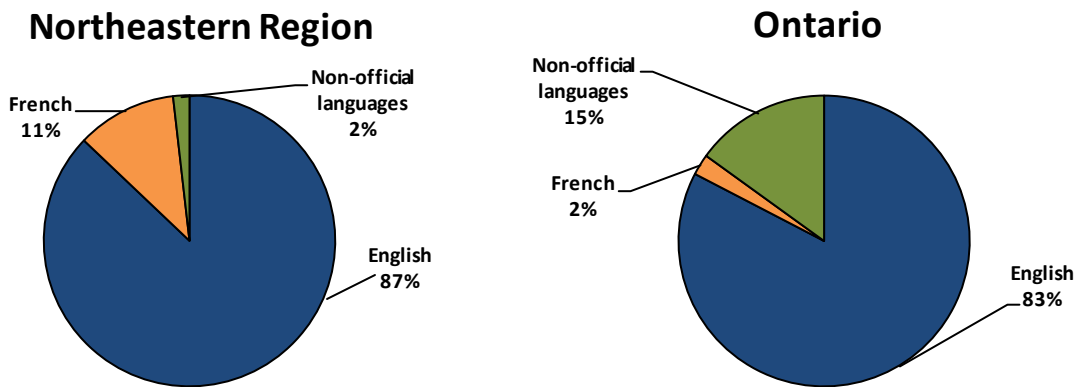


Source: Statistics Canada, special tabulations, unpublished data, 2001, 2006, and 2011 Censuses of Population

Languages Spoken Most Often at Home, Single Response, 2011

	Northeastern Region	Ontario
Total	448,955	12,156,790
English	391,045	10,044,810
French	49,785	284,115
Non-official languages	8,125	1,827,870

Languages Spoken Most Often at Home – Single Response, 2011



First Official Language Spoken, 2011

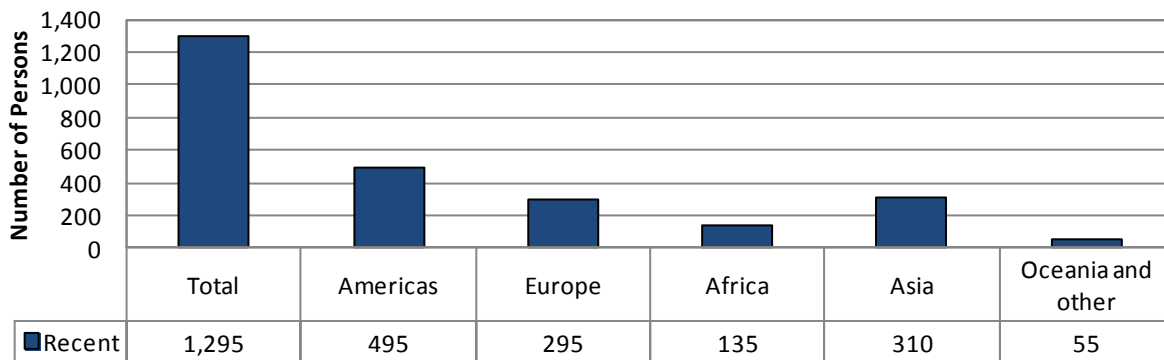
	Northeastern Region		Ontario	
	Number	%	Number	%
Total population	455,135	100.0	12,722,065	100.0
English	375,745	82.6	11,844,580	93.1
French	77,455	17.0	500,270	3.9
English and French	1,130	0.2	84,230	0.7
Neither English nor French	795	0.2	292,980	2.3

Source: Statistics Canada, special tabulations, unpublished data, 2011 Census of Population

Place of Birth of Total and Recent Immigrants in Private Households, 2011

		Northeastern Region		Ontario	
		Number	%	Number	%
Total	Total	25,195	100.0	3,611,365	100.0
	Recent	1,295	100.0	501,060	100.0
Americas	Total	4,610	18.3	580,045	16.1
	Recent	495	38.2	82,225	16.4
Europe	Total	17,685	70.2	1,206,005	33.4
	Recent	295	22.8	59,945	12.0
Africa	Total	530	2.1	195,900	5.4
	Recent	135	10.4	40,950	8.2
Asia	Total	2,160	8.6	1,617,325	44.8
	Recent	310	23.9	316,080	63.1
Oceania and other	Total	200	0.8	12,085	0.3
	Recent	55	4.2	1,860	0.4

Place of Birth of Recent Immigrants in all Private Households, 2011
Northeastern Region



Source: Statistics Canada, special tabulations, unpublished data, 2011 National Household Survey

Generation Status				
2001 Census				
	Northeastern Region		Ontario	
	Number	%	Number	%
Total population 15 years and over	360,070	100.0	9,048,035	100.0
1st generation	28,540	7.9	2,951,230	32.6
2nd generation	49,525	13.8	1,808,580	20.0
3rd generation and over	282,005	78.3	4,288,230	47.4
2006 Census				
	Northeastern Region		Ontario	
	Number	%	Number	%
Total population 15 years and over	371,020	100.0	9,819,420	100.0
1st generation	29,260	7.9	3,340,210	34.0
2nd generation	47,810	12.9	1,912,460	19.5
3rd generation and over	293,950	79.2	4,566,750	46.5
2011 National Household Survey				
	Northeastern Region		Ontario	
	Number	%	Number	%
Total population	451,335	100.0	12,651,795	100.0
1st generation	27,215	6.0	3,779,630	29.9
2nd generation	53,920	11.9	2,849,290	22.5
3rd generation and over	370,210	82.0	6,022,870	47.6

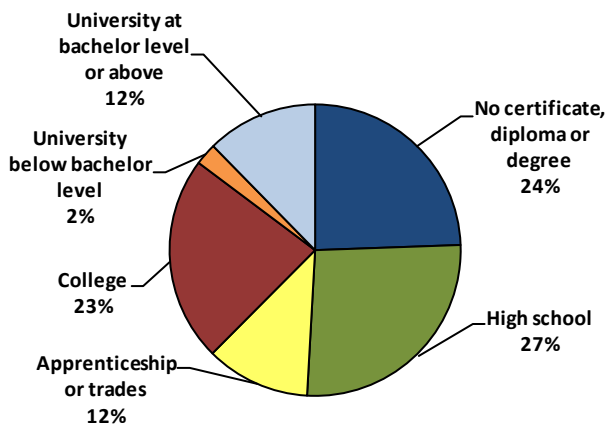
Source: Statistics Canada, special tabulations, unpublished data, 2001 and 2006 Censuses of Population, 2011 National Household Survey

Total Population 15 Years and Over By Highest Certificate, Diploma, or Degree, 2011

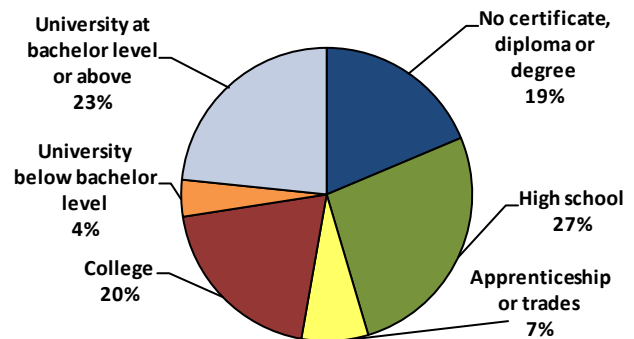
	Northeastern Region		Ontario	
	Number	%	Number	%
Total population	383,015	100.0	10,473,665	100.0
No certificate, diploma or degree	93,595	24.4	1,954,520	18.7
High school diploma or equivalent	101,300	26.4	2,801,805	26.8
Postsecondary certificate, diploma or degree	188,120	49.1	5,717,340	54.6
Apprenticeship or trades certificate or diploma	44,370	23.6	771,140	13.5
College, CEGEP or other non-university certificate or diploma	87,170	46.3	2,070,875	36.2
University certificate or diploma below bachelor level	9,300	4.9	427,145	7.5
University certificate, diploma or degree at bachelor level or above	47,280	25.1	2,448,175	42.8
Bachelor's degree	30,855	65.3	1,515,075	61.9
University certificate, diploma or degree above bachelor level	16,430	34.8	933,100	38.1

Population 15 Years and Over by Highest Certificate, Diploma or Degree, 2011

Northeastern Region



Ontario



Source: Statistics Canada, special tabulations, unpublished data, 2011 National Household Survey

**Major Field of Study for Population 15 Years and Over with
Post Secondary Qualifications, 2011**

		Northeastern Region		Ontario	
		Number	%	Number	%
Total population with post secondary qualifications - CIP 2011	Male	94,195	100.0	2,770,625	100.0
	Female	93,930	100.0	2,946,715	100.0
Education	Male	4,850	5.1	93,405	3.4
	Female	11,935	12.7	294,210	10.0
Visual and performing arts, and communications technologies	Male	1,785	1.9	104,405	3.8
	Female	2,005	2.1	117,740	4.0
Humanities	Male	2,890	3.1	133,215	4.8
	Female	3,875	4.1	214,975	7.3
Social and behavioural sciences and law	Male	4,340	4.6	233,645	8.4
	Female	12,020	12.8	448,690	15.2
Business, management and public administration	Male	10,195	10.8	494,395	17.8
	Female	22,690	24.2	728,010	24.7
Physical and life sciences and technologies	Male	2,300	2.4	116,050	4.2
	Female	1,790	1.9	113,225	3.8
Mathematics, computer and information sciences	Male	2,245	2.4	167,780	6.1
	Female	1,510	1.6	99,845	3.4
Architecture, engineering, and related technologies	Male	46,490	49.4	1,046,005	37.8
	Female	2,120	2.3	105,365	3.6
Agriculture, natural resources and conservation	Male	4,955	5.3	68,510	2.5
	Female	1,420	1.5	35,305	1.2
Health and related fields	Male	5,035	5.3	151,235	5.5
	Female	27,680	29.5	640,390	21.7
Personal, protective and transportation services	Male	9,085	9.6	161,745	5.8
	Female	6,805	7.2	147,970	5.0
Other fields of study	Male	0	0.0	230	0.0
	Female	65	0.1	980	0.0

Source: Statistics Canada, special tabulations, unpublished data, 2011 National Household Survey

Labour Force Activity for the Population 15 Years and Over

2006 Census						
	Northeastern Region			Ontario		
	Total	Male	Female	Total	Male	Female
Total population 15 years and over	371,025	181,390	189,635	9,819,420	4,744,710	5,074,710
In the labour force	221,315	116,025	105,285	6,587,575	3,437,670	3,149,905
Employed	203,495	106,555	96,935	6,164,245	3,230,050	2,934,195
Unemployed	17,820	9,465	8,345	423,335	207,620	215,710
Not in the labour force	149,710	65,365	84,345	3,231,840	1,307,035	1,924,805
Participation rate (%)	59.6	64.0	55.5	67.1	72.5	62.1
Employment rate (%)	54.8	58.7	51.1	62.8	68.1	57.8
Unemployment rate (%)	8.1	8.2	7.9	6.4	6.0	6.8
2011 National Household Survey						
	Northeastern Region			Ontario		
	Total	Male	Female	Total	Male	Female
Total population 15 years and over	383,015	188,340	194,670	10,473,665	5,064,720	5,408,950
In the labour force	225,290	116,660	108,625	6,864,985	3,542,030	3,322,960
Employed	203,305	103,830	99,480	6,297,000	3,249,165	3,047,835
Unemployed	21,980	12,835	9,150	567,985	292,860	275,120
Not in the labour force	157,720	71,675	86,050	3,608,685	1,522,690	2,085,990
Participation rate (%)	58.8	61.9	55.8	65.5	69.9	61.4
Employment rate (%)	53.1	55.1	51.1	60.1	64.2	56.3
Unemployment rate (%)	9.8	11.0	8.4	8.3	8.3	8.3

Note: Refer to Appendix A and B for information about Census and NHS

Class of Worker for the Population 15 Years and Over, 2011

	Northeastern Region		Ontario	
	Number	%	Number	%
All classes of worker	220,480	100.0	6,680,245	100.0
Employees	199,035	90.3	5,973,825	89.4
Self-employed	21,445	9.7	706,425	10.6

Source: Statistics Canada, special tabulations, unpublished data, 2006 Census of Population, 2011 National Household Survey

Total Labour Force Population Aged 15 Years and Over by Full-time or Part-time Weeks Worked, 2010 - Northeastern Region		
	Total	
	Number	%
Total	225,290	100.0
Did not work	11,115	4.9
Worked	214,175	95.1
Worked full-time	167,425	78.2
Worked part-time	46,750	21.8
Male		
	Male	
	Number	%
Total	116,660	100.0
Did not work	5,470	4.7
Worked	111,195	95.3
Worked full-time	95,445	85.8
Worked part-time	15,750	14.2
Female		
	Female	
	Number	%
Total	108,625	100.0
Did not work	5,645	5.2
Worked	102,980	94.8
Worked full-time	71,980	69.9
Worked part-time	30,995	30.1

Source: Statistics Canada, special tabulations, unpublished data, 2011 National Household Survey

Place of Work Status for the Employed Labour Force 15 Years and Over, 2011

	Northeastern Region		Ontario	
	Nombre	%	Nombre	%
Males	103,830	100.0	3,249,165	100.0
Worked at usual place	78,505	75.6	2,524,555	77.7
Worked at home	5,890	5.7	216,905	6.7
Worked outside Canada	250	0.2	21,150	0.7
No fixed workplace address	19,190	18.5	486,560	15.0
Females	99,480	100.0	3,047,835	100.0
Worked at usual place	87,710	88.2	2,646,420	86.8
Worked at home	5,625	5.7	206,895	6.8
Worked outside Canada	180	0.2	10,240	0.3
No fixed workplace address	5,960	6.0	184,280	6.0

Top 10 Industries for the Labour Force 15 Years and Over, 2011

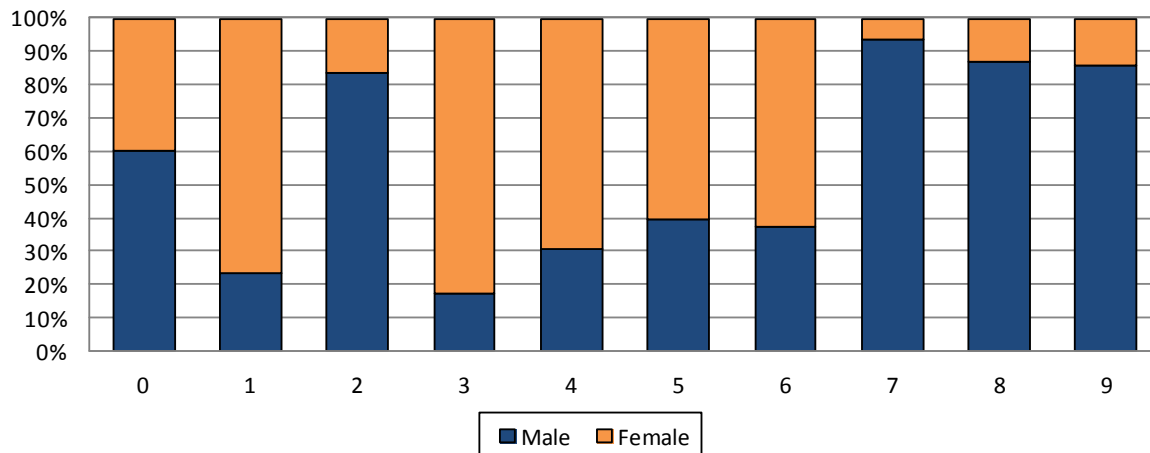
	Northeastern Region		Ontario	
	Number	%	Number	%
All industries - NAICS 2007	220,480	100.0	6,680,245	100.0
62 Health care and social assistance	30,420	13.8	692,130	10.4
44-45 Retail trade	29,425	13.3	751,205	11.2
23 Construction	19,430	8.8	417,895	6.3
91 Public administration	18,490	8.4	458,665	6.9
61 Educational services	17,140	7.8	499,690	7.5
31-33 Manufacturing	16,090	7.3	697,565	10.4
72 Accommodation and food services	15,930	7.2	417,670	6.3
48-49 Transportation and warehousing	11,040	5.0	307,405	4.6
81 Other services (except public administration)	9,720	4.4	296,345	4.4
56 Administrative and support, waste management and remediation services	9,155	4.2	309,630	4.6
All other industries	43,655	19.8	1,832,045	27.4

Source: Statistics Canada, special tabulations, unpublished data, 2011 National Household Survey

Occupation for the Labour Force 15 Years and Over, 2011

	Northeastern Region		Ontario	
	Number	%	Number	%
All occupations - NOC 2011	220,480	100.0	6,680,245	100.0
6 Sales and service occupations	53,305	24.2	1,550,260	23.2
7 Trades, transport and equipment operators and related occupations	41,920	19.0	868,515	13.0
1 Business, finance and administration occupations	30,190	13.7	1,138,325	17.0
4 Occupations in education, law and social, community and government services	27,355	12.4	801,465	12.0
0 Management occupations	20,850	9.5	770,575	11.5
3 Health occupations	15,975	7.2	392,695	5.9
2 Natural and applied sciences and related occupations	10,120	4.6	494,500	7.4
9 Occupations in manufacturing and utilities	8,740	4.0	350,680	5.2
8 Natural resources, agriculture and related production occupations	7,970	3.6	106,810	1.6
5 Occupations in art, culture, recreation and sport	4,050	1.8	206,420	3.1

Occupation by Sex, 2011
Northeastern Region



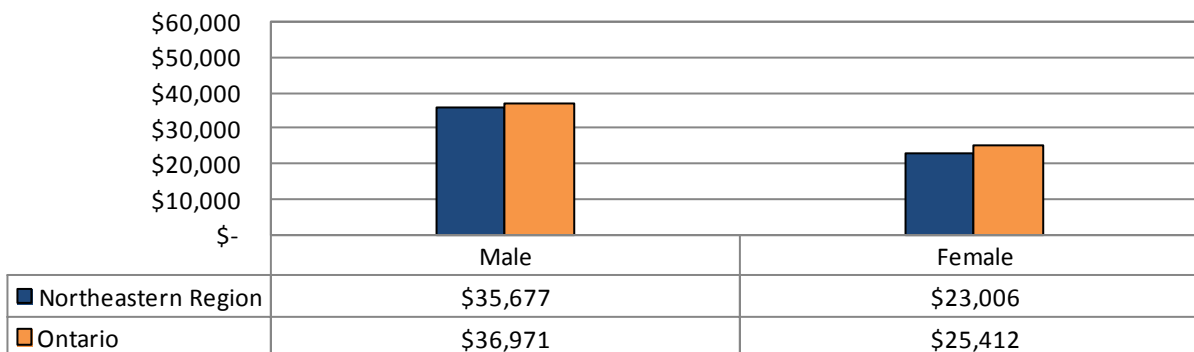
Please see table above for the corresponding occupational group names

Source: Statistics Canada, special tabulations, unpublished data, 2011 National Household Survey

**Income Distribution (Before-tax Total Income) for Individuals
15 Years and Over, 2010 - Northeastern Region**

	Male		Female	
	Number	%	Number	%
Population 15 years and over	188,340	100.0	194,675	100.0
Without income	6,600	3.5	9,680	5.0
With income	181,740	96.5	184,995	95.0
Under \$5,000	15,515	8.5	16,795	9.1
\$5,000 to \$9,999	9,715	5.3	18,395	9.9
\$10,000 to \$14,999	13,105	7.2	22,270	12.0
\$15,000 to \$19,999	13,635	7.5	22,970	12.4
\$20,000 to \$29,999	25,130	13.8	33,080	17.9
\$30,000 to \$39,999	23,580	13.0	23,540	12.7
\$40,000 to \$49,999	20,995	11.6	16,605	9.0
\$50,000 to \$59,999	16,090	8.9	10,360	5.6
\$60,000 to \$79,999	22,030	12.1	11,075	6.0
\$80,000 to \$99,999	11,465	6.3	6,800	3.7
\$100,000 and over	10,475	5.8	3,105	1.7
\$100,000 to \$124,999	5,665	3.1	1,980	1.1
\$125,000 and over	4,805	2.6	1,130	0.6
Median income \$	35,677	N/A	23,006	N/A
Average income \$	43,347	N/A	30,175	N/A
Median after-tax income \$	32,624	N/A	21,784	N/A
Average after-tax income \$	36,707	N/A	26,658	N/A

**Median Income Distribution (Before-tax Total)
for Males and Females 15 Years and Over (\$), 2010**

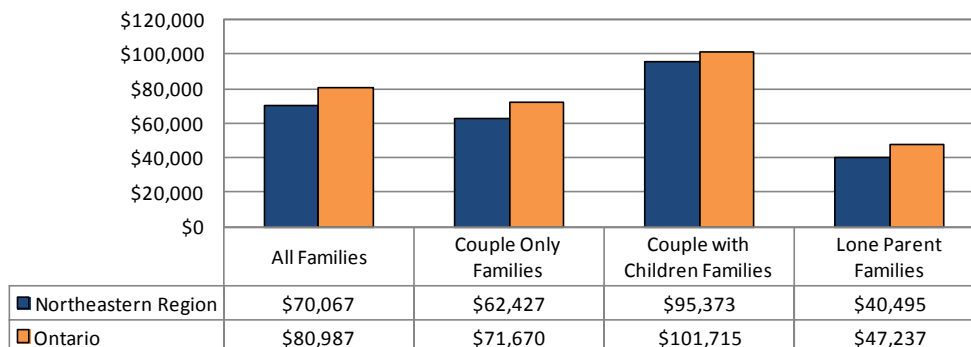


Source: Statistics Canada, special tabulations, unpublished data, 2011 National Household Survey

Economic Family Income Distribution, 2010

All Families		
	Northeastern Region	Ontario
Total economic families	136,895	3,528,375
Median family income \$	70,067	80,987
Average family income \$	82,039	100,152
Median after-tax family income \$	62,591	71,128
Average after-tax family income \$	70,425	83,322
Couple Only Families		
	Northeastern Region	Ontario
Total economic families	62,980	1,197,250
Median family income \$	62,427	71,670
Average family income \$	73,536	89,678
Median after-tax family income \$	56,016	63,402
Average after-tax family income \$	63,255	74,551
Couple with Children Families		
	Northeastern Region	Ontario
Total economic families	51,615	1,689,180
Median family income \$	95,373	101,715
Average family income \$	104,571	121,285
Median after-tax family income \$	82,637	87,820
Average after-tax family income \$	88,719	99,843
Lone Parent Families		
	Northeastern Region	Ontario
Total economic families	18,415	520,715
Median family income \$	40,495	47,237
Average family income \$	49,257	58,622
Median after-tax family income \$	39,147	44,398
Average after-tax family income \$	44,416	51,624

Median Income Distribution (Before-tax) by Economic Family Type (\$), 2010



Source: Statistics Canada, special tabulations, unpublished data, 2011 National Household Survey

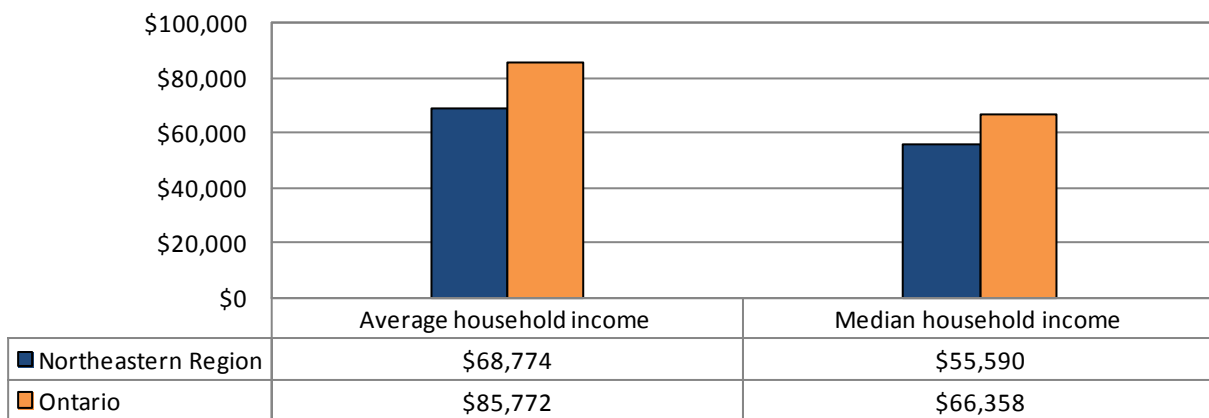
Prevalence of Low Income, 2010 - Northeastern Region				
Population in private households for income status				
	Male		Female	
	Number	%	Number	%
Total	216,020	100.0	219,880	100.0
Less than 18 years	42,445	19.6	38,725	17.6
Less than 6 years	12,485	29.4	11,695	30.2
18 to 64 years	134,575	62.3	138,500	63.0
65 years and over	39,000	18.1	42,660	19.4
In low income in 2010 based on after-tax low-income measure (LIM-AT)				
	Male		Female	
	Number	%	Number	%
Total	27,275	100.0	33,190	100.0
Less than 18 years	7,330	26.9	7,325	22.1
Less than 6 years	2,545	34.7	2,400	32.8
18 to 64 years	17,685	64.8	21,115	63.6
65 years and over	2,260	8.3	4,750	14.3
Prevalence of low income in 2010 based on after-tax low income measure %				
	Male		Female	
	Number	%	Number	%
Total		12.6		15.1
Less than 18 years		17.3		18.9
Less than 6 years		20.4		20.5
18 to 64 years		13.1		15.2
65 years and over		5.8		11.1

Source: Statistics Canada, special tabulations, unpublished data, 2011 National Household Survey.

**Household Income Distribution (Before-tax Total Income)
for All Private Households, 2010**

	Northeastern Region		Ontario	
	Number	%	Number	%
Total number of households	195,710	100.0	4,886,655	100.0
Under \$5,000	4,065	2.1	123,780	2.5
\$5,000 to \$9,999	3,325	1.7	78,000	1.6
\$10,000 to \$14,999	7,395	3.8	143,390	2.9
\$15,000 to \$19,999	11,630	5.9	211,140	4.3
\$20,000 to \$29,999	20,535	10.5	405,725	8.3
\$30,000 to \$39,999	21,220	10.8	425,410	8.7
\$40,000 to \$49,999	19,065	9.7	425,720	8.7
\$50,000 to \$59,999	17,560	9.0	398,700	8.2
\$60,000 to \$79,999	28,320	14.5	680,850	13.9
\$80,000 to \$99,999	20,955	10.7	552,660	11.3
\$100,000 to \$124,999	17,190	8.8	497,970	10.2
\$125,000 to \$149,999	10,655	5.4	331,460	6.8
\$150,000 and over	13,795	7.0	611,840	12.5
Median household total income \$	55,590	N/A	66,358	N/A
Average household total income \$	68,774	N/A	85,772	N/A
Median after-tax household income \$	50,220	N/A	58,717	N/A
Average after-tax household income \$	59,267	N/A	71,523	N/A

**Household Income Distribution (Before-tax) for
All Private Households (\$), 2010**



Source: Statistics Canada, special tabulations, unpublished data, 2011 National Household Survey.

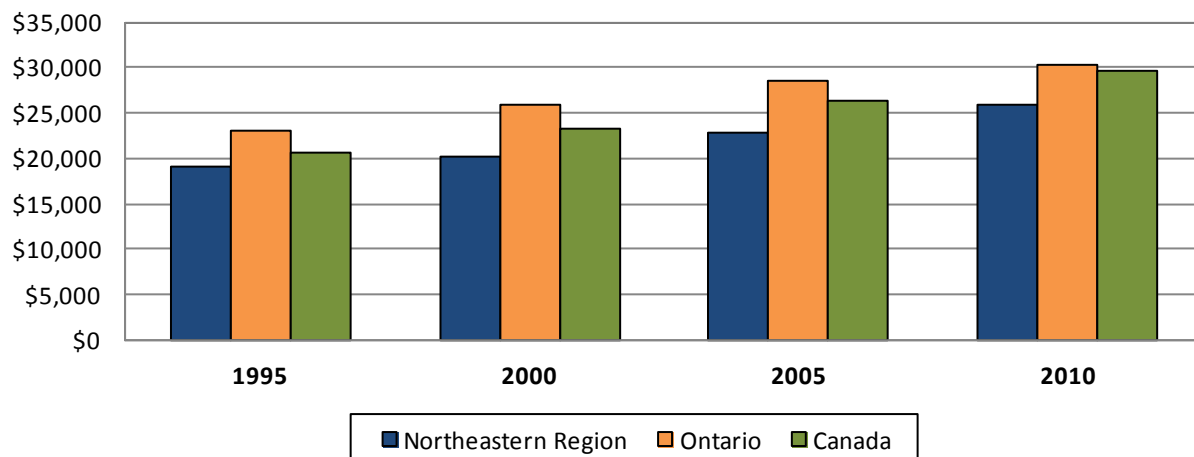
Median Employment Income for Individuals (\$)

	1995	2000	2005	2010
Northeastern Region	19,100	20,200	22,850	25,930
Ontario	23,000	26,000	28,600	30,390
Canada	20,600	23,200	26,300	29,730

Median Employment Income for Individuals, Index (1995=100)

	1995	2000	2005	2010
Northeastern Region	100.0	105.8	105.8	135.8
Ontario	100.0	113.0	124.3	132.1
Canada	100.0	112.6	127.7	144.3

Median Employment Income for Individuals



Source: Statistics Canada, Income Statistics Division, Labour Profiles, 71C0018

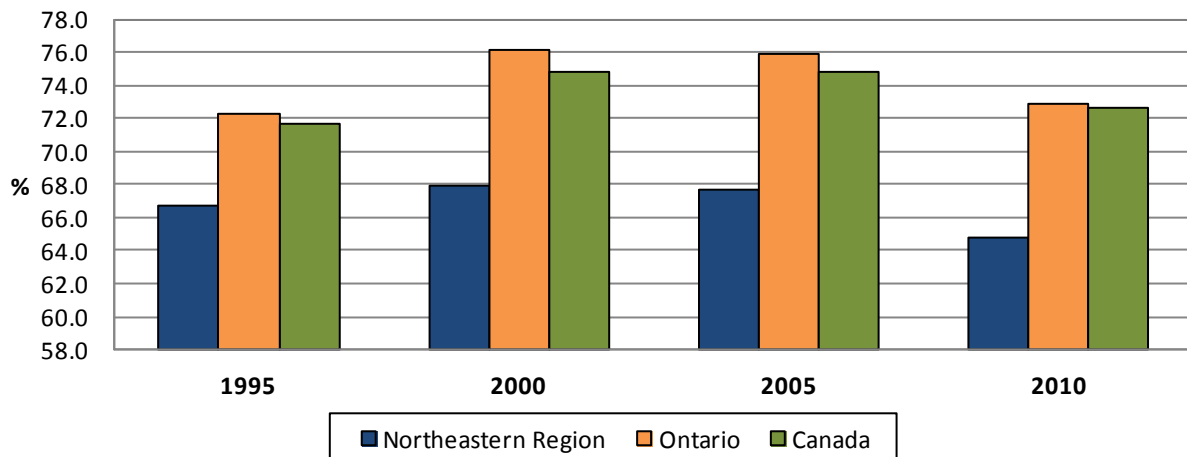
Employment Income as a Percentage of Total Income (%)

	1995	2000	2005	2010
Northeastern Region	66.7	67.9	67.7	64.8
Ontario	72.3	76.1	75.9	72.8
Canada	71.7	74.8	74.9	72.7

Employment Income as a Percentage of Total Income, Index (1995=100)

	1995	2000	2005	2010
Northeastern Region	100.0	101.8	101.4	97.1
Ontario	100.0	105.2	105.0	100.7
Canada	100.0	104.3	104.4	101.4

Employment Income as a Percentage of Total Income



Source: Statistics Canada, Income Statistics Division, Labour Profiles, 71C0018

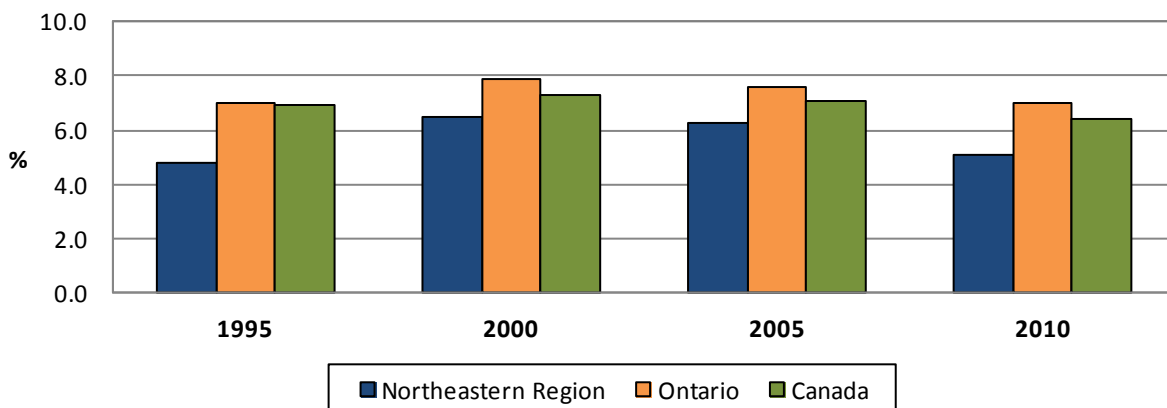
Self Employment Income as a Percentage of Employment Income (%)

	1995	2000	2005	2010
Northeastern Region	4.8	6.5	6.2	5.1
Ontario	7.0	7.9	7.6	7.0
Canada	6.9	7.3	7.1	6.4

Self Employment Income as a Percentage of Employment Income, Index (1995=100)

	1995	2000	2005	2010
Northeastern Region	100.0	135.2	129.5	105.4
Ontario	100.0	113.4	108.6	100.4
Canada	100.0	105.3	101.6	92.1

Self Employment Income as a Percentage of Employment Income



Source: Statistics Canada, Income Statistics Division, Labour Profiles, 71C0018

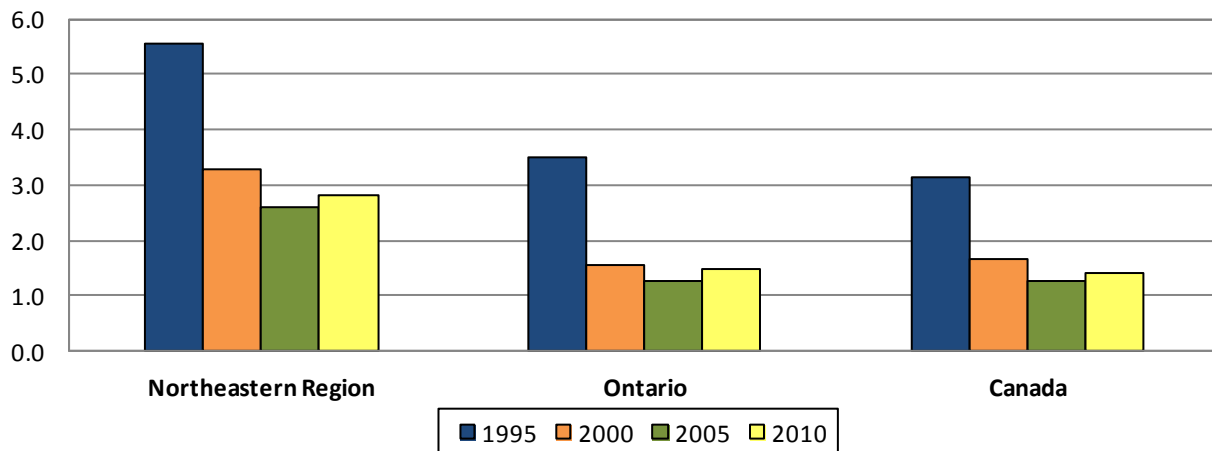
Number and Economic Dependency Ratio: Social Assistance

	Northeastern Region		Ontario		Canada	
	Number	EDR	Number	EDR	Number	EDR
1995	44,060	5.6	752,460	3.5	1,961,310	3.1
2000	31,670	3.3	512,270	1.5	1,532,450	1.7
2005	27,290	2.6	495,640	1.3	1,356,750	1.3
2010	30,370	2.8	606,390	1.5	1,508,550	1.4

Economic Dependency Ratio: Social Assistance, Index (1995=100)

	1995	2000	2005	2010
Northeastern Region	100.0	58.9	46.8	50.5
Ontario	100.0	44.1	35.8	43.0
Canada	100.0	53.4	40.6	44.7

Economic Dependency Ratio: Social Assistance

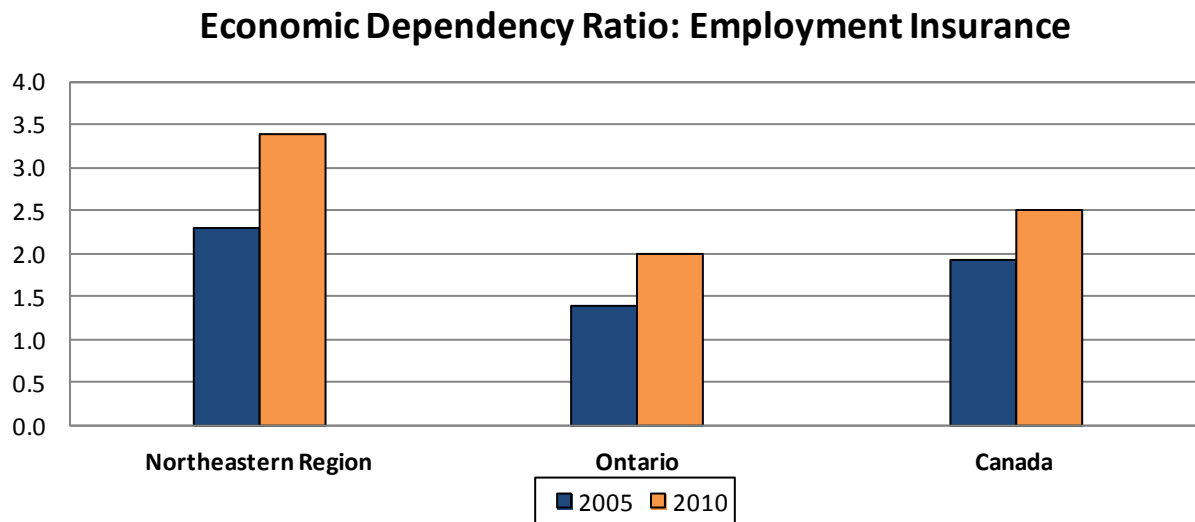


The *Economic Dependency Ratio: Social Assistance* is the amount of social assistance dollars received as benefits in a given area per \$100 of employment income for the same area.

Source: Statistics Canada, Income Statistics Division, Economic Dependency Profiles, 13C0017

Number and Economic Dependency Ratio: Employment Insurance				
	2005		2010	
	Number	EDR	Number	EDR
Northeastern Region	35,230	2.3	44,200	3.4
Ontario	678,240	1.4	898,600	2.0
Canada	2,296,870	1.9	2,800,000	2.5

Economic Dependency Ratio: Employment Insurance, Index (2005=100)		
	2005	2010
Northeastern Region	100.0	147.8
Ontario	100.0	144.9
Canada	100.0	129.5



The *Economic Dependency Ratio: Employment Insurance* is the amount of employment insurance dollars received as benefits in a given area per \$100 of employment income for the same area.

Source: Statistics Canada, Income Statistics Division, Economic Dependency Profiles, 13C0017

Location Counts for Total Business Locations, December 2012 - Top 10 Industries

Industries - NAICS 2012	Northeastern Region		Ontario	
	Number	%	Number	%
Total	28,585	100.0	910,821	100.0
23 - Construction	4,208	14.7	101,804	11.2
44-45 - Retail trade	3,611	12.6	82,631	9.1
53 - Real estate and rental and leasing	2,998	10.5	105,961	11.6
81 - Other services (except public administration)	2,426	8.5	68,758	7.5
54 - Professional, scientific and technical services	2,121	7.4	136,505	15.0
72 - Accommodation and food services	2,098	7.3	35,882	3.9
62 - Health care and social assistance	1,761	6.2	50,298	5.5
48-49 - Transportation and warehousing	1,515	5.3	48,443	5.3
11 - Agriculture, forestry, fishing and hunting	1,455	5.1	37,800	4.2
52 - Finance and insurance	1,353	4.7	55,262	6.1
All other industries	5,039	17.6	187,477	20.6

Location Counts for Small Business Locations, December 2012 - Top 10 Industries

Industries - NAICS 2012	Northeastern Region		Ontario	
	Number	%	Number	%
Total	27,909	100.0	890,507	100.0
23 - Construction	4,161	14.9	100,774	11.3
44-45 - Retail trade	3,498	12.5	79,529	8.9
53 - Real estate and rental and leasing	2,991	10.7	105,577	11.9
81 - Other services (except public administration)	2,409	8.6	68,214	7.7
54 - Professional, scientific and technical services	2,115	7.6	135,414	15.2
72 - Accommodation and food services	2,024	7.3	33,645	3.8
62 - Health care and social assistance	1,649	5.9	48,494	5.4
48-49 - Transportation and warehousing	1,470	5.3	47,611	5.3
11 - Agriculture, forestry, fishing and hunting	1,444	5.2	37,560	4.2
52 - Finance and insurance	1,346	4.8	54,471	6.1
All other industries	4,802	17.2	179,218	20.1

"Small" business locations include all active locations of indeterminate size along with all active locations with 1-49 employees. The locations in the "Indeterminate" category do not maintain an employee payroll, but may have a workforce which consists of contracted workers, family members or business owners.

Source: Statistics Canada, Business Register Division, Business Register Tabulations, 61C0024

Location Counts for Medium Business Locations, December 2012 - Top 10 Industries

Industries - NAICS 2012	Northeastern Region		Ontario	
	Number	%	Number	%
Total	566	100.0	16,586	100.0
44-45 - Retail trade	109	19.3	2,747	16.6
62 - Health care and social assistance	89	15.7	1,381	8.3
72 - Accommodation and food services	70	12.4	2,113	12.7
31-33 - Manufacturing	61	10.8	2,347	14.2
91 - Public administration	47	8.3	336	2.0
23 - Construction	44	7.8	904	5.5
48-49 - Transportation and warehousing	33	5.8	654	3.9
56 - Administrative and support, waste management and remediation services	19	3.4	1,023	6.2
81 - Other services (except public administration)	17	3.0	470	2.8
71 - Arts entertainment and recreation	11	1.9	375	2.3
All other industries	566	100.0	4,236	25.5

The "Medium" business locations include all active locations with 50-199 employees.

Location Counts for Large Business Locations, December 2012 - Top 10 Industries

Industries - NAICS 2012	Northeastern Region		Ontario	
	Number	%	Number	%
Total	110	100.0	3,728	100.0
62 - Health care and social assistance	23	20.9	423	11.3
61 - Educational services	16	14.5	159	4.3
31-33 - Manufacturing	14	12.7	645	17.3
21 - Mining, quarrying, and oil and gas extraction	13	11.8	27	0.7
48-49 - Transportation and warehousing	12	10.9	178	4.8
56 - Administrative and support, waste management and remediation services	8	7.3	314	8.4
91 - Public administration	8	7.3	250	6.7
44-45 - Retail trade	4	3.6	355	9.5
72 - Accommodation and food services	4	3.6	124	3.3
23 - Construction	3	2.7	126	3.4
All other industries	5	4.5	1,127	30.2

The "Large" business locations include all active locations with 200+ employees.

Source: Statistics Canada, Business Register Division, Business Register Tabulations, 61C0024

APPENDIX A

Census

The census is Canada's largest and most comprehensive data source. The Census of Population collects demographic and linguistic information on every man, woman and child living in Canada. The last census took place in May 2011.

The census is the main source of data available in a standardized format for small areas. It provides nationally comparable data that can be cross-classified to show details. It is also the main body of comprehensive statistical data at the subprovincial level on Canada's population.

The Census of Population is taken to meet statutory requirements. For example, population counts are used to realign the boundaries of federal electoral districts, to calculate transfer payments between levels of government, and to support a variety of programs.

The data are needed by both the public and private sectors to support decision-making in many areas. For example:

- to plan community services such as schools, day care, police services and fire protection
- to forecast consumer demand
- to conduct market research studies.

For 2011, Statistics Canada did not use a mandatory long-form questionnaire as part of the census. Information previously collected by the mandatory long-form census questionnaire was collected as part of the new voluntary National Household Survey (NHS).

The 2011 Census questionnaire consisted of the same eight questions that appeared on the 2006 Census short-form questionnaire, with the addition of two questions on language.

Please visit the following link for more information about the Census of Population:

<http://www12.statcan.gc.ca/census-recensement/2011/ref/index-eng.cfm>

Census Glossary

Age:

Refers to the age at last birthday as of the census reference date, May 11, 2011.

Census Family:

Refers to a married couple (with or without children of either and/or both spouses), a common-law couple (with or without children of either and/or both partners) or a lone parent of any marital status, with at least one child. A couple may be of opposite sex or same sex.

Census Family Structure:

Refers to the classification of census families into married couples (with or without children of either and/or both spouses), common-law couples (with or without children of either and/or both partners), and lone-parent families by sex of parent.

First Official Language Spoken:

This variable was derived within the framework of the application of the *Official Languages Act*. This derivation method is described in the regulations concerning the use of official languages for the provision of public services. It takes into account, first, the knowledge of the two official languages, second, the mother tongue, and third, the home language.

Generation Status:

Generation status refers to whether or not the person or the person's parents were born in Canada. It identifies persons as being first generation, second generation or third generation or more.

1st Generation: Persons born outside Canada.

2nd Generation: Persons born inside Canada with at least one parent born outside Canada.

3rd or more Generation: Persons born inside Canada with both parents born inside Canada.

Labour Force Activity (2006):

Refers to the labour market activity of the population 15 years of age and over in the week (Sunday to Saturday) prior to Census Day (May 16, 2006). Respondents were classified as Employed, Unemployed, or Not in the labour force.

Home Language:

Refers to the language spoken most often or on a regular basis at home by the individual on May 10, 2011.

Mother Tongue:

Refers to the first language learned at home in childhood and still understood by the individual on May 10, 2011.

APPENDIX B

National Household Survey

The 2011 National Household Survey (NHS) provides information about the demographic, social and economic characteristics of Canadians and the dwellings in which they live. The objective of the NHS is to provide data for small geographic areas and small population groups.

Between May and August 2011, Statistics Canada conducted the National Household Survey (NHS) for the first time. This voluntary, self-administered survey was introduced as a replacement for the long census questionnaire, more widely known as Census Form 2B.

Please visit the following link for more information about the National Household Survey:

<http://www12.statcan.gc.ca/nhs-enm/2011/ref/index-eng.cfm>

Global Non-Response Rate

The global non-response rate (GNR) is an indicator of data quality which combines complete non-response and partial non-response to the survey. A smaller GNR indicates a lower risk of non-response bias, i.e., a lower risk of lack of accuracy. Global non-response rates are determined for each of the NHS geographic areas.

National Household Survey Glossary

Aboriginal Identity:

Refers to those persons who reported identifying with at least one Aboriginal group, that is, North American Indian, Métis or Inuit, and/or those who reported being a Treaty Indian or a Registered Indian, as defined by the *Indian Act* of Canada, and/or those who reported they were members of an Indian band or First Nation.

Class of Worker:

Class of worker refers to whether an employed person is an employee or is self-employed. The self-employed include persons with or without a business, as well as unpaid family workers.

Economic Family:

Refers to a group of two or more persons who live in the same dwelling and are related to each other by blood, marriage, common-law, adoption or a foster relationship. A couple may be of opposite or same sex.

Economic Family Total Income:

The total income of an economic family is the sum of the total incomes of all members of that family.

Ethnic Origin:

Refers to the ethnic or cultural origins of the respondent's ancestors. An ancestor is usually more distant than a grandparent.

Full-time or part-time weeks worked in 2010:

Refers to persons who worked for pay or in self-employment in 2010. These persons were asked to report whether the weeks they worked in 2010 were full-time weeks (30 hours or more per week) or not, on the basis of all jobs held.

Generation Status:

Generation status refers to whether or not the person or the person's parents were born in Canada. It identifies persons as being first generation, second generation or third generation or more.

1st Generation: Persons born outside Canada.

2nd Generation: Persons born inside Canada with at least one parent born outside Canada.

3rd or more Generation: Persons born inside Canada with both parents born inside Canada.

Highest Certificate, Diploma or Degree:

Information indicating the person's most advanced certificate, diploma or degree. This is a derived variable obtained from the educational qualifications questions, which asked for all certificates, diplomas and degrees to be reported. The general hierarchy used in deriving this variable (high school graduation, trades, college, university) is loosely tied to the 'in-class' duration of the various types of education.

Household:

Refers to a person or a group of persons (other than foreign residents) who occupy the same dwelling and do not have a usual place of residence elsewhere in Canada. It may consist of a family group (census family) with or without other persons, of two or more families sharing a dwelling, of a group of unrelated persons, or of one person living alone.

Household Total Income:

The total income of a household is the sum of the total incomes of all members of that household.

Household Size:

Number of persons occupying a private dwelling.

Household Type:

Refers to the basic division of private households into family and non-family households. Family household refers to a household that contains at least one census family, that is, a married couple with or without children, or a couple living common-law with or without children, or a lone parent living with one or more children (lone-parent family).

One-family household refers to a single census family (with or without other persons) that occupies a private dwelling. Multiple-family household refers to a household in which two or more census families (with or without additional persons) occupy the same private dwelling. Non-family household refers to either one person living alone in a private dwelling or to a group of two or more people who share a private dwelling, but who do not constitute a census family.

Industry (based on the North American Industry Classification System [NAICS] 2007):

Refers to the general nature of the business carried out in the establishment where the person worked.

Labour Force:

Refers to persons who, during the week of Sunday, May 1 to Saturday, May 7, 2011, were either employed or unemployed.

Labour force = Employed + Unemployed

Early enumeration was conducted in remote, isolated parts of the provinces and territories in February, March and April 2011. When enumeration has taken place before May 2011, the reference date used is the date on which the household was enumerated.

Labour Force Status:

Refers to whether a person aged 15 years and over living in a private household was employed, unemployed or not in the labour force during the week of Sunday, May 1 to Saturday, May 7, 2011.

Early enumeration was conducted in remote, isolated parts of the provinces and territories in February, March and April 2011. When enumeration has taken place before May 2011, the reference date used is the date on which the household was enumerated.

Major Field of Study:

Main subject area of the person's highest postsecondary certificate, diploma or degree classified according to the Classification of Instructional Programs (CIP) Canada 2011.

Occupation (based on the National Occupational Classification [NOC] 2011):

Refers to the kind of work performed by persons during the week of Sunday, May 1 to Saturday, May 7, 2011, as determined by their kind of work and the description of the main activities in their job.

Place of Birth:

Refers to the province or territory where the respondent was born, for respondents who were born in Canada, or to the country where the respondent was born, for respondents born outside Canada.

Place of Work Status:

Classification of respondents 15 years of age and over in private households who worked at some time since January 1, 2010 according to whether they worked at home, worked outside Canada, had no fixed workplace address, or worked at a specific address (usual place of work).

Prevalence of Low Income:

Proportion or percentage of persons, economic families, persons not in an economic family aged 15 years or over or households in low income according to one of the low-income lines.

Income status can be measured in several different ways in household surveys. For the standard products of the National Household Survey, the line chosen is a relative measure: the after-tax low-income measure (LIM-AT).

For this measure, the income used is after-tax income of households. There are no regional variations to account for prices or cost of living differences: all applicable households in Canada face the same line adjusted for household size. This line is set at half the median of adjusted household after-tax income. To account for potential economies of scale, the income of households with more than one member is divided by the square root of the size of the household.

All household members are considered to share the household income and are attributed the same income status.

Recent Immigrants:

Recent immigrants are immigrants who landed in Canada between January 1, 2006 and May 10, 2011.

Total Income:

Total of income from all sources, including employment income, income from government programs, pension income, investment income and any other money income.

Visible Minority Group:

Refers to the visible minority group to which the respondent belongs. The Employment Equity Act defines visible minorities as 'persons, other than Aboriginal peoples, who are non-Caucasian in race or non-white in colour'.

APPENDIX C

Small Area and Administrative Data (SAAD)

From the income tax forms submitted each year by Canadians, the Annual Estimates for Census Families and Individuals (T1 Family File) produces a wealth of economic and demographic information for use by both the private and public sectors. Close to 26 million records were processed in 2011 to provide the most detailed and accurate data possible. In fact, the information represents nearly 95% of the Canadian population.

Glossary:

Economic Dependency Ratio (EDR):

For a given area, the EDR is the ratio of transfer dollars to every \$100 of total employment income. For example, where a table shows an EDR of 12.1, it means that \$12.10 was received in transfer payments for every \$100 of employment income for that area.

Employment Income:

Employment income includes wages and salaries, commissions from employment, training allowances, tips and gratuities, self-employment income (net income from business, profession, farming, fishing and commissions) and Indian employment income (new in 1999).

Employment Insurance (EI) *Previously Unemployment Insurance (UI)*

Comprises all types of benefits paid to individuals under this program, regardless of reason, including regular benefits for unemployment, fishing, job creation, maternity, parental/adoption, retirement, self-employment, sickness, training and work sharing.

Median:

Is the middle number in a group of numbers. Where a median income, for example, is given as \$26,000, it means that exactly half of the incomes reported are greater than or equal to \$26,000, and that the other half are less than or equal to the median amount. Median incomes in the data tables are rounded to the nearest hundred dollars and starting with 2007 to the nearest ten dollars. Zero values are not included in the calculation of medians for individuals, but are included in the calculation of medians for families.

Self-Employment Income:

Is the net income from business, a profession, commissions, farming and fishing.

Social Assistance

Includes payments made in the year on the basis of a means, needs or income test (whether made by an organized charity or under a government program). The value is reported on line 145 of the personal income tax return.

Please visit the following link for more information about this data set and definitions:

<http://www.statcan.ca/bsolc/english/bsolc?catno=17-507-X>

APPENDIX D

Canadian Business Patterns

Canadian Business Patterns provides accurate and complete counts of active locations by employment size range by industry classification. These counts can be used to study economic activity and market potential in the CFDC.

The top 10 NAICS categories are provided. Data is provided for the total active statistical locations as well as small, medium and large active statistical locations. Counts are also provided for locations where the number of employees is indeterminate.

Statistical Location

The location is an operating entity, specifically a production entity which:

- (a) Conducts economic activity at or from a single physical location or group of locations;
- (b) Resides within the smallest standardized geographical area;
- (c) Is able to provide employment data at a minimum.

Please visit the following link for more information about this data source:

http://www23.statcan.gc.ca/imdb/p2SV.pl?Function=getSurvey&SDDS=1105&Item_Id=51930&lang=en